

# BRAUN Power Seat Base

## Installation/Service Manual

for models:

### 6-Way Power Seats

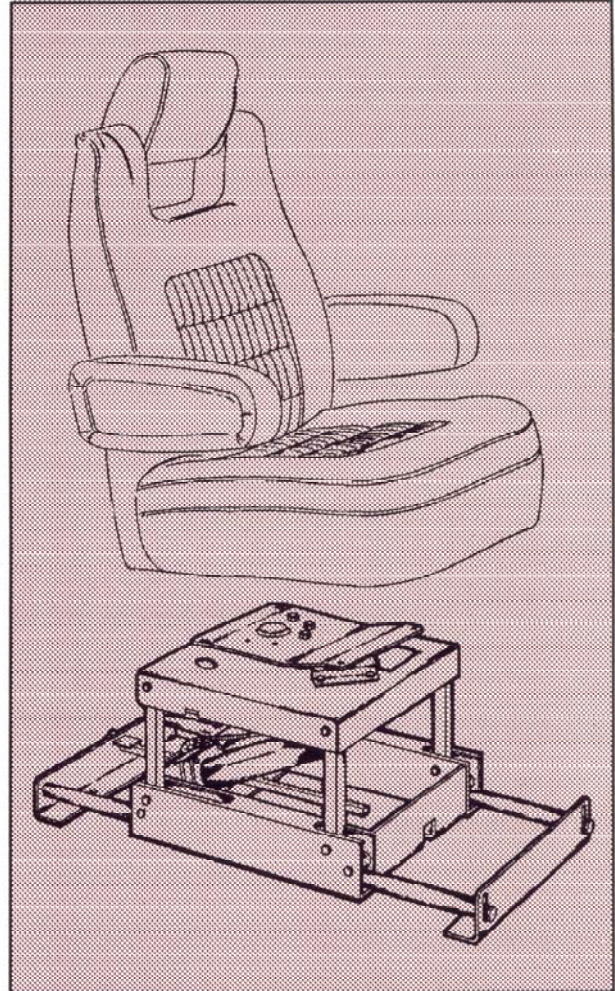
- 13085A - Long
- 16017A - Short

### 4-Way Power Seats with Manual Swivel

- 13668A - Long
- 16025A - Short

### 4-Way Power Seats

- 13667A - Long
- 16024A - Short



## CONTENTS

Specifications .....	2
Warranty/Registration Instructions .....	2
Installation Instructions .....	3
Seat Rotation Instructions for Passenger's Side Applications	
6-Way Power Seat .....	6
4-Way Power Seat with Swivel .....	7
4-Way Power Seat less Swivel .....	7
Repair Parts	
Parts List .....	8
Exploded Views	
6-Way Power Seat .....	9
4-Way Power Seat with Swivel .....	10
4-Way Power Seat less Swivel .....	11
Safety Precautions .....	Back Cover
Warranty .....	Back Cover

**Note to Installer:**  
Provide this manual  
to the consumer



1014 S. Monticello, P.O. Box 310, Winamac, IN 46996

**1-800-THE LIFT** In Indiana Call: (219) 946-6153

FAX: (219) 946-4670 TELEX: 3728944

5 Industrial Road Fairfield, NJ 07004 (201) 882-5455 FAX: (201) 882-8076	5072 113th Ave. N. Clearwater, FL 34620 (813) 573-2737 FAX: (813) 573-5069	15731 Graham St. Huntington Beach, CA 92649 (714) 891-4305 FAX: (714) 893-3061
---	---	---

15887  
July 1988

**IMPORTANT!**  
SEE INSIDE  
COVER FOR  
WARRANTY/  
REGISTRATION  
INSTRUCTIONS  
AND  
READ SAFETY  
PRECAUTIONS  
ON BACK COVER

CONFIDENTIAL PROPRIETARY INFORMATION!  
NOT TO BE COPIED OR DISCLOSED  
WITHOUT PRIOR WRITTEN PERMISSION  
OF THE BRAUN CORPORATION

## SPECIFICATIONS

- Height (Up): 14"
- Height (Down): 8-1/4"
- Length: 34-1/4" (Long) / 26-1/4" (Short)
- Width: 16"
- Power Source: 12 VDC battery with negative ground
- Length of Travel: 24" (Long) / 16" (Short)
- Swivel: 95°
- Lifting Capacity: 475 lbs. (including seat)
- Weight: 76 lbs.
- Series Code: 01

## WARRANTY/REGISTRATION INSTRUCTIONS

### Immediately upon receiving:

- Examine the unit for any visible damage. Notify the carrier at once with any claims.
- Two warranty/registration cards (shown right) are protected in plastic wrap and attached to the Installation Parts Package. One is labeled Dealer and the other is labeled Owner. The dealer must process the card labeled Dealer. The owner must fill out the card labeled Owner and mail it to The Braun Corporation. The warranty is provided on the back cover of this manual.
- The Braun Serial No./Series No. Identification decal (shown below) is affixed to the Installation Parts Package. One Braun Identification Strip (identical to the one shown above) is affixed to the rear face of the seat base directly above the gear rack. Both I.D. tags contain product identification information. Record the information in the space provided. This information **must** be provided when filing a warranty claim or ordering parts.

Model No.      Series No.      Serial No.      Date

OWNER'S WARRANTY REGISTRATION

13085A-01-0196-06/88

---

OWNER

NAME \_\_\_\_\_

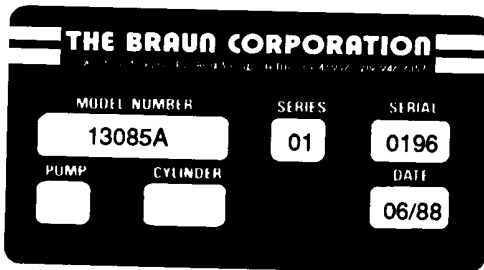
ADDRESS \_\_\_\_\_

CITY \_\_\_\_\_ STATE \_\_\_\_\_ ZIP \_\_\_\_\_

TELEPHONE \_\_\_\_\_

TO VALIDATE WARRANTY  
REGISTRATION CARDS MUST BE RETURNED TO THE BRAUN CORPORATION.

SAMPLE



SAMPLE

Model No. \_\_\_\_\_

Series No. \_\_\_\_\_

Serial No. \_\_\_\_\_

Date of Manufacture \_\_\_\_\_

**RETAIN THIS INFORMATION FOR FUTURE USE.  
HAVE THIS INFORMATION WHEN FILING  
A WARRANTY CLAIM OR ORDERING PARTS!**

**WARNING: FOR THE SAFETY OF THE USER/OPERATOR, POSITIVE SECUREMENT AND PROPER OPERATION — MAKE CERTAIN ABSOLUTELY ALL MOUNTING HARDWARE IS INSTALLED AS DESCRIBED IN THE INSTALLATION INSTRUCTIONS, (QUANTITIES AND PROCEDURES), AND PAY CLOSE ATTENTION TO ALL SAFETY PRECAUTIONS AND WARNINGS LISTED THROUGHOUT THE INSTRUCTIONS. FAILURE TO DO SO MAY RESULT IN PROPERTY DAMAGE AND/OR SERIOUS BODILY INJURY.**

## INSTALLATION INSTRUCTIONS

### Power Seat Installation Parts Package #15883A

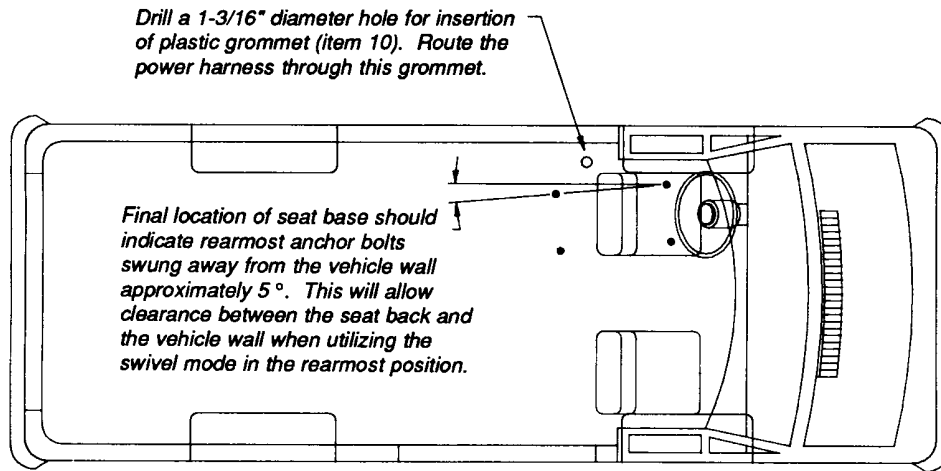
Please check the Installation Parts List to see that you have everything needed to begin. Report any missing items.

Item	Description	Quantity	Part No.
1	Harness, Battery to Circuit Breaker * Includes:	1	15882A
2	* Circuit Breaker, 30 amp.	1	10768
3	Bolt, 7/16"-20 x 2", Hex	4	77106
4	Washer, 3"	4	13342
5	Washer, 7/16", Lock	4	13843
6	Nut, 7/16"-20, Hex	4	10457
7	Screw, 1/4"-14 x 1-1/2", Self-Tap (Hex)	1	14144
8	Screw, #8-18 x 1", Self-Tap (Hex)	4	10084
9	Cable Tie, 6" Solid	6	12287
10	Grommet, Plastic	1	205-2001
*	Owner's Manual (Not shown)	1	15887

**NOTE:** Instructions applicable to driver's side. For passenger seat applications, see the appropriate seat rotation instructions. Install the seat base, (prior to seat rotation), using a mirrored image of the hole locations shown in Figure A - page 4.

- 1) Carefully remove the existing seat and seat base, (pedestal). Plug the mounting holes using 3/8" carriage bolts. **Note:** Remove any safety belt securement devices and mounting hardware attached to the seat/base assembly. Keep this equipment for reinstallation.
- 2) Remove the seat from the pedestal and use the existing seat mounting hardware to secure the seat to the power seat base plate. Tighten hardware securely.
- 3) Temporarily position the power seat base, (shipped position – "Down" and "Reversed"). Locate by visually centering the seat in alignment with the steering wheel - See Figure A. **NOTE:** Once the power is connected, it will be necessary to position the seat in the fully "Down" and "Forward" position in order to provide adequate leg room and permanently locate the seat base.
- 4) Determine the location of the power harness access hole. The recommended location is through the vehicle floor between the seat base - the vehicle wall - and approximately at the midpoint of the seat base, (just to the rear of the stepwell - clear of framing members). See Figure A. Use a 1-3/16" diameter hole saw to drill a hole to accommodate the 1" diameter plastic grommet, (item 10). **Caution:** Before drilling, check under the vehicle for obstructions such as gas lines, wires, etc. Use two (2) #8-18 x 1" self-tap screws, (item 8), to secure the grommet.
- 5) Locate the vehicle battery. Route the power harness through the grommet. Route the cable to the battery location. **Caution:** Keep the cable clear of the exhaust system, other hot areas and moving parts. Use cable ties, (item 9), to secure

## INSTALLATION INSTRUCTIONS



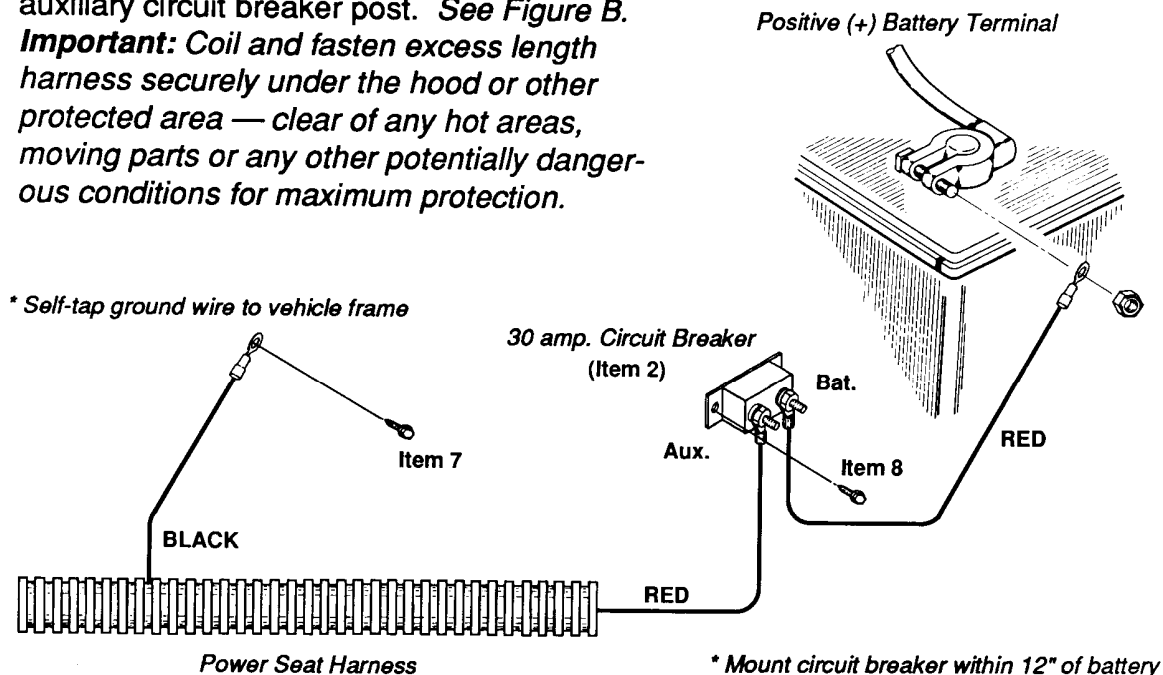
**FIGURE A**

**NOTE:** For passenger seat applications, see the appropriate Seat Rotation Instructions. Install the seat base (**prior** to seat rotation) using a mirrored image of the hole locations

the cable to the underside of the vehicle. **Note:** Complete the installation **before** securing the harness in order to have sufficient length of harness between the seat base and the access hole to allow free seat movement.

- 6) Locate the circuit breaker, (item 2), within 12" of the positive (+) battery terminal and self-tap it to the fenderwell or other appropriate mounting surface using two (2) #8-18 x 1" self-tap screws, (item 8). See Figure B.
- 7) Connect the red harness power cable to the auxiliary circuit breaker post. See Figure B. **Important:** Coil and fasten excess length harness securely under the hood or other protected area — clear of any hot areas, moving parts or any other potentially dangerous conditions for maximum protection.

**FIGURE B**

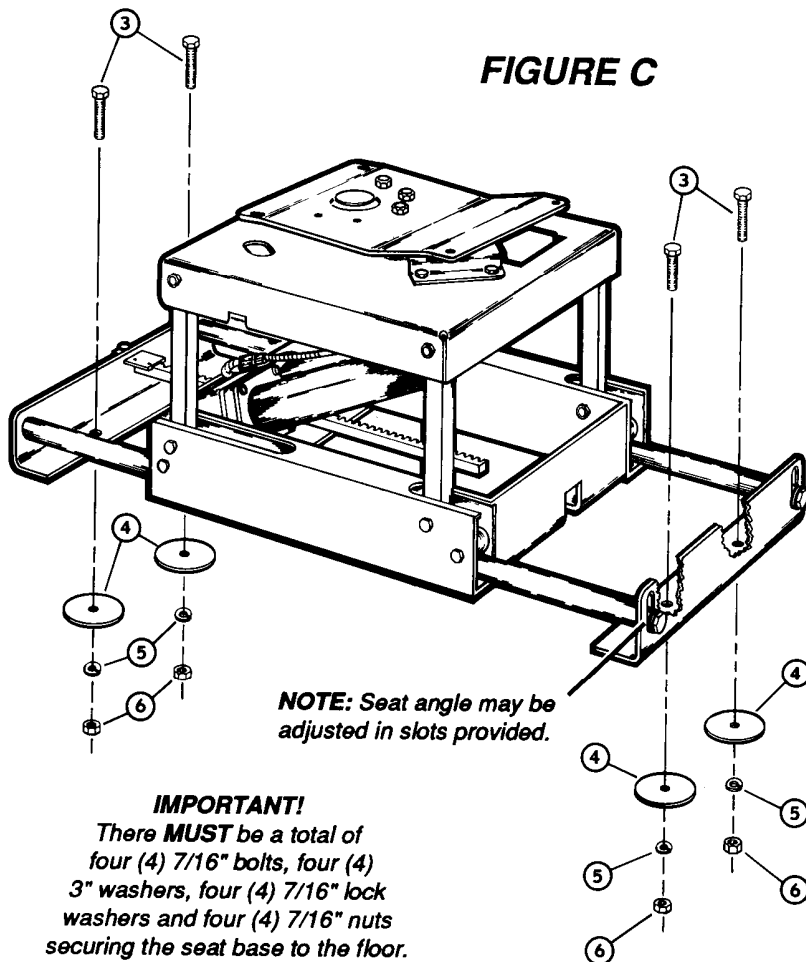


**\* Mount circuit breaker within 12" of battery**

CONFIDENTIAL PROPRIETARY INFORMATION!  
NOT TO BE COPIED OR DISCLOSED  
WITHOUT PRIOR WRITTEN PERMISSION  
OF THE BRAUN CORPORATION

## INSTALLATION INSTRUCTIONS

- 8) Locate the black ground wire. Drill a 3/16" diameter pilot hole in the vehicle frame, (below or above the floor as desired). Fasten the ground cable eyelet terminal using a 3/8" hex nut driver bit or wrench to install the 1/4"-14 x 1-1/4" self-tap screw, (item 7). See Figure B.
- 9) **Carefully** connect the opposite end of the red 18" circuit breaker lead wire to the positive (+) post of the battery. **Caution: Use extra care when making electrical connections. Doublecheck all connections to be certain they are secure and properly connected.** See Figure B.
- 10) Permanent seat base positioning can now be determined by functioning the power seat. Position the seat in the fully "Down" and "Forward" position. Align the center of the seat with the center of the steering wheel. Check for adequate leg room between the seat and the wheel. **Note: Position the power seat occupant if available. IMPORTANT!** Shift the rear of the seat base 5° toward the interior of the vehicle. See Figure A. Swivel the seat to be **certain** adequate clearance is provided. **Note: Horizontal action may be adjusted in the slots provided.** See Figure C.



- 11) Place the seat in the midway position. Drill four (4) 1/2" diameter holes through the vehicle floor in alignment with the holes provided in the front and rear mounting brackets. **Caution: Before drilling, check under the vehicle for obstructions such as gas lines, wires, etc.**

From above, insert one (1) 7/16"-20 x 2" bolt, (item 3), into each of the four holes. Secure **each** bolt below the floor by placing one (1) 3" diameter washer, (item 4), one (1) 7/16" lock washer, (item 5), and one (1) 7/16" nut, (item 6). Tighten securely. See Figure C. There **must** be a total of four (4) 7/16" bolts, four (4) 3" washers, four (4) 7/16" lock washers and four (4) 7/16" nuts securing the seat base to the floor.

## **SEAT ROTATION INSTRUCTIONS for Passenger Side Applications**

### **6-Way Power Seat**

*\* Refer to exploded view on page 9.*

- 1) Install the power seat according to the *Power Seat Base Installation Instructions* for driver's side applications. **NOTE:** *Be certain to rotate the rear of the seat base 5° as outlined in Step 10. Refer to Figure A, (mirrored image).*
- 2) Remove the 1/4" diameter cotter pin, (item 38), from the power seat axle and remove the 1-1/2" diameter washer, (item 39).
- 3) Rotate the seat plate weldment, (item 36), approximately 45° clockwise so that it is at an angle to the upper carriage weldment, (item 29).
- 4) Lift the seat plate weldment out of the upper carriage weldment. **NOTE:** *This operation may require the assistance of a pry bar to provide added leverage to dislodge the axle from the upper carriage.*
- 5) Make special note of the bolting arrangement between the seat plate weldment and the gear plate weldment, (item 37). Unbolt the gear plate weldment from the seat plate weldment.
- 6) From the axle side of the seat plate weldment, rotate the gear plate weldment 90° counterclockwise and rebolt it to the seat plate weldment through the three (3) previously *unused* bolt holes.
- 7) Reinsert the seat plate weldment axle into the upper carriage weldment. **NOTE:** *Take special care to engage the teeth of the gear plate with the teeth of the motor mounted gear.*
- 8) Reinstall the 1-1/2" diameter washer on the power seat axle and reinsert the 1/4" diameter cotter pin in the hole provided in the end of the axle. **Carefully** bend the ends of the cotter pin around the axle so as **NOT** to snag electrical wires while the power seat is in operation.

**WARNING! IN THE EVENT OF A DAMAGED COTTER PIN - DO NOT REPLACE THE COTTER WITH ANYTHING OTHER THAN A 1/4" DIAMETER COTTER PIN. FAILURE TO DO SO COULD RESULT IN SERIOUS BODILY INJURY AND/OR PROPERTY DAMAGE.**

- 9) Check the operation of the power seat to ensure proper seat rotation.

## **SEAT ROTATION INSTRUCTIONS for Passenger Side Applications**

### **4-Way Power Seat with Swivel**

*\* Refer to exploded view on page 10.*

- 1) Complete steps 1 and 2 as detailed on page 6.
  - 2) Lift the seat plate weldment, (item 36), out of the upper carriage weldment, (item 29). **NOTE:** *This operation may require the assistance of a pry bar to provide added leverage to dislodge the axle from the upper carriage. Also, use **caution** when removing the seat plate weldment — as this dislodges the spring loaded latch handle, (item 48), from the latch plate, (item 45), and causes the handle to snap back.*
  - 3) Remove the 3/8"-16 x 1-1/4" bolts, (item 47), from the latch plate. Be careful NOT to lose either of the two (2) tubing spacers, (item 46), located beneath the latch plate.
  - 4) Turn the latch plate over and rebolt to the upper carriage weldment. Make sure to position the two (2) tubing spacers when reattaching. **NOTE:** *The notch in the latch plate should be pointing in the general direction of the largest diameter hole in the surface of the upper carriage weldment.*
  - 5) Reinsert the power seat plate weldment axle into the upper carriage weldment. **NOTE:** *Take special care to engage the latch handle with the notch in the latch plate.*
  - 6) Reinstall the 1-1/2" diameter washer on the power seat axle and reinsert the 1/4" diameter cotter pin in the hole provided in the end of the axle. Bend the ends of the cotter pin around the axle so as NOT to snag electrical wires while the power seat is in operation.
- IMPORTANT! SEE WARNING ON PREVIOUS PAGE.**
- 8) Check the operation of the power seat to ensure proper seat rotation.

### **4-Way Power Seat less Swivel**

*\* Refer to exploded view on page 11.*

- 1) Complete step 1 as detailed on page 6. Remove the 3/8"-16 x 2" bolt, (item 54), from the seat plate weldment, (item 36).
- 2) Insert the bolt in the mounting hole located directly adjacent to the original hole, (*See exploded view - page 11*). Be certain to position the tubing spacer, (item 55), between the seat plate and the upper carriage, (item 29). Resecure the bolt with the 3/8" lock nut, (item 20). Tighten securely.

CONFIDENTIAL PROPRIETARY INFORMATION!  
 NOT TO BE COPIED OR DISCLOSED  
 WITHOUT PRIOR WRITTEN PERMISSION  
 OF THE BRAUN CORPORATION

## REPAIR PARTS

Part numbers listed according to  
 Power Seat Base model number

		6-Way Power Seat Power Swivel		4-Way Power Seat with Swivel		4-Way Power Seat less Swivel	
* For corresponding Exploded View:		see page 9		see page 10		see page 11	
Item	Description	13085A	16017A	13668A	16025A	13667A	16024A
1	"Front" Mounting Bracket	15017	15017	15017	15017	15017	15017
2	"Rear" Mounting Bracket	15018	15018	15018	15018	15018	15018
3	Rod, Aluminum	15019	15919	15019	15919	15019	15919
4	Collar, 1" I.D.	15598	15598	15598	15598	15598	15598
5	Bolt, 1/2"-13 x 1-1/4", Hex	14214	14214	14214	14214	14214	14214
6	Washer, 1/2" x 7/8"	12621	12621	12621	12621	12621	12621
7	Washer, 1/2", Lock	10070	10070	10070	10070	10070	10070
8	Lower Carriage	15028A	15028A	15028A	15028A	15028A	15028A
9	Bearing, Flat, U.H.M.W.	205-1760	205-1760	205-1760	205-1760	205-1760	205-1760
10	Roller, Plastic, Seat Guide	15005	15005	15005	15005	15005	15005
11	Bolt, 5/16"-18 x 2", Hex	16056	16056	16056	16056	16056	16056
12	Nut, 5/16"-18, Hex Lock	11387	11387	11387	11387	11387	11387
13	Gear Rack	15022A	15022A	15022A	15022A	15022A	15022A
14	Stop Block	15001	15001	15001	15001	15001	15001
15	Bolt, 1/4"-20 x 3/4", Hex	10970	10970	10970	10970	10970	10970
16	Nut, 1/4"-20, Hex Lock	10775	10775	10775	10775	10775	10775
17	Bearing, 3/8" x 1-1/8"	12480	12480	12480	12480	12480	12480
18	Bolt, 3/8"-16 x 1", Hex	10025	10025	10025	10025	10025	10025
19	Washer, 3/8", Lock	10069	10069	10069	10069	10069	10069
20	Nut, 3/8"-16, Hex Lock	13617	13617	13617	13617	13617	13617
21	Motor	14444	14444	14444	14444	14444	14444
22	Bolt, 1/4"-20 x 1"	10001	10001	10001	10001	10001	10001
23	Washer, 1/4", Lock	10067	10067	10067	10067	10067	10067
24	"Front" Arm Weldment	15863A	15863A	15863A	15863A	15863A	15863A
25	"Rear" Arm Weldment	15864A	15864A	15864A	15864A	15864A	15864A
26	Actuator	14992	14992	14992	14992	14992	14992
27	Bolt, 1/2"-13 x 2", Hex	10039	10039	10039	10039	10039	10039
28	Nut, 1/2"-13, Hex Lock	13157	13157	13157	13157	13157	13157
29	Upper Carriage	15029A	15029A	15029A	15029A	15029A	15029A
30	Motor Mounting Bracket	15002	15002				
31	Bolt, 3/8"-16 x 1/2" Hex	10024	10024				
32	Bearing, Fiberglass	15026	15026	15026	15026	15026	15026
33	Rivet, Pop, 3/16" dia. x 1/4"	11513	11513	11513	11513	11513	11513
34	Axle, Threaded Each End	15875	15875	15875	15875	15875	15875
35	Bolt, 5/16"-18 x 1-1/2"	10014	10014	10014	10014	10014	10014
36	Plate with Axle	15879A	15879A	15879A	15879A	15879A	15879A
37	Gear Plate with Studs	16095A	16095A				
38	Cotter Pin, 1/4" x 2"	15886	15886	15886	15886	15886	15886
39	Washer, 1-1/2" x 1" x .12"	205-1792	205-1792	205-1792	205-1792	205-1792	205-1792
40	Control Box with Harness	15880A	15880A	16120A	16120A	16120A	16120A
41	Switch, P/S-P/W	10558	10558	10558	10558	10558	10558
42	Switch, SPDT	15362	15362	15362	15362	15362	15362
43	Circuit Breaker, 30 amp.	10768	10768	10768	10768	10768	10768
44	Bushing, Grommet	14874	14874	14874	14874	14874	14874
45	Latch Plate			16117	16117		
46	Tubing, 5/8" x .375" x 1/2"			11737R000.5	11737R000.5		
47	Bolt, 3/8"-16 x 1-1/4", Hex			13876	13876		
48	Latch Handle			16116A	16116A		
49	Bolt, 3/8"-16 x 3/4", Hex			12463	12463		
50	Screw, 7/16"-14 x 1-1/8" Adj.			16118	16118		
51	Nut, 7/16"-14, Hex Jam			14414	14414		
52	Spring, 5" x 2.25" x .49"			14876	14876		
53	Cap, Vinyl			12663	12663		
54	Bolt, 5/8"-16 x 2", Hex					10027	10027
55	Tubing, 5/8" x .375" x 1.19"					11737R001.19	11737R001.19

CONFIDENTIAL PROPRIETARY INFORMATION!  
NOT TO BE COPIED OR DISCLOSED  
WITHOUT PRIOR WRITTEN PERMISSION  
OF THE BRAUN CORPORATION

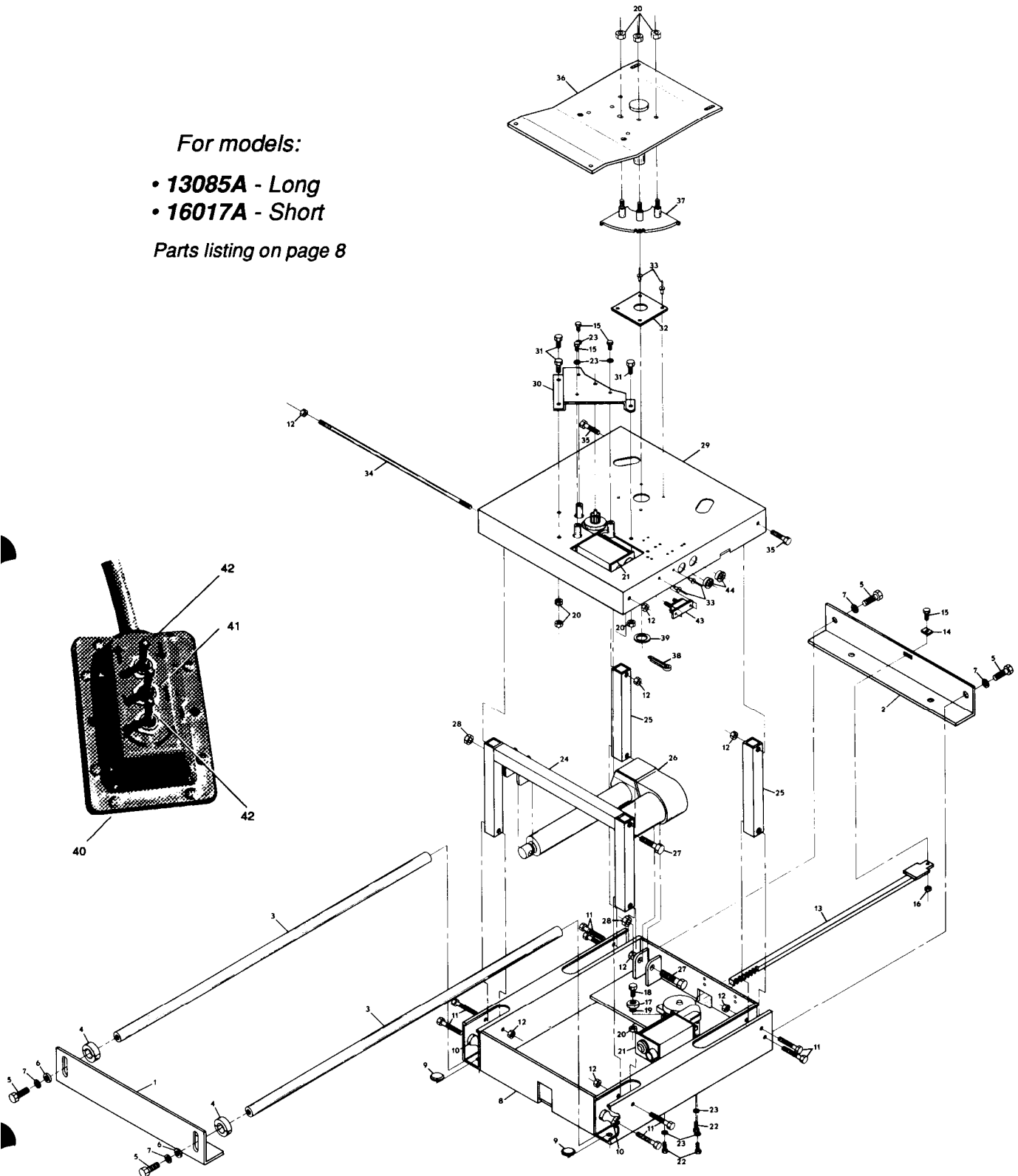
## REPAIR PARTS

### 6-Way Power Seat Exploded View

For models:

- 13085A - Long
- 16017A - Short

Parts listing on page 8



CONFIDENTIAL PROPRIETARY INFORMATION!  
NOT TO BE COPIED OR DISCLOSED  
WITHOUT PRIOR WRITTEN PERMISSION  
OF THE BRAUN CORPORATION

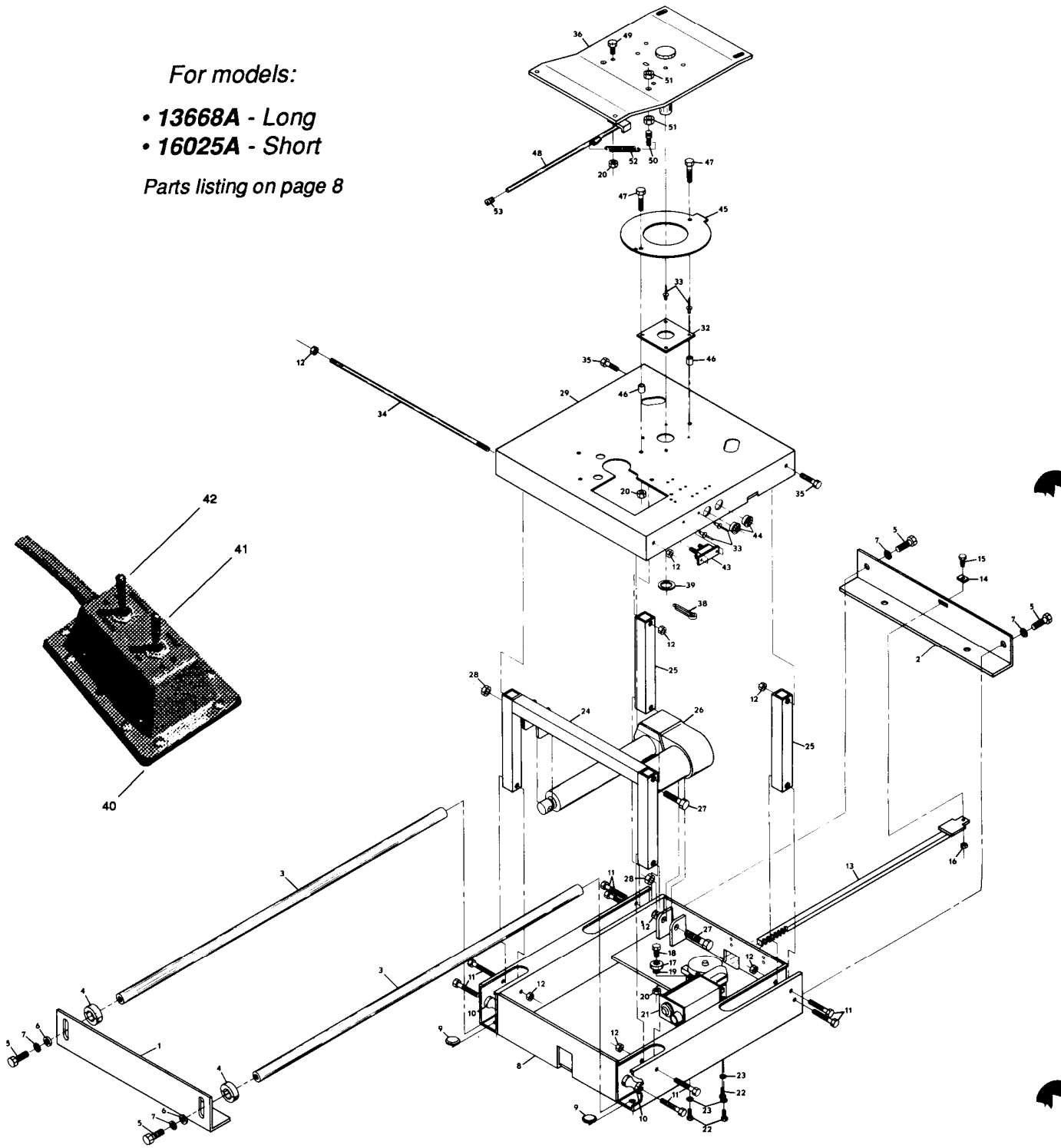
## REPAIR PARTS

### 4-Way Power Seat (with Swivel) Exploded View

For models:

- 13668A - Long
- 16025A - Short

Parts listing on page 8



CONFIDENTIAL PROPRIETARY INFORMATION!  
NOT TO BE COPIED OR DISCLOSED  
WITHOUT PRIOR WRITTEN PERMISSION  
OF THE BRAUN CORPORATION

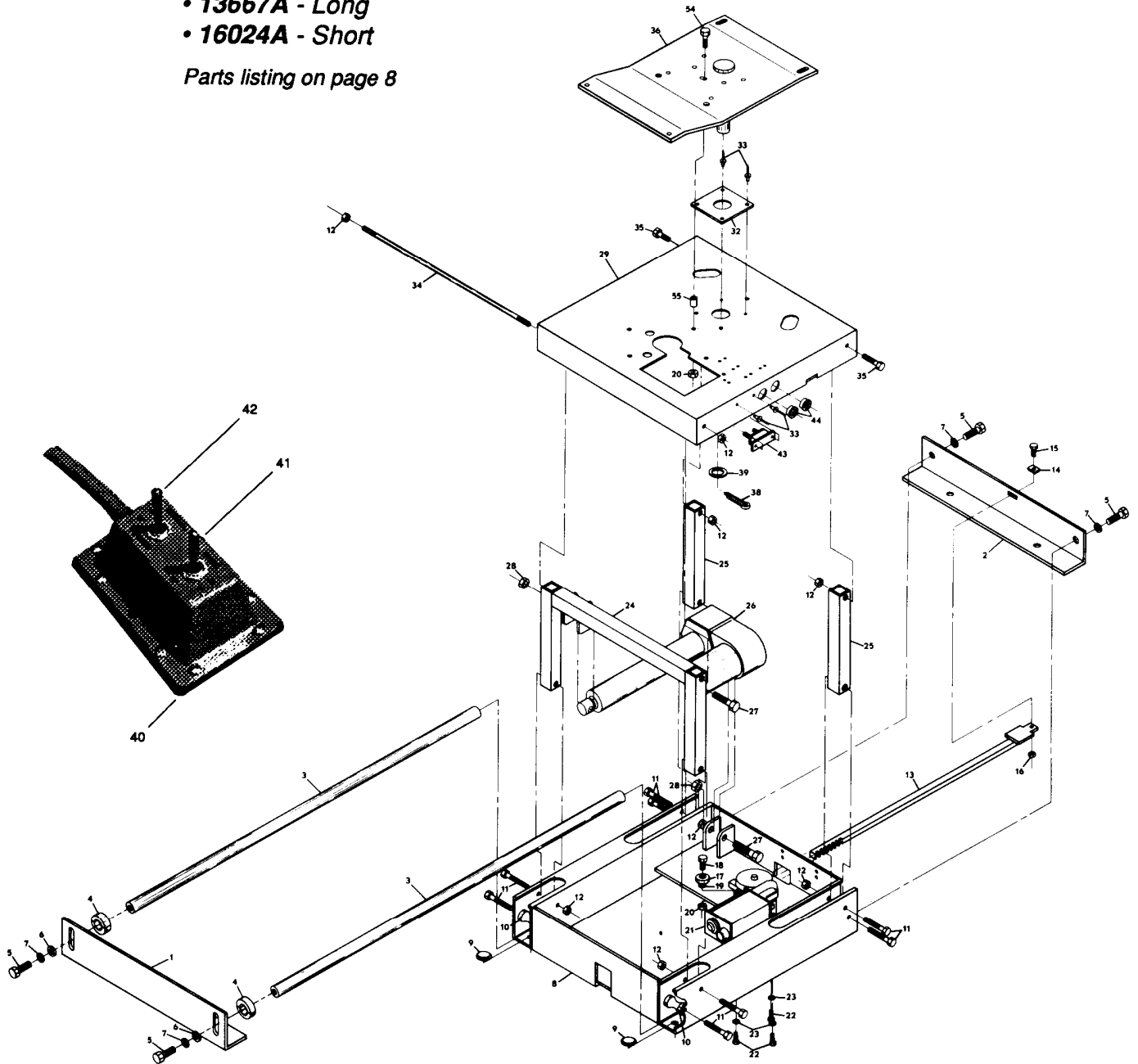
## REPAIR PARTS

### 4-Way Power Seat (less Swivel) Exploded View

For models:

- 13667A - Long
- 16024A - Short

Parts listing on page 8



## SAFETY PRECAUTIONS

- Keep hands and feet clear of moving parts.
- Keep operation area clear of foreign objects, control cable, etc.
- **DO NOT** overload or abuse.
- **DO NOT** operate if seat base is damaged, malfunctioning, etc.
- Installation and service should be performed by qualified (authorized) personnel only.

CONFIDENTIAL PROPRIETARY INFORMATION  
NOT TO BE COPIED OR DISCLOSED  
WITHOUT PRIOR WRITTEN PERMISSION  
OF THE BRAUN CORPORATION

## Power Seat Base LIMITED WARRANTY

The Braun Corporation of Winamac, Indiana warrants its power seat base against defects in material and workmanship for a period of one year, providing the seat base is installed, operated and maintained properly. This warranty is limited to the original purchaser and does not cover defects in the motor vehicle on which it is installed, or defects in the seat base caused by a defect in any part of the motor vehicle.

This warranty commences on the date of the original retail sale or original use, whichever occurs first, providing the attached registration card is completed and returned to The Braun Corporation within 10 days.

This warranty does not cover components such as switches, wiring, electric motors, etc. These items are covered by a 90 day warranty. Purchased components are also covered under separate warranty by the manufacturer of said components. Under no circumstances will charges for labor, consequential damage, or repair expense be allowed.

This warranty does not cover normal maintenance, service, or periodic adjustments necessitated by use or wear. The Braun Corporation will, under no circumstances, accept liability for loss of use of seat base or vehicle in which it is installed or loss of time.

This warranty will become null and void if the seat base has been damaged thru accident, misuse, or neglect, or if the seat base has been altered in any respect. Defective parts must be returned to our factory in Winamac, Indiana, prepaid, for our inspection before repair or replacement, at our option, can be made. This warranty is in lieu of any other warranty or condition including merchantability or fitness for a particular purpose.



1014 S. Monticello, P.O. Box 310, Winamac, IN 46996

1-800-THE LIFT In Indiana Call: (219) 946-6153

FAX: (219) 946-4670 TELEX: 3728944

5 Industrial Road Fairfield, NJ 07004 (201) 882-5455 FAX: (201) 882-8076	5072 113th Ave. N. Clearwater, FL 34620 (813) 573-2737 FAX: (813) 573-5069	15731 Graham St. Huntington Beach, CA 92649 (714) 891-4305 FAX: (714) 893-3061
---	---	---

MADE IN  
AMERICA

All illustrations, descriptions and specifications in this manual are based on the latest product information available at the time of publication. The Braun Corporation reserves the right to make changes at any time without notice.