

Maintenance and Service Manual

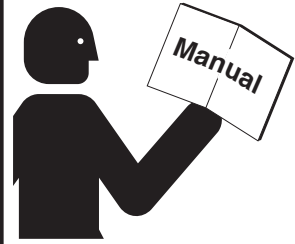
Wheelchair-Accessible Lowered Floor Conversion Public Use

featuring 2008 and Newer

Chrysler Minivans



! WARNING



Read manual before servicing. Failure to do so may result in serious bodily injury and/or property damage.

INTRODUCTION

Introduction

WARNING

Maintenance, lubrication, troubleshooting and service procedures must be performed as specified by an authorized service technician. Failure to do so may result in serious bodily injury and/or property damage.

Braun® lowered floor minivan conversions are designed to provide mobility independence for wheelchair passengers.

Familiarity with proper operation and maintenance procedures will help ensure safe, troublefree operation.

This manual addresses public use conversion standard features as well as options (as available). Safety precautions, maintenance and troubleshoot-

ing details are provided. A Repair Parts section with exploded views and corresponding parts lists are also provided.

Refer to the information applicable for the conversion you are servicing. Disregard information that does not apply.

Contact The Braun Corporation at 1-800-THE LIFT if any of this information is not understood.

Warranty and Return Authorization

Refer to the Limited Warranty Booklet for detailed terms and provisions. When processing any warranty claims (parts, repairs, etc.), all requests must be processed through the Braun Corporation Product Support

Department. Product Support will issue a Return Material Authorization (RMA) number and detail the procedures required for processing returns and/or authorizing credit.

The last eight digits of the vehicle identification number (VIN) must be provided when filing a warranty claim or ordering parts.

Safety Precautions	2	Repair Parts	
Towing	2	Parts List - Manual Swing Out	
Maintenance and Service		Ramp - Platform Assembly	20
Maintenance and Service Requirements	3	Exploided View - Manual Swing Out	
Preventative Maintenance	4	Ramp - Platform Assembly	21A, 22A
Maintenance and Lubrication Schedule	4-6	Exploided View - Manual Swing Out	
Troubleshooting Diagnosis Chart	7-10	Ramp - Ramp Threshold, Arm &	
Below Floor Obstructions	11	Spring Assembly	21B, 22B
Auxiliary Power Supply	12	Part List - Manual Swing Out Ramp - Ramp	
Wiring Diagrams		Threshold, Arm & Spring Assembly	23
Wiring Diagram - Driver Seat Electrical System		Dimensions	24
2008 / 2009	13A, 14A		
Wiring Diagram - Passenger Seat Electrical			
System - 2008 / 2009	13B, 14B		
Wiring Diagram - Driver Seat Electrical System			
12 Pin Connector - 2010	15A, 16A		
Wiring Diagram - Driver Seat Electrical System			
24 Pin Connector - 2010	15B, 16B		
Wiring Diagram - Passenger Seat Electrical			
System - 2010	17A, 18A		
Wiring Diagram - Fuse Panel, Lighting, Alarm,			
Door Switch & Canister Harness	17B, 18B		

SAFETY PRECAUTIONS

Safety Precautions

⚠️ WARNING

Read this manual, the conversion's operator's manual and supplements before performing operation, maintenance or service procedures. Failure to do so may result in serious bodily injury and/or property damage.

- ⚠️ WARNING** Maintenance and service procedures must be performed only by authorized service personnel.
- ⚠️ WARNING** Perform maintenance and lubrication procedures exactly as outlined in the Maintenance and Lubrication Schedule contained in this manual.
- ⚠️ WARNING** Perform troubleshooting and service procedures as outlined in this manual and/or service bulletins supplied with replacement parts.
- ⚠️ WARNING** Replacement parts must be Braun authorized replacements.
- ⚠️ WARNING** Do not use accessory devices not authorized by The Braun Corporation.

- ⚠️ WARNING** Keep clear of area in which ramp operates.
- ⚠️ WARNING** Never modify (alter) a Braun Corporation lowered floor minivan conversion.
- ⚠️ WARNING** Do not install a raised top on a Braun Corporation lowered floor minivan conversion.
- ⚠️ WARNING** Use of a Braun Corporation lowered floor minivan conversion for towing is prohibited.
- ⚠️ WARNING** Failure to follow these safety precautions may result in serious bodily injury and/or property damage.

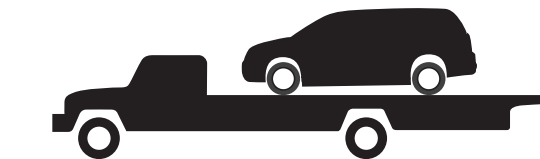
Towing

Towing with a Lowered Floor Conversion

Use of a lowered floor conversion vehicle for towing is prohibited.

Transporting a Lowered Floor Conversion

In case of service, The Braun Corporation recommends that lowered floor conversion vehicles be transported on a trailer rather than towed with one set of wheels suspended and the other set of wheels remaining in road contact.



Trailer Transport

Maintenance and Service Requirements

Braun lowered floor minivan conversions must be maintained and serviced by a Braun authorized service representative who has attended and been certified by The Braun Corporation Sales and Service School for Braun Mobility Products.

Read and become familiar with the operating procedures outlined in the applicable operator's manual and the maintenance and troubleshooting information contained in this manual before beginning operation, maintenance or service procedures.

Contact The Braun Corporation at 1-800-THE LIFT® if any of this information is not understood.

MAINTENANCE and SERVICE

Preventive Maintenance

Maintenance is necessary to ensure safe and trouble free conversion operation. Encourage the consumer to perform preventive maintenance procedures. General preventive maintenance consisting of inspections along with cleaning procedures should be a part of the consumers routine.

Keeping the passenger slide door lower track pan free of debris, ice and snow is one of the most effective preventive maintenance practices to exercise. Regular preventive maintenance procedures will increase the service life of the conversion, as well as enhancing safety.

The consumer should inspect and clean frequently and routinely (minimum four weeks or 100 cycle intervals).

Note: A Preventive Maintenance section is provided in the operator's manual.

Maintenance and Lubrication Schedule

Normal vehicle maintenance must be performed as outlined in the OEM-supplied owner's manual. This maintenance is not the responsibility of The Braun Corporation.

The maintenance and lubrication procedures outlined in this schedule must be performed at the recommended scheduled intervals by a Braun authorized service representative.

Clean specified components and the surrounding area before applying lubricants. When replacing lubricated components, be sure to lubricate during installation procedures.

A "dri-film" style of light oil should be applied where Light Oil is called out (goes on wet and then dries). Lubricants of this type are available that do not attract dust and other debris.

Use of improper lubricants can attract dirt or other contaminants which could result in wear or damage to components. Avoid lubricants that can leave stains.

Some lubricants referenced in the schedule are available from The Braun Corporation (part numbers provided where specified).

Inspection, lubrication and maintenance procedures should be repeated at 3 month intervals following the scheduled 6 month maintenance procedures. These intervals are a general guideline and will vary according to frequency of use and conditions. Exposure to severe conditions (weather, environment, contamination, heavy usage, etc.) may require inspection and maintenance procedures to be performed more often than specified.

Discontinue use immediately if maintenance and lubrication procedures are not properly performed, or if there is any sign of wear, damage, improper operation or any abnormal condition. Contact your sales representative or call The Braun Corporation at 1-800-THE LIFT®. One of our national Product Support representatives will direct you to an authorized service technician who will inspect your conversion.

WARNING

Maintenance and lubrication procedures must be performed as specified by an authorized service technician. Failure to do so may result in serious bodily injury and/or property damage.

Maintenance and Lubrication Schedule

3 Months	Manual Ramp	
	Outboard ramp extension hinge and fasteners	Clean and lubricate with Light Oil. Resecure or replace fasteners as needed
	Inspect ramp inboard pivot points (bolts screws and bushings/bearings) for positive securement, wear or damage	Clean and lubricate with Light Oil. Tighten, replace or correct as needed
	Inspect ramp fold pickup bearing for positive securement, alignment, wear or other damage	Replace or correct as needed. If bearing retaining screw is not secure or is removed for service, apply Blue #242 Thread Locker Loctite to retaining screw and tighten.
	Inspect ramp fold arm for positive securement, alignment, wear or other damage	Tighten, replace or correct as needed
	Inspect ramp fold arm bearing slot for excessive wear or damage	Replace if needed
	Inspect ramp floor mounting hardware for securement (loose or missing)	Resecure, replace or correct as needed
	General Items	
Lower slide door track	Inspect for debris/obstructions and clean (vacuum or blow out debris using compressor)	
Wheelchair and occupant restraint belts and tie down track	Inspect for any defects such as cuts, fraying or any malfunction of belt, buckle or securement hardware. Clean dirt and debris from tie down track. Replace immediately if damaged. Refer to inspection and maintenance instructions supplied by belt manufacturer.	
Inspect removable seat bases for proper engagement of latching mechanisms	Replace or correct as needed	

6 Months	Perform all procedures listed in previous section also	
	Manual Ramp	
	Remove interior cover and inspect:	
	Top pivot (wall mounting) bracket mounting bolts for securement (loose or missing)	Resecure, replace damaged parts or otherwise correct as needed. Note: See applicable Manual Ramp exploded views on pages 15B / 16B and 19A / 20A.

MAINTENANCE and SERVICE

Maintenance and Lubrication Schedule

6 Months	<p>Main (spring) housing mounting bolts for securement (loose or missing)</p> <p>Ramp fold arm securement (collar and mounting screws)</p> <p>Torsion spring securement hairpin cotter, external snap ring(s) or key (loose or missing)</p> <p>Inspect Power Source: Vehicle battery, 50 ampere fuse, vehicle engine compartment fuse block and center console fuse block.</p> <p>Swing Out Ramp</p> <p>Inspect:</p> <p>Latch for proper operation (apply Light Oil)</p> <p>Latch mounting hardware for positive securement (loose or missing mounting hardware)</p> <p>Latch pin for positive securement, wear, misalignment, or other damage</p> <p>Missing or damaged ramp top pivot bracket securement cotter pin (hairpin cotter or "R" clip)</p> <p>Top and/or bottom ramp pivot points (axles and/or bearing surfaces) for deformation, wear or other damage</p> <p>Bottom ramp pivot pin (axle) plastic flanged bearing damaged or missing.</p> <p>Latch release rod for positive securement, alignment, wear, or other damage</p>	<p>Resecure, repair or replace</p> <p>Realign, resecure, tighten, lubricate, replace damaged parts or otherwise correct as needed.</p>
-----------------	--	--

Consecutive 3 Month Intervals	<p>Repeat all previously listed inspection, lubrication and maintenance procedures at 3 month intervals.</p>
--------------------------------------	--

Troubleshooting Diagnosis Chart

⚠ WARNING

Troubleshooting and repair procedures must be performed as specified by an authorized service technician only. Failure to do so may result in serious bodily injury and/or property damage.

Operation should be discontinued immediately if a conversion problem occurs. Repairs should not be attempted by the consumer. Contact the sales representative or call The Braun Corporation at 1-800-THE LIFT®. One of our national Product Support representatives will direct you to an authorized service technician who will inspect your vehicle.

The cause of the problem can be determined by locating the

function and related symptom in the Troubleshooting Diagnosis Charts. The specific cause and remedy can then be determined by process of elimination. Wiring Diagrams are provided to aid in troubleshooting.

A Repair Parts section with exploded views and corresponding parts lists is also provided. Correct the problem if possible. If the problem continues, contact The Braun Corporation.

FUNCTION	SYMPTOM	POSSIBLE CAUSE	REMEDY
1.00 DOOR (OPEN)	1.10 Faulty Open Operation	1.11 Misalignment, deformation, wear or other damaged to lower slide door track 1.12 Misalignment, deformation, wear or other damage to door, lower door extension, or door jamb components 1.13 Obstruction in lower door track 1.14 Mechanical binding	Realign, tighten, replace damaged parts or otherwise correct as needed Realign, tighten, replace damaged parts or otherwise correct as needed Remove obstruction Correct
	1.20 Door Does Not Open Fully	1.21 See 1.13 1.22 Door doesn't engage OEM full open position hold latch	Correct

TROUBLESHOOTING

FUNCTION	SYMPTOM	POSSIBLE CAUSE	REMEDY
----------	---------	----------------	--------

2.00 RAMP DEPLOY	2.10 No Deploy Operation	2.11 Loose, damaged or missing fold arm securement collar/coupling and/or screws	Tighten, replace or otherwise correct as needed
	2.20 Ramp Contacts Door	2.21 Door not fully open	Open door or see 1.20
	2.30 Faulty Deploy Operation	2.31 Misalignment or damage to: <ul style="list-style-type: none"> • Ramp fold bearing • Ramp fold arm • Ramp fold arm bearing slot • Ramp pivot points or hinge(s) 2.32 Mechanical binding 2.33 Lack of lubrication	Realign, tighten, replace damaged parts or otherwise correct as needed Correct Lubricate - See Maintenance and Lubrication Schedule
	2.40 Faulty Ramp Extension Unfold (Deploy)	2.41 Lack of lubrication 2.42 Ramp extension hinge damage	Lubricate - See Maintenance and Lubrication Schedule Correct or replace as needed

3.00 FOLDOUT RAMP STOW	3.10 No Stow Operation	3.11 See 2.10	
	3.20 Faulty Stow Operation	4.21 Fold arm latch catch (support/stop) out of adjustment, loose or otherwise damaged 4.22 See 2.10, 2.30 and 2.40	Adjust tighten or otherwise correct as needed

4.00 DOOR (CLOSE)	4.10 Faulty Operation	4.11 See 1.10	
	4.20 Door Does Not Close Fully	4.21 See 1.10 4.22 Ramp obstructing door	Adjust ramp latch catch (support/stop) for more travel or otherwise correct as needed

TROUBLESHOOTING

FUNCTION	SYMPTOM	POSSIBLE CAUSE	REMEDY
5.00 SWING OUT RAMP SYSTEM (if equipped)	5.10 No Release Operation	5.11 Release rod broken, disconnected or otherwise damaged 5.12 Faulty swing out ramp latch (will not disengage)	Replace, attach or otherwise correct Replace latch
	5.20 Faulty Release Operation	5.21 Loose, worn or otherwise damaged swing out ramp latch 5.22 Missing, loose, worn, bent, misaligned or otherwise damaged swing out ramp latch pin 5.23 Mechanical binding 5.24 Lack of lubrication	Tighten, replace or otherwise correct as needed Tighten, replace or otherwise correct as needed Correct as needed Lubricate with Light Oil
	5.30 Faulty Rotation Operation	5.31 Missing plastic flanged bearing (washer) at bottom pivot point (axle) 5.32 Misalignment, deformation, wear or other damage to top and/or bottom pivot points (axles and/or bearing surfaces) 5.33 Mechanical binding	Replace Correct as needed Correct as needed
	5.40 No Latching Operation	5.41 Faulty swing out ramp latch (will not engage) 5.42 See 5.20	Replace latch
	5.50 Faulty Latching Operation	5.51 See 5.20 and 5.41	
	6.00 NO POWER	6.10 No Power to Conversion Systems (Circuit Problem)	6.11 Poor ground connection 6.12 Battery terminals dirty 6.13 Battery damaged 6.14 Battery discharged 6.15 12 volt source (check fuses for 12 volts)
7.00 BACKUP ALARM	7.10 No Operation	7.11 See 6.00 7.12 Faulty alarm 7.13 Backup alarm harness disconnected or damaged	Replace alarm Connect, repair or replace

TROUBLESHOOTING

FUNCTION	SYMPTOM	POSSIBLE CAUSE	REMEDY
8.00 PARK INTERLOCK	8.10 No Interlock Operation	8.11 See 6.00 8.12 Park interlock (door jamb) switch harness disconnected or damaged 8.13 Park interlock (door jamb) switch out of adjustment or damaged	Connect, repair or replace Adjust or replace
	8.20 Can't Shift Out of Park	8.21 Door not closed 8.22 See 8.12 and 8.13	Close door
9.00 ENTRANCE LIGHTS	9.10 No ON Operation	9.11 See 6.00 9.12 Door not open 9.13 Faulty light 9.14 Entrance light harness disconnected or damaged	Open door Replace Connect, repair or replace
	9.20 No OFF Operation	9.21 Door not closed 9.22 See 6.00 and 9.14	Close door

BELOW FLOOR OBSTRUCTIONS

Below Floor Obstruction Detail & Guidelines

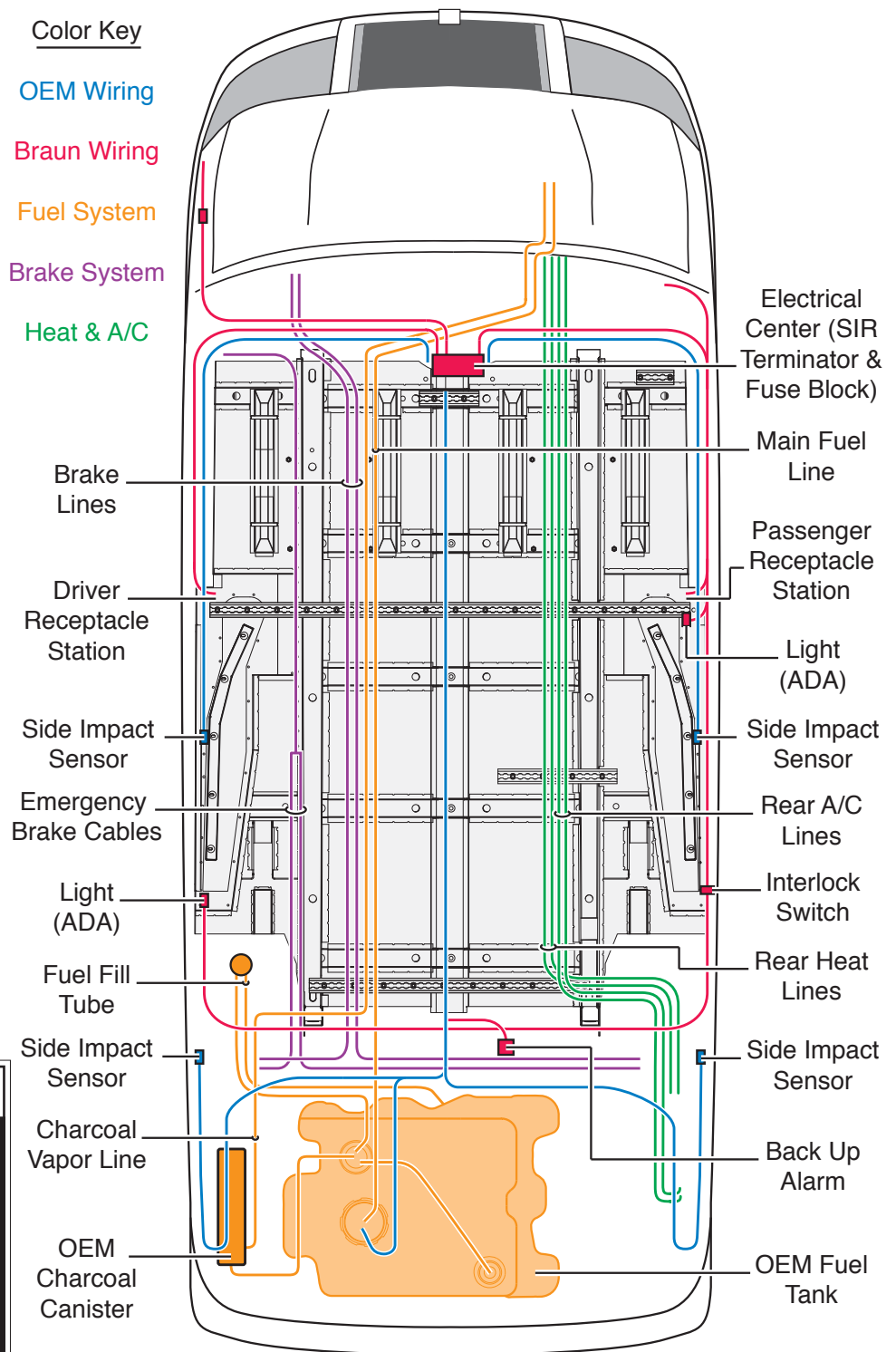
When installing aftermarket equipment in a conversion, obstructions below the floor must be avoided. Obstructions include wiring, fuel system, brake lines, etc. Installers must be aware of these obstructions.

Refer to this illustration when installing aftermarket equipment to avoid contacting or damaging vital components under the floor.

Drilling or cutting into such obstructions may result in potential hazards as well as property damage.

Note: Some wiring harnesses shown may not be present. Avoid all harness locations.

- Color Key**
- OEM Wiring
 - Braun Wiring
 - Fuel System
 - Brake System
 - Heat & A/C



⚠ WARNING

Check for obstructions such as wires, gas lines, exhaust, etc. before drilling or cutting through floor. Failure to do so may result in serious bodily injury and/or property damage.

AUXILIARY POWER SUPPLY

Auxiliary Power Supply

Auxiliary Power Supply: Do not connect auxiliary devices directly to the vehicle battery. Doing so may result in damage to electrical system and/or electronic components.

Two fuse blocks are provided

CAUTION

Do not connect auxiliary devices to vehicle battery. Doing so may result in damage to electrical system and/or electronic components.

as an auxiliary power source for dealer-installed auxiliary electrical device(s). See details and specifications below. The fuse blocks are located at the bottom of the center dash console.

Below Floor Obstructions: When installing aftermarket equipment in a conversion, obstructions below the floor must be avoided. Obstructions include wiring, fuel system, brake lines, etc. Installers must be aware of these obstructions.

Refer to the illustration on previous page to avoid contacting or damaging vital components under the floor.

WARNING



Risk of electrical fire! Install and electrically terminate auxiliary electrical device as specified by device manufacturer.

Fuse Blocks

Fuse Blocks: Two fuse blocks are provided for use as an auxiliary power source (one Ignition fuse block and one Battery fuse block).

The Battery fuse block provides power at all times (independent of the vehicle ignition). The Ignition fuse block supplies power only when the vehicle ignition is on.

The installer is responsible for supplying the correct gauge wire and fuse for the particular device to be attached to the fuse block (as specified by the manufacturer of the device).

Ignition Fuse Block: The total maximum load must not exceed 30 amperes.

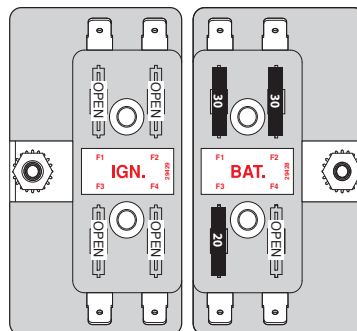
Battery Fuse Block: The total maximum load must not exceed 40 amperes per fuse.

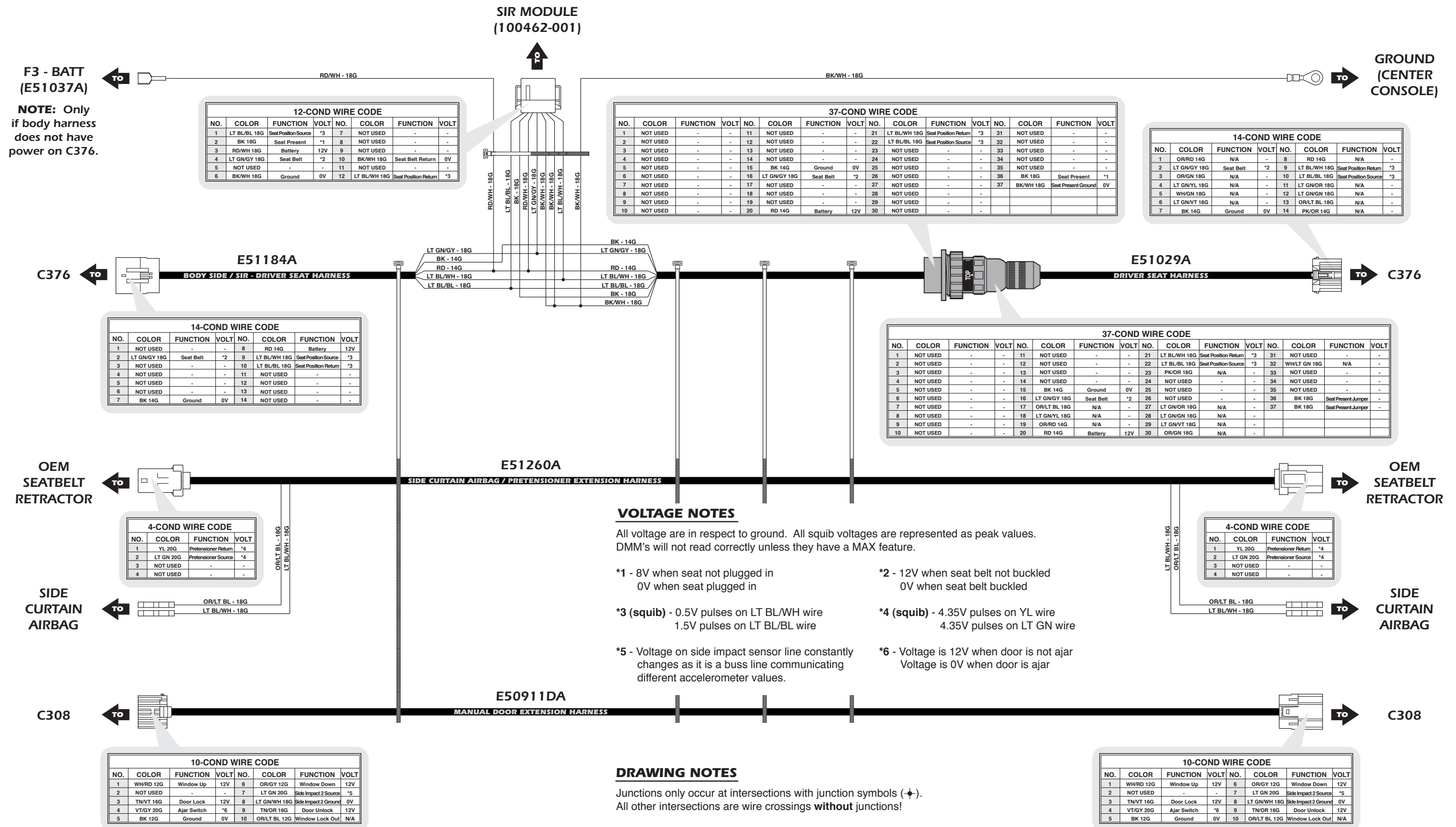
Note: If installing an auxiliary electrical device that requires more than a 40 ampere power source, an alternative power source must be provided.

Fuse Block Access: The fuse blocks are located at the bottom of the center console. Remove bottom console panel (3 fasteners per side).

Note: The fuse blocks are part of an electrical assembly. Two grounding studs are also provided.

Under Dash Fuse Blocks



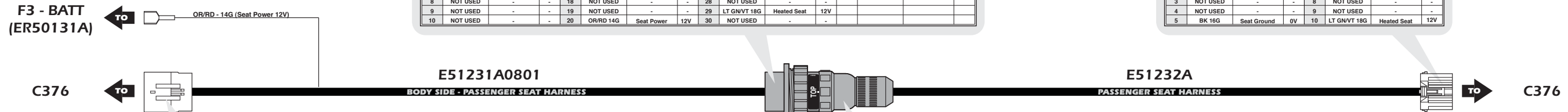


Wiring Diagram - Passenger Seat Electrical System - 2008 / 2009

NOTE: Power passenger seat may not be common to all vehicles!

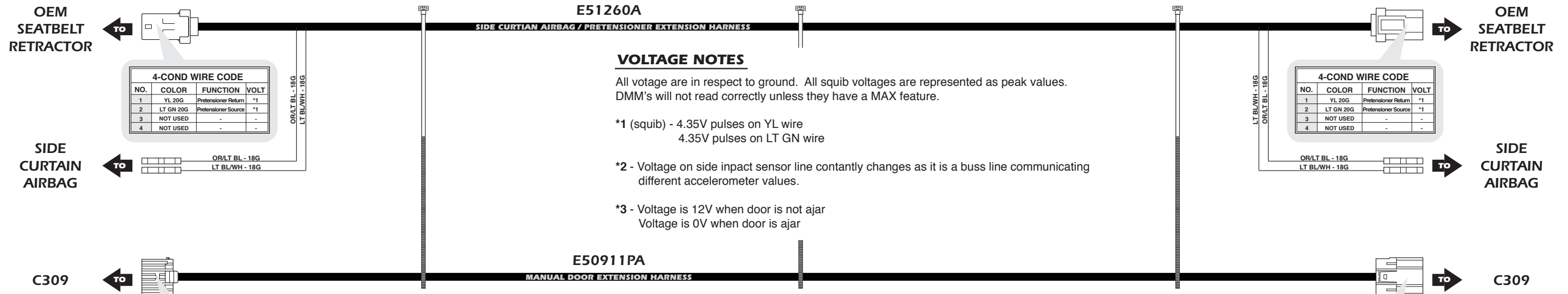
37-COND WIRE CODE															
NO.	COLOR	FUNCTION	VOLT	NO.	COLOR	FUNCTION	VOLT	NO.	COLOR	FUNCTION	VOLT	NO.	COLOR	FUNCTION	VOLT
1	NOT USED	-	-	11	NOT USED	-	-	21	NOT USED	-	-	31	NOT USED	-	-
2	NOT USED	-	-	12	NOT USED	-	-	22	NOT USED	-	-	32	NOT USED	-	-
3	NOT USED	-	-	13	NOT USED	-	-	23	NOT USED	-	-	33	NOT USED	-	-
4	NOT USED	-	-	14	NOT USED	-	-	24	NOT USED	-	-	34	NOT USED	-	-
5	NOT USED	-	-	15	BK 16G	Seat Ground	0V	25	NOT USED	-	-	35	NOT USED	-	-
6	NOT USED	-	-	16	NOT USED	-	-	26	NOT USED	-	-	36	NOT USED	-	-
7	NOT USED	-	-	17	NOT USED	-	-	27	NOT USED	-	-	37	NOT USED	-	-
8	NOT USED	-	-	18	NOT USED	-	-	28	NOT USED	-	-	-	-	-	-
9	NOT USED	-	-	19	NOT USED	-	-	29	LT GNVT 18G	Heated Seat	12V	-	-	-	-
10	NOT USED	-	-	20	OR/RD 14G	Seat Power	12V	30	NOT USED	-	-	-	-	-	-

10-COND WIRE CODE							
NO.	COLOR	FUNCTION	VOLT	NO.	COLOR	FUNCTION	VOLT
1	OR/RD 14G	Seat Power	12V	6	NOT USED	-	-
2	NOT USED	-	-	7	NOT USED	-	-
3	NOT USED	-	-	8	NOT USED	-	-
4	NOT USED	-	-	9	NOT USED	-	-
5	BK 16G	Seat Ground	0V	10	LT GNVT 18G	Heated Seat	12V



10-COND WIRE CODE							
NO.	COLOR	FUNCTION	VOLT	NO.	COLOR	FUNCTION	VOLT
1	NOT USED	-	-	6	NOT USED	-	-
2	NOT USED	-	-	7	NOT USED	-	-
3	NOT USED	-	-	8	NOT USED	-	-
4	NOT USED	-	-	9	NOT USED	-	-
5	BK 16G	Seat Ground	0V	10	LT GNVT 18G	Heated Seat	12V

37-COND WIRE CODE															
NO.	COLOR	FUNCTION	VOLT	NO.	COLOR	FUNCTION	VOLT	NO.	COLOR	FUNCTION	VOLT	NO.	COLOR	FUNCTION	VOLT
1	NOT USED	-	-	11	NOT USED	-	-	21	NOT USED	-	-	31	NOT USED	-	-
2	NOT USED	-	-	12	NOT USED	-	-	22	NOT USED	-	-	32	NOT USED	-	-
3	NOT USED	-	-	13	NOT USED	-	-	23	NOT USED	-	-	33	NOT USED	-	-
4	NOT USED	-	-	14	NOT USED	-	-	24	NOT USED	-	-	34	NOT USED	-	-
5	NOT USED	-	-	15	BK 16G	Seat Ground	0V	25	NOT USED	-	-	35	NOT USED	-	-
6	NOT USED	-	-	16	NOT USED	-	-	26	NOT USED	-	-	36	NOT USED	-	-
7	NOT USED	-	-	17	NOT USED	-	-	27	NOT USED	-	-	37	NOT USED	-	-
8	NOT USED	-	-	18	NOT USED	-	-	28	NOT USED	-	-	-	-	-	-
9	NOT USED	-	-	19	NOT USED	-	-	29	LT GNVT 18G	Heated Seat	12V	-	-	-	-
10	NOT USED	-	-	20	OR/RD 14G	Seat Power	12V	30	NOT USED	-	-	-	-	-	-



VOLTAGE NOTES

All voltage are in respect to ground. All squib voltages are represented as peak values. DMM's will not read correctly unless they have a MAX feature.

*1 (squib) - 4.35V pulses on YL wire
4.35V pulses on LT GN wire

*2 - Voltage on side impact sensor line constantly changes as it is a buss line communicating different accelerometer values.

*3 - Voltage is 12V when door is not ajar
Voltage is 0V when door is ajar

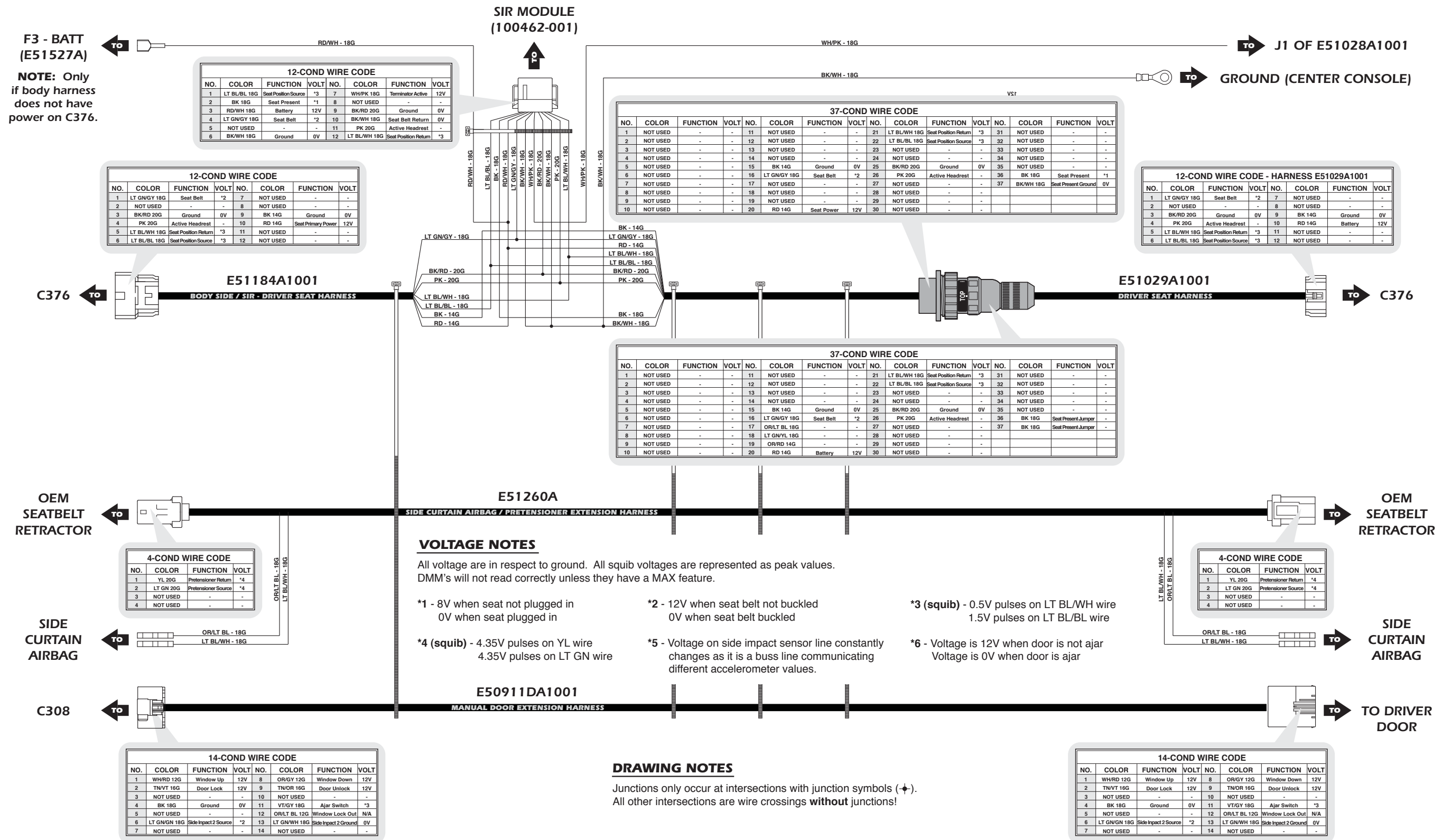
DRAWING NOTES

Junctions only occur at intersections with junction symbols (⚡). All other intersections are wire crossings **without** junctions!

10-COND WIRE CODE							
NO.	COLOR	FUNCTION	VOLT	NO.	COLOR	FUNCTION	VOLT
1	WH/RD 12G	Window Up	12V	6	OR/BN 12G	Window Down	12V
2	NOT USED	-	-	7	LT BL 20G	Side Impact 2 Source	*2
3	DK BL 16G	Door Lock	12V	8	WH/LT GN 18G	Side Impact 2 Ground	0V
4	VT/YL 20G	Ajar Switch	*3	9	TN/LT BL 16G	Door Unlock	12V
5	BK 12G	Ground	0V	10	OR/LT BL 12G	Window Lock Out	N/A

10-COND WIRE CODE							
NO.	COLOR	FUNCTION	VOLT	NO.	COLOR	FUNCTION	VOLT
1	WH/RD 12G	Window Up	12V	6	OR/BN 12G	Window Down	12V
2	NOT USED	-	-	7	LT BL 20G	Side Impact 2 Source	*2
3	DK BL 16G	Door Lock	12V	8	WH/LT GN 18G	Side Impact 2 Ground	0V
4	VT/YL 20G	Ajar Switch	*3	9	TN/LT BL 16G	Door Unlock	12V
5	BK 12G	Ground	0V	10	OR/LT BL 12G	Window Lock Out	N/A

Wiring Diagram - Driver Seat Electrical System - 12 Pin Seat Connector - 2010 & Up



Unfold for:
Wiring Diagram
Driver Seat
Electrical System 2010 & Up

Wiring Diagram - Driver Seat Electrical System - 24 Pin Seat Connector - 2010 & Up

F3 - BATT (E51527A)

NOTE: Only if body harness does not have power on C376.

12-COND WIRE CODE							
NO.	COLOR	FUNCTION	VOLT	NO.	COLOR	FUNCTION	VOLT
1	LT BL/BL 20G	Seat Position Source	*3	7	WH/PK 18G	Terminal Active	12V
2	BK 18G	Seat Present	*1	8	PK 20G	Active Headrest	-
3	RD/WH 18G	Battery	12V	9	NOT USED	-	-
4	LT GN/GY 18G	Seat Belt	*2	10	BK/WH 18G	Ground	0V
5	BK/RD 20G	Ground	0V	11	NOT USED	-	-
6	BK/WH 18G	Ground	0V	12	LT BL/WH 20G	Seat Position Return	*3

SIR MODULE (100462-001)

37-COND WIRE CODE															
NO.	COLOR	FUNCTION	VOLT	NO.	COLOR	FUNCTION	VOLT	NO.	COLOR	FUNCTION	VOLT	NO.	COLOR	FUNCTION	VOLT
1	NOT USED	-	-	11	NOT USED	-	-	21	LT BL/WH 20G	Seat Position Return	*3	31	NOT USED	-	-
2	NOT USED	-	-	12	NOT USED	-	-	22	LT BL/BL 20G	Seat Position Source	*3	32	NOT USED	-	-
3	NOT USED	-	-	13	NOT USED	-	-	23	NOT USED	-	-	33	NOT USED	-	-
4	NOT USED	-	-	14	NOT USED	-	-	24	NOT USED	-	-	34	NOT USED	-	-
5	NOT USED	-	-	15	BK 14G	Ground	0V	25	BK/RD 20G	Ground	0V	35	NOT USED	-	-
6	NOT USED	-	-	16	LT GN/GY 18G	Seat Belt	*2	26	PK 20G	Active Headrest	-	36	BK 18G	Seat Present	*1
7	NOT USED	-	-	17	NOT USED	-	-	27	NOT USED	-	-	37	BK/WH 18G	Seat Present Ground	0V
8	NOT USED	-	-	18	NOT USED	-	-	28	NOT USED	-	-	-	-	-	-
9	NOT USED	-	-	19	NOT USED	-	-	29	NOT USED	-	-	-	-	-	-
10	NOT USED	-	-	20	RD 14G	Seat Primary Power	12V	30	NOT USED	-	-	-	-	-	-

J1 OF E51028A1001

GROUND (CENTER CONSOLE)



24-COND WIRE CODE - HARNESS E51184A1002											
NO.	COLOR	FUNCTION	VOLT	NO.	COLOR	FUNCTION	VOLT	NO.	COLOR	FUNCTION	VOLT
1	NOT USED	-	-	13	NOT USED	-	-	-	-	-	-
2	NOT USED	-	-	14	NOT USED	-	-	-	-	-	-
3	NOT USED	-	-	15	BK 14G	Ground	0V	-	-	-	-
4	NOT USED	-	-	16	LT BL/WH 20G	Seat Position Return	*3	-	-	-	-
5	NOT USED	-	-	17	LT BL/BL 20G	Seat Position Source	*3	-	-	-	-
6	NOT USED	-	-	18	NOT USED	-	-	-	-	-	-
7	NOT USED	-	-	19	NOT USED	-	-	-	-	-	-
8	LT GN/GY 18G	Seat Belt	*2	20	NOT USED	-	-	-	-	-	-
9	NOT USED	-	-	21	RD 14G	Seat Primary Power	12V	-	-	-	-
10	NOT USED	-	-	22	NOT USED	-	-	-	-	-	-
11	PK 20G	Active Headrest	-	23	NOT USED	-	-	-	-	-	-
12	BK/RD 20G	Ground	0V	24	NOT USED	-	-	-	-	-	-

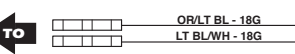
37-COND WIRE CODE															
NO.	COLOR	FUNCTION	VOLT	NO.	COLOR	FUNCTION	VOLT	NO.	COLOR	FUNCTION	VOLT	NO.	COLOR	FUNCTION	VOLT
1	NOT USED	-	-	11	NOT USED	-	-	21	LT BL/WH 18G	Seat Position Return	*3	31	NOT USED	-	-
2	NOT USED	-	-	12	NOT USED	-	-	22	LT BL/BL 18G	Seat Position Source	*3	32	WH/LT GN 18G	LIN Bus	-
3	NOT USED	-	-	13	NOT USED	-	-	23	NOT USED	-	-	33	NOT USED	-	-
4	NOT USED	-	-	14	NOT USED	-	-	24	NOT USED	-	-	34	NOT USED	-	-
5	NOT USED	-	-	15	BK 14G	Ground	0V	25	BK/RD 20G	Ground	0V	35	NOT USED	-	-
6	NOT USED	-	-	16	LT GN/GY 18G	Seat Belt	*2	26	PK 20G	Active Headrest	-	36	BK 18G	Seat Present Jumper	-
7	NOT USED	-	-	17	OR/LT BL 18G	Adjust Pedal	-	27	NOT USED	-	-	37	BK 18G	Seat Present Jumper	-
8	NOT USED	-	-	18	LT GN/WH 18G	Heated Seat	-	28	NOT USED	-	-	-	-	-	-
9	NOT USED	-	-	19	NOT USED	-	-	29	LT GN/VT 18G	Pass. Seat Heat	-	-	-	-	-
10	NOT USED	-	-	20	RD 14G	Battery	12V	30	OR/IGN 18G	Adjust Pedal	-	-	-	-	-

24-COND WIRE CODE - HARNESS E51029A1002											
NO.	COLOR	FUNCTION	VOLT	NO.	COLOR	FUNCTION	VOLT	NO.	COLOR	FUNCTION	VOLT
1	LT GN/WH 18G	Heated Seat	-	13	NOT USED	-	-	-	-	-	-
2	NOT USED	-	-	14	NOT USED	-	-	-	-	-	-
3	NOT USED	-	-	15	BK 14G	Ground	0V	-	-	-	-
4	NOT USED	-	-	16	LT BL/WH 18G	Seat Position Return	*3	-	-	-	-
5	NOT USED	-	-	17	LT BL/BL 18G	Seat Position Source	*3	-	-	-	-
6	OR/LT BL 18G	Adjust Pedal	-	18	NOT USED	-	-	-	-	-	-
7	WH/LT GN 18G	LIN BUS	-	19	NOT USED	-	-	-	-	-	-
8	LT GN/GY 18G	Seat Belt	*2	20	NOT USED	-	-	-	-	-	-
9	OR/IGN 18G	Adjust Pedal	-	21	RD 14G	Battery	12V	-	-	-	-
10	NOT USED	-	-	22	NOT USED	-	-	-	-	-	-
11	PK 20G	Active Headrest	-	23	LT GN/VT 18G	Pass. Seat Heat	-	-	-	-	-
12	BK/RD 20G	Ground	0V	24	NOT USED	-	-	-	-	-	-

OEM SEATBELT RETRACTOR

4-COND WIRE CODE			
NO.	COLOR	FUNCTION	VOLT
1	YL 20G	Pretensioner Return	*4
2	LT GN 20G	Pretensioner Source	*4
3	NOT USED	-	-
4	NOT USED	-	-

SIDE CURTAIN AIRBAG



C308

14-COND WIRE CODE							
NO.	COLOR	FUNCTION	VOLT	NO.	COLOR	FUNCTION	VOLT
1	WH/RD 12G	Window Up	12V	8	OR/GY 12G	Window Down	12V
2	TN/VT 16G	Door Lock	12V	9	TN/OR 16G	Door Unlock	12V
3	NOT USED	-	-	10	NOT USED	-	-
4	BK 18G	Ground	0V	11	VT/GY 18G	Ajar Switch	*3
5	NOT USED	-	-	12	OR/LT BL 12G	Window Lock Out	N/A
6	LT GN/GN 18G	Side Impact 2 Source	*2	13	LT GN/WH 18G	Side Impact 2 Ground	0V
7	NOT USED	-	-	14	NOT USED	-	-

VOLTAGE NOTES

All voltage are in respect to ground. All squib voltages are represented as peak values. DMM's will not read correctly unless they have a MAX feature.

- *1 - 8V when seat not plugged in
0V when seat plugged in
- *2 - 12V when seat belt not buckled
0V when seat belt buckled
- *3 (squib) - 0.5V pulses on LT BL/WH wire
1.5V pulses on LT BL/BL wire
- *4 (squib) - 4.35V pulses on YL wire
4.35V pulses on LT GN wire
- *5 - Voltage on side impact sensor line constantly changes as it is a buss line communicating different accelerometer values.
- *6 - Voltage is 12V when door is not ajar
Voltage is 0V when door is ajar

DRAWING NOTES

Junctions only occur at intersections with junction symbols (⊕). All other intersections are wire crossings **without** junctions!

4-COND WIRE CODE			
NO.	COLOR	FUNCTION	VOLT
1	YL 20G	Pretensioner Return	*4
2	LT GN 20G	Pretensioner Source	*4
3	NOT USED	-	-
4	NOT USED	-	-

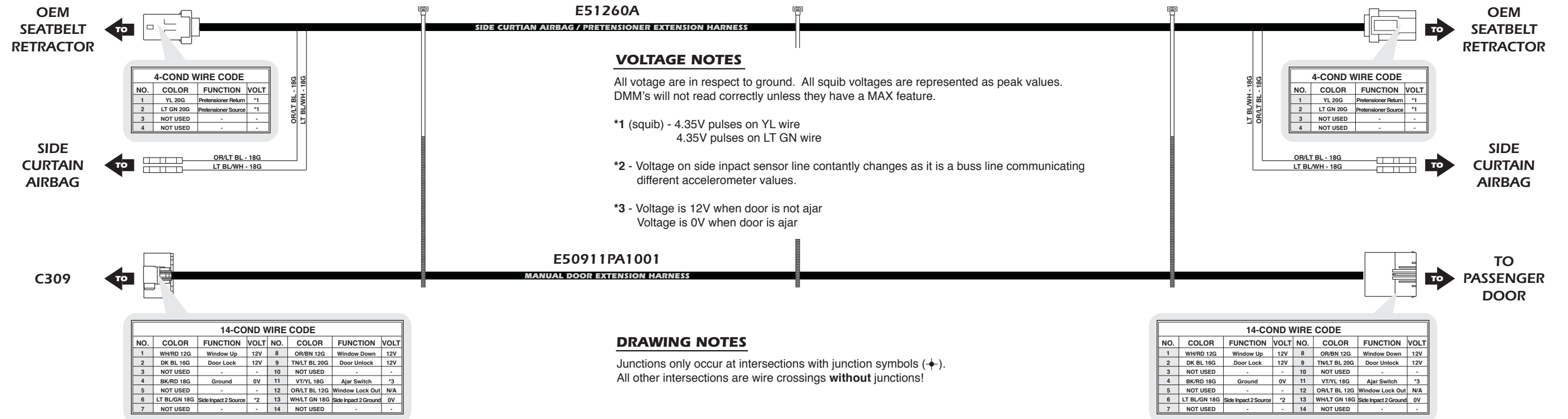
OEM SEATBELT RETRACTOR

SIDE CURTAIN AIRBAG

TO DRIVER DOOR

14-COND WIRE CODE							
NO.	COLOR	FUNCTION	VOLT	NO.	COLOR	FUNCTION	VOLT
1	WH/RD 12G	Window Up	12V	8	OR/GY 12G	Window Down	12V
2	TN/VT 16G	Door Lock	12V	9	TN/OR 16G	Door Unlock	12V
3	NOT USED	-	-	10	NOT USED	-	-
4	BK 18G	Ground	0V	11	VT/GY 18G	Ajar Switch	*3
5	NOT USED	-	-	12	OR/LT BL 12G	Window Lock Out	N/A
6	LT GN/GN 18G	Side Impact 2 Source	*2	13	LT GN/WH 18G	Side Impact 2 Ground	0V
7	NOT USED	-	-	14	NOT USED	-	-

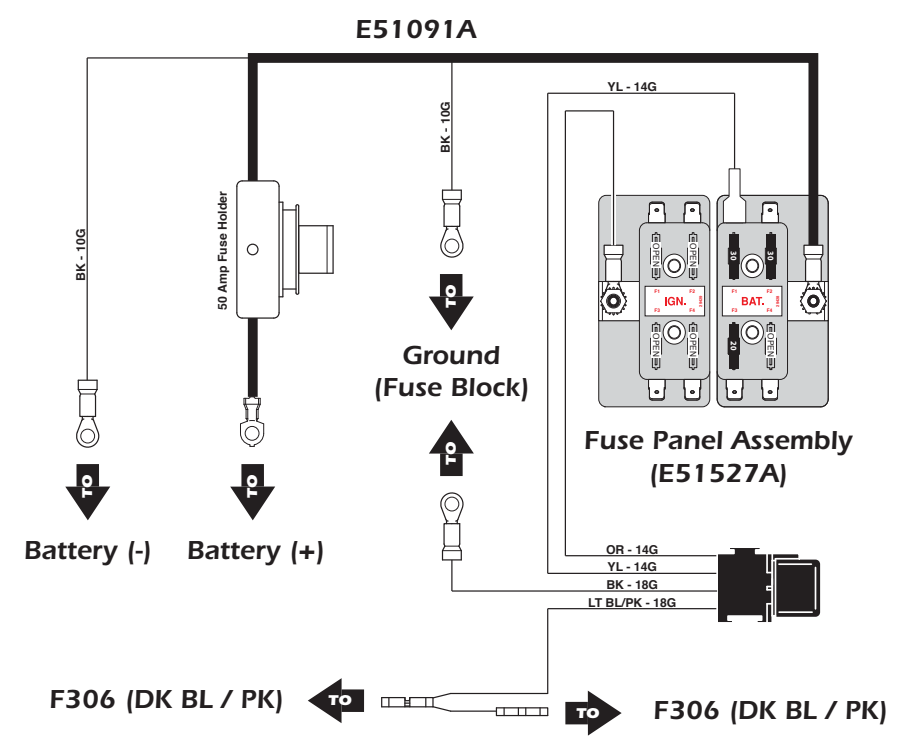
Wiring Diagram - Passenger Seat Electrical System - 2010 & Up



Unfold for:
Wiring Diagram
Passenger Seat
Electrical System 2010 & Up

Wiring Diagram - Fuse Panel, Lighting, Alarm, Door Switch & Canister Harness

KEY	
BK	BLACK WIRE
BL	BLUE WIRE
BN	BROWN WIRE
GN	GREEN WIRE
GY	GRAY
OR	ORANGE WIRE
PK	PINK WIRE
VT	VIOLET WIRE
RD	RED WIRE
TN	TAN WIRE
WH	WHITE WIRE
YL	YELLOW WIRE
??G	WIRE GAUGE
DK ??	DARK ?? WIRE
LT ??	LIGHT ?? WIRE

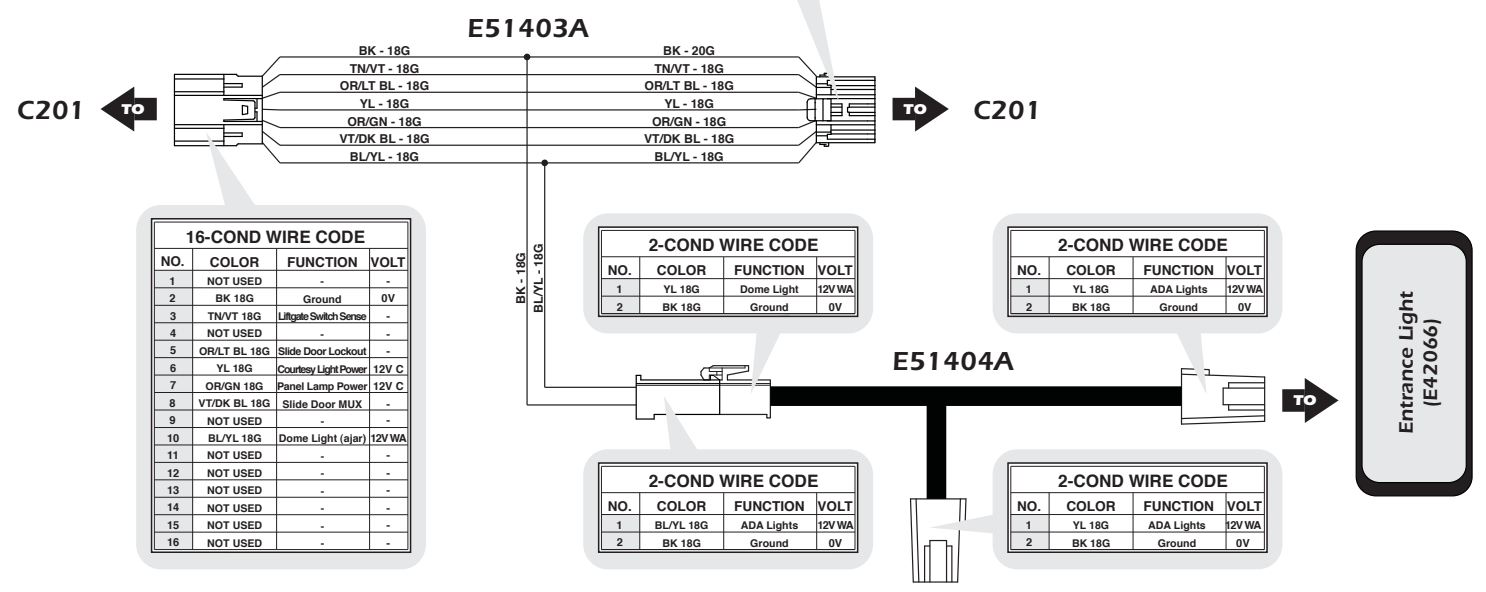


16-COND WIRE CODE							
NO.	COLOR	FUNCTION	VOLT	NO.	COLOR	FUNCTION	VOLT
1	NOT USED	-	-	9	NOT USED	-	-
2	BK 18G	Ground	0V	10	BL/YL 18G	Dome Light (ajar)	12V WA
3	TN/VT 18G	Liftgate Switch Sense	-	11	NOT USED	-	-
4	NOT USED	-	-	12	NOT USED	-	-
5	OR/LT BL 18G	Slide Door Lockout	-	13	NOT USED	-	-
6	YL 18G	Courtesy Light Power	12V C	14	NOT USED	-	-
7	OR/GN 18G	Panel Lamp Power	12V C	15	NOT USED	-	-
8	VT/DK BL 18G	Slide Door MUX	-	16	NOT USED	-	-

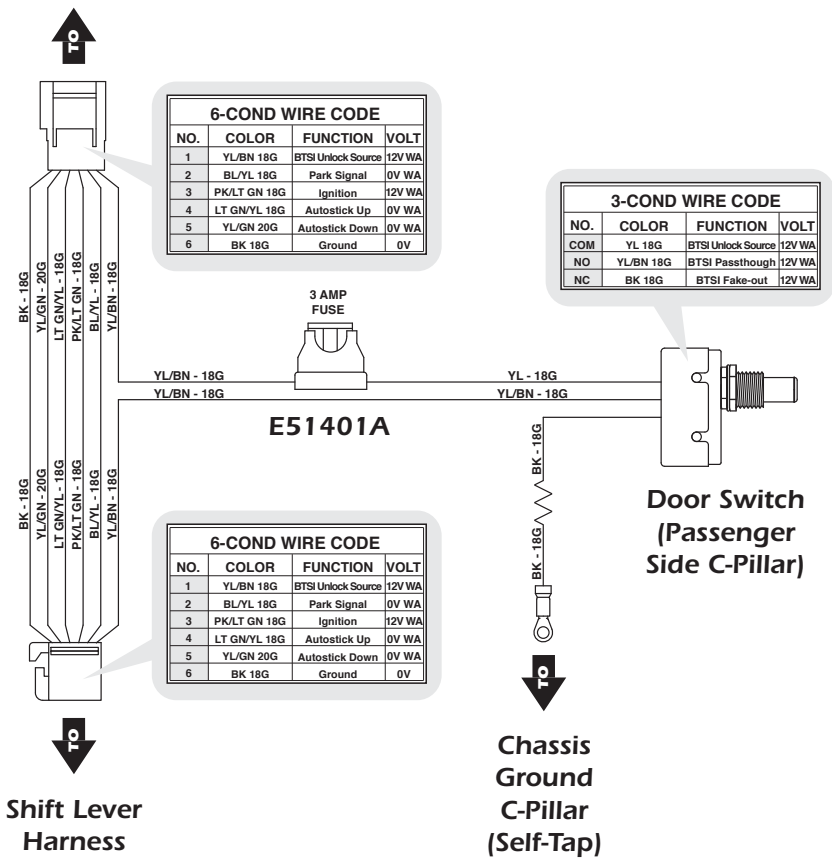
VOLTAGE NOTES

All voltage are in respect to ground.

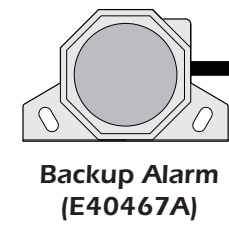
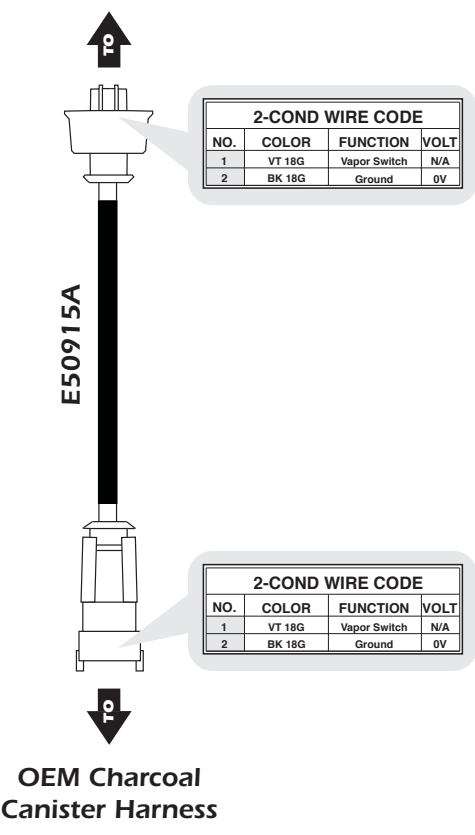
C = Constant
WA = When Active



Shift Lever Harness



OEM Charcoal Canister



Backup Alarm (E40467A)

DRAWING NOTES

Junctions only occur at intersections with junction symbols (⊕). All other intersections are wire crossings without junctions!



BLANK for LAYOUT

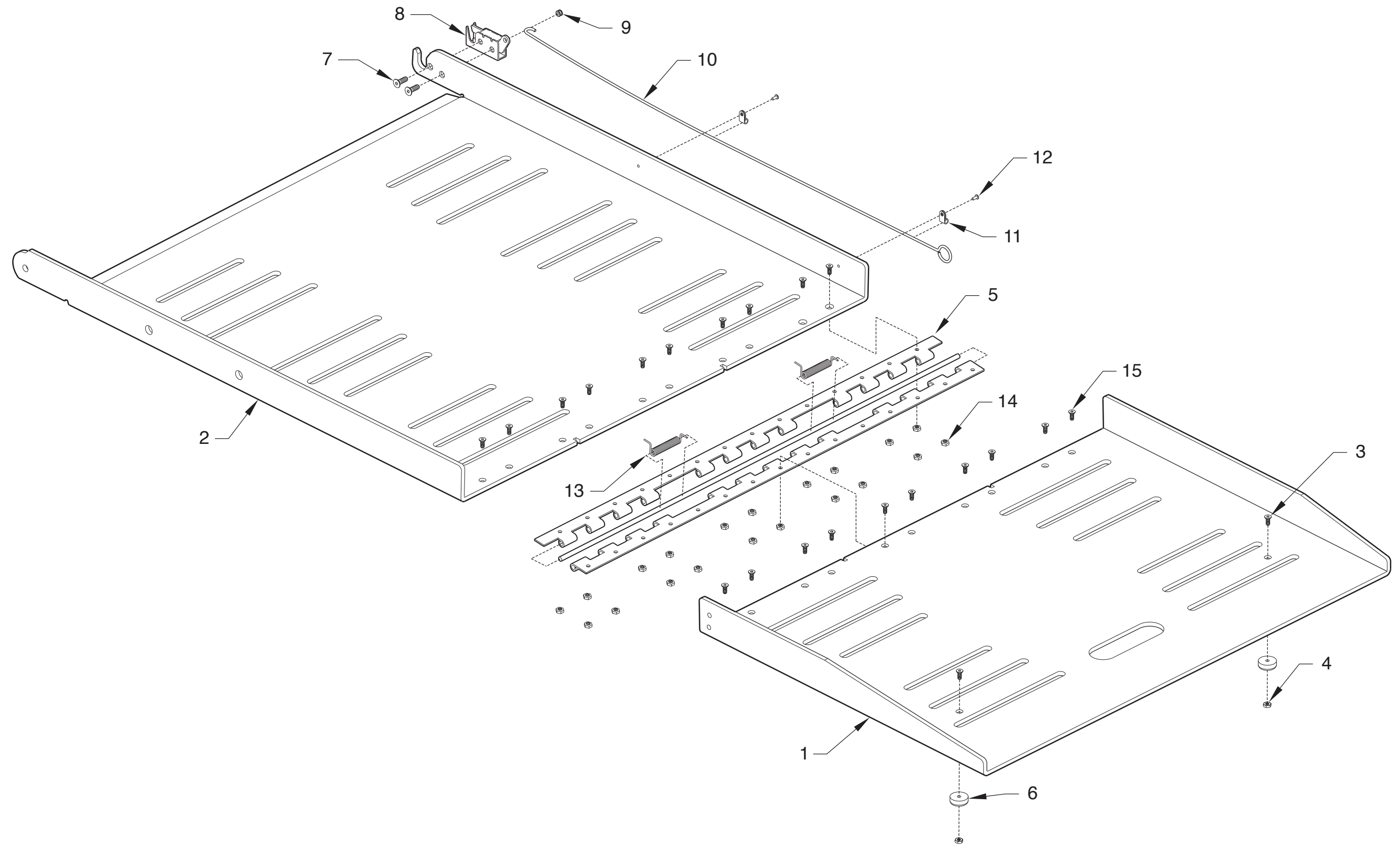
REPLACEMENT PARTS

Parts List - Manual Swing Out Ramp - Platform Assembly

Item	Qty.	Description	Part Number
1	1	Ramp, Extension - 30"	E41503??-08
2	1	Ramp, Base - 30" Manual / 2008 RT	E51502??-04
3	2	Screw, #10-32 x 1/2 - Auto Black	17192P
4	2	Nut, #10-32 with Lockwasher - Auto Black	18349
5	1	Hinge, Knuckles Cut Out - 30" Manual Ramp	51554
6	2	Bumper, Rubber Recess - 31/32 OD	10950
7	2	Screw, 1/4-20 x 3/4 - Auto Black	18708
8	1	Latch, Ramp - 29" Swing Out	51652
9	1	Grommet, 5/32 Hole - 7/16 x 1/4 Groove - Rubber	29426
10	1	Latch, Pull Wire - Auto Swing Ramp	E42131-03
11	2	Clamp, 3/16 ID - Nylon Loop - Black	28326
12	2	Rivet, Pop - SD43BS - 1/8" - Auto Black	12954
13	2	Spring, Torsion .406 OD x .065 WD x 1.85 LG	51570
14	20	Nut, 10-32 Hex Center Lock - Auto Black	34290BK
15	20	Screw, #10-32 x 5/8 FHSC - Auto Black - Patched	32954P

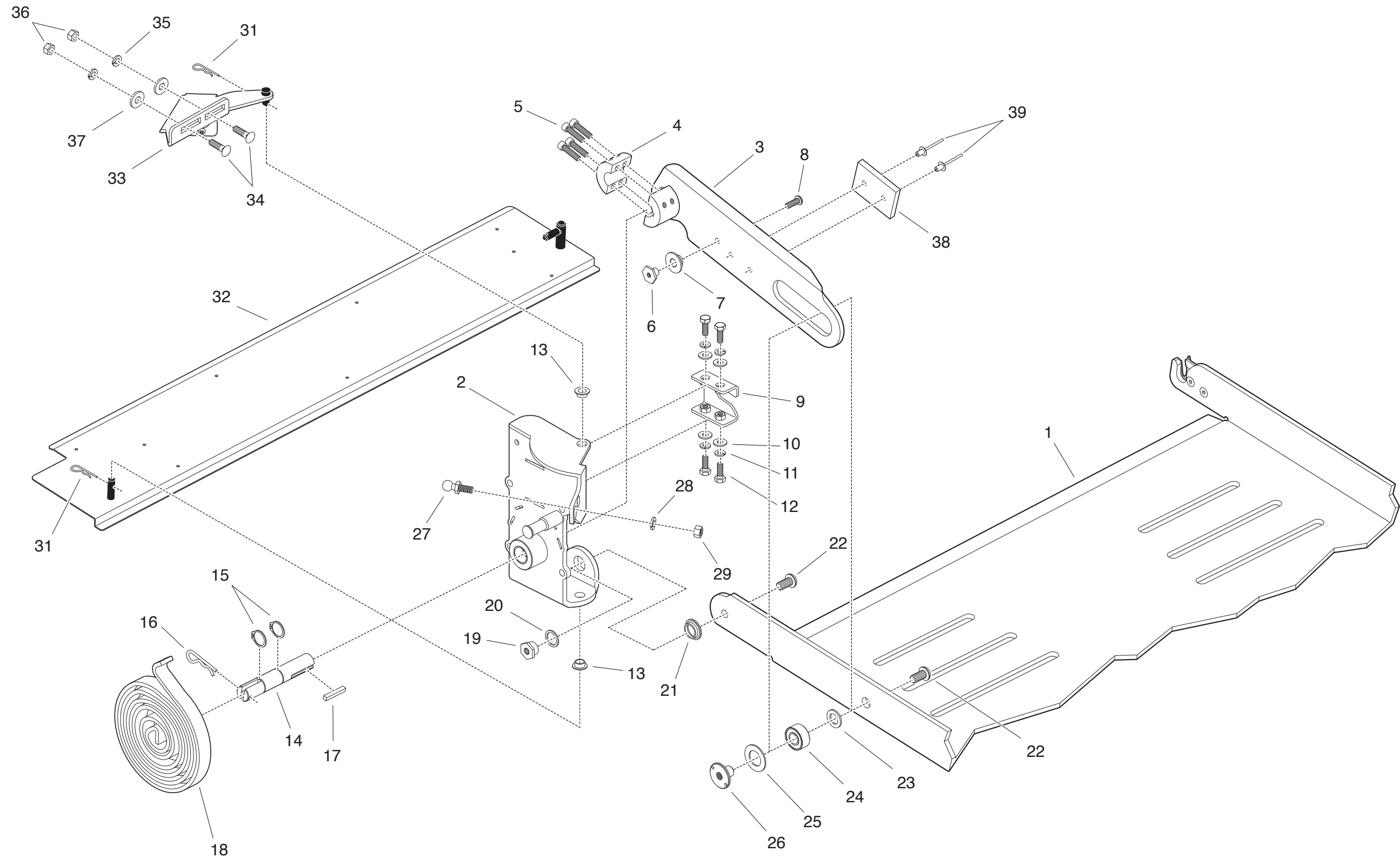
?? represents color.

Explored View - Manual Swing Out Ramp - Platform Assembly



Unfold for:
Explored View
Manual Swing Out Ramp
Platform Assembly

Explored View - Manual Swing Out Ramp - Ramp Threshold, Arm & Spring Assembly



REPLACEMENT PARTS

Part List - Manual Swing Out Ramp - Ramp Threshold, Arm & Spring Assembly

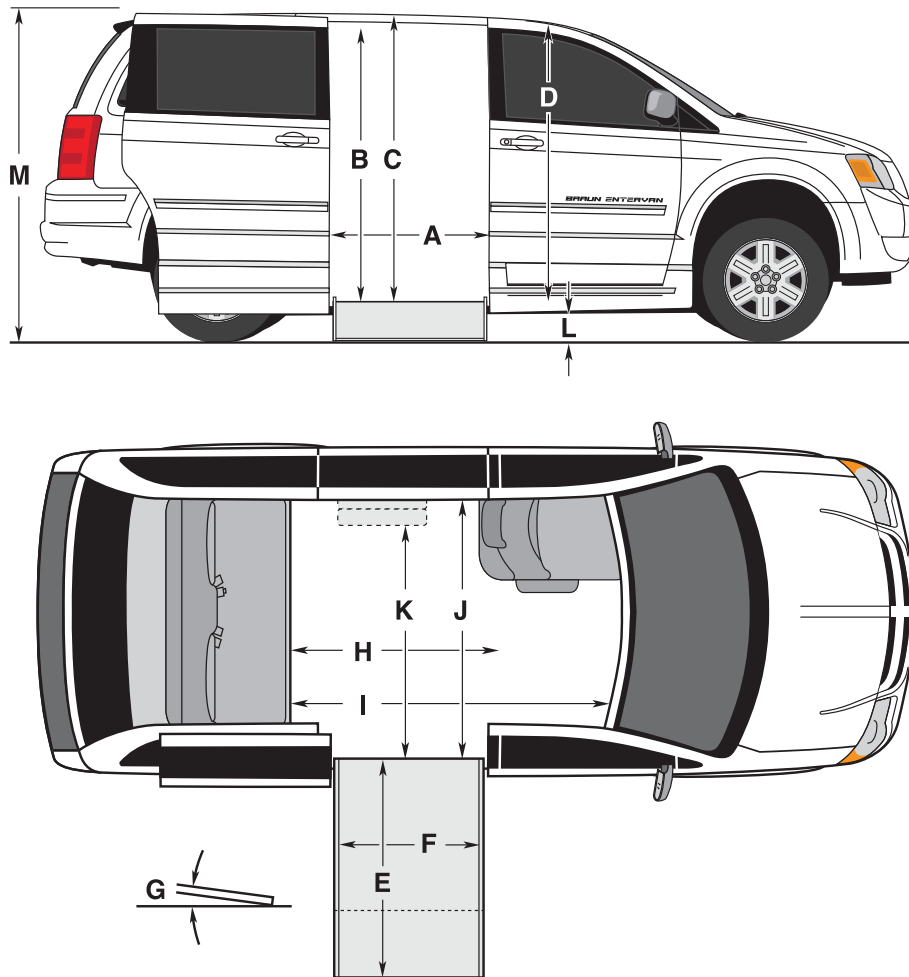
Item	Qty.	Description	Part Number
1	1	Assembly, Ramp Base & Extension - 30" Manual Chrysler Swing	E51519??A3004
2	1	Weldment, Main Ramp Housing - Manual	E41515WBK-04
3	1	Weldment, Arm - Ramp Drive - 30" Manual	E41505WBK-03
4	1	Collar, Split - 3/4" Shaft Ramp Motor Inner - Black	52565-2905BK
5	4	Screw, 1/4-20 x 1" - Socket Head Cap	24221
6	1	Bolt, Latch Support - 29" Ramp	51541-2905
7	1	Pin, Ramp Support - 29" Ramp	51815-2905
8	1	Bolt - 1/4-20 x 3/4" BHCS Nylock	25371
9	1	Weldment, Bracket - Ramp Latch Catch - Adjustable	E41510WBK
10	4	Washer, 1/4" Flat - Auto Black	10062
11	4	Washer, 1/4" Lock - Auto Black	10067
12	4	Bolt, 1/4-20 x 3/4 - Grade 5 - Hex - Auto Black	10970
13	2	Bearing, Plastic Flange - 3/8 ID x 1/4"	24028
14	1	Shaft, 30" Manual Ramp	E41507
15	2	Ring, 3/4 Snap - Auto Black	18657
16	1	Cotter, Hairpin - 1.938 Length - 0.5 Shaft	18832
17	1	Key, 3/16 x 3/16 x 1-1/4"	11002
18	1	Spring, Power - Clock - Manual Ramp	28258
19	1	Pivot Pin, Bushing - EV Ramp - 2905	52571-2905
20	1	Washer, 0.63 x 0.8 x 0.06 Nylon 10	83584
21	1	Bearing, Flange - 5/8" x 1/4" - 10FDU04	28435
22	2	Bolt, 3/8-16 x 3/4" FLBHSCS - Grade 8	25171
23	1	Washer, 0.519 ID x 0.876 OD x 0.074	12621
24	1	Bearing, 1/2 ID x 1-1/8 OD - Ball	21371
25	1	Washer, UHMW 1.500 OD x 0.76 ID x 0.062	29680
26	1	Retainer, Bearing	21451-03
27	1	Ball Stud, 13mm - 5/16-18 Male (Gas Spring)	12611
28	1	Washer, 5/16" Lock - Auto Black	10068
29	1	Nut, 5/16-18 Hex - Auto Black	10058
30*	0.0001	Loctite, Blue #242 - General Purpose	18822
31	2	Clip, Hairpin - 5/16 Diameter Shaft	84382
32	1	Weldment, Ramp Threshold - Manual / Manual	E51255W??
33	1	Assembly, Bracket - C-Pillar Mount - Manual Ramp - 2008 RT	E51257A-08
34	2	Bolt, Carriage 5/16-18 x 1"	15572
35	2	Washer, 5/16" Lock - Auto Black	10068
36	2	Nut, 5/16-18 Hex - Auto Black	10058
37	2	Washer, 5/16 Flat	10063
38	1	Spacer, Ramp Arm - Manual - Swing	E50964
39	2	Rivet, Pop - SD64BS - 3/16" - 0.13 / 0.25 - Auto Black	11513

* Item not shown

?? represents color.

DIMENSIONS

Dimensions - 2008 & Up Chrysler Conversion - Public Use



All dimensions are for reference only.

Foldout Ramp

Door Opening Usable Width (Slide Door)	A	31-1/2"
Door Opening Usable Height (Slide Door)	B	56-1/4"
Interior Height at Center of Van*	C	61"
Interior Height at Driver and Passenger Position*	D	60"
Ramp Length	E	52"
Ramp Width (Usable Clear Opening)	F	30"
Ramp Angle (Unloaded)	G	12.5°
Interior Floor Length (Behind Front Seats)	H	57"
Overall Interior Floor Length (Flat Area)	I	86"
Interior Width at B Pillars	J	62-1/2"
Width - Ramp to Optional 2-Passenger Seat (Folded)	K	49-3/4"
¹ Ground Clearance (Unloaded) - ² Loaded @ 1200 lbs	L	¹ 6-1/4" - ² 5"
Overall Vehicle Height (Unloaded)	M	74"

Due to manufacturing tolerances both with the OEM vehicle and the conversion components, all dimensions may vary slightly from those shown.

* Deduct 3" off of Interior Height for Applications with Overhead DVD/Rear Heat & AC/Rail System

"Providing Access to the World"®



**Over 300 Braun
Dealers Worldwide**

 **THE BRAUN
CORPORATION**
"Providing Access to the World"



International Corporate Hdqrs: P.O. Box 310 Winamac, IN 46996 USA
1-800-THE LIFT® (574) 946-6153 FAX: (574) 946-4670



35231 Rev A
January 2010

International Corporate Hdqrs: P.O. Box 310 Winamac, IN 46996 USA
1-800-THE LIFT® (574) 946-6153 FAX: (574) 946-4670
braunmobility.com™ Patent #6,825,628 B2 entervan.com™

All illustrations, descriptions and specifications in this manual are based on the latest product information available at the time of publication. The Braun Corporation reserves the right to make changes at any time without notice.