

# Maintenance and Service Manual

## Wheelchair-Accessible Lowered Floor Conversion Public Use

featuring 2011 and Newer

**Dodge Minivans**



**! WARNING**



Read manual before servicing. Failure to do so may result in serious bodily injury and/or property damage.

# INTRODUCTION

## Introduction

### **WARNING**

**Maintenance, lubrication, troubleshooting and service procedures must be performed as specified by an authorized service technician. Failure to do so may result in serious bodily injury and/or property damage.**

Braun® lowered floor minivan conversions are designed to provide mobility independence for wheelchair passengers.

Familiarity with proper operation and maintenance procedures will help ensure safe, troublefree operation.

This manual addresses public use conversion standard features as well as options (as available). Safety precautions, maintenance and troubleshoot-

ing details are provided. A Repair Parts section with exploded views and corresponding parts lists is also provided.

Refer to the information applicable for the conversion you are servicing. Disregard information that does not apply.

Contact The Braun Corporation at 1-800-THE LIFT if any of this information is not understood.

## Warranty and Return Authorization

Refer to the Limited Warranty Booklet for detailed terms and provisions. When processing any warranty claims (parts, repairs, etc.), all requests must be processed through the Braun Corporation Product Support

Department. Product Support will issue a Return Material Authorization (RMA) number and detail the procedures required for processing returns and/or authorizing credit.

The last eight digits of the vehicle identification number (VIN) must be provided when filing a warranty claim or ordering parts.

<b>Safety Precautions</b> .....	2	<b>Repair Parts</b>	
<b>Towing</b> .....	2	Parts List - Manual Swing Out	
<b>Maintenance and Service</b>		Ramp - Platform Assembly .....	18
Maintenance and Service Requirements .....	3	Exploded View - Manual Swing Out	
Preventative Maintenance .....	4	Ramp - Platform Assembly .....	19A, 20A
Maintenance and Lubrication Schedule .....	4-6	Exploded View - Manual Swing Out	
<b>Troubleshooting Diagnosis Chart</b> .....	7-10	Ramp - Ramp Threshold, Arm &	
<b>Below Floor Obstructions</b> .....	11	Spring Assembly .....	19B, 20B
<b>Auxiliary Power Supply</b> .....	12	Parts List - Manual Swing Out Ramp - Ramp	
<b>Wiring Diagrams</b>		Threshold, Arm & Spring Assembly .....	21
Wiring Diagram - 2011 and Up Dodge		<b>Dimensions</b> .....	22
Minivan Conversion - Public Use			
Driver Seat .....	13A, 14A		
Wiring Diagram - 2011 and Up Dodge			
Minivan Conversion - Public Use			
Passenger Seat .....	13B, 14B		
Wiring Diagram - Fuse Panel, Lighting, Alarm,			
Door Switch & Canister Harness .....	15B, 16B		

# SAFETY PRECAUTIONS

## Safety Precautions

### **⚠️ WARNING**

Read this manual, the conversion's operator's manual and supplements before performing operation, maintenance or service procedures. Failure to do so may result in serious bodily injury and/or property damage.

- ⚠️ WARNING** Maintenance and service procedures must be performed only by authorized service personnel.
- ⚠️ WARNING** Perform maintenance and lubrication procedures exactly as outlined in the Maintenance and Lubrication Schedule contained in this manual.
- ⚠️ WARNING** Perform troubleshooting and service procedures as outlined in this manual and/or service bulletins supplied with replacement parts.
- ⚠️ WARNING** Replacement parts must be Braun authorized replacements.
- ⚠️ WARNING** Do not use accessory devices not authorized by The Braun Corporation.

- ⚠️ WARNING** Keep clear of area in which ramp operates.
- ⚠️ WARNING** Never modify (alter) a Braun Corporation lowered floor minivan conversion.
- ⚠️ WARNING** Do not install a raised top on a Braun Corporation lowered floor minivan conversion.
- ⚠️ WARNING** Use of a Braun Corporation lowered floor minivan conversion for towing is prohibited.
- ⚠️ WARNING** Failure to follow these safety precautions may result in serious bodily injury and/or property damage.

## Towing

### Towing with a Lowered Floor Conversion

Use of a lowered floor conversion vehicle for towing is prohibited.

### Transporting a Lowered Floor Conversion

In case of service, The Braun Corporation recommends that lowered floor conversion vehicles be transported on a trailer rather than towed with one set of wheels suspended and the other set of wheels remaining in road contact.



**Trailer Transport**

### **Maintenance and Service Requirements**

Braun lowered floor minivan conversions must be maintained and serviced by a Braun authorized service representative who has attended and been certified by The Braun Corporation Sales and Service School for Braun Mobility Products.

Read and become familiar with the operating procedures outlined in the applicable operator's manual and the maintenance and troubleshooting information contained in this manual before beginning operation, maintenance or service procedures.

Contact The Braun Corporation at 1-800-THE LIFT® if any of this information is not understood.

# MAINTENANCE and SERVICE

## Preventive Maintenance

Maintenance is necessary to ensure safe and trouble free conversion operation. Encourage the consumer to perform preventive maintenance procedures. General preventive maintenance consisting of inspections along with cleaning procedures should be a part of the consumers routine.

Keeping the passenger slide door lower track pan free of debris, ice and snow is one of the most effective preventive maintenance practices to exercise. Regular preventive maintenance procedures will increase the service life of the conversion, as well as enhancing safety.

The consumer should inspect and clean frequently and routinely (minimum four weeks or 100 cycle intervals).

Note: A Preventive Maintenance section is provided in the operator's manual.

## Maintenance and Lubrication Schedule

Normal vehicle maintenance must be performed as outlined in the OEM-supplied owner's manual. This maintenance is not the responsibility of The Braun Corporation.

The maintenance and lubrication procedures outlined in this schedule must be performed at the recommended scheduled intervals by a Braun authorized service representative.

Clean specified components and the surrounding area before applying lubricants. When replacing lubricated components, be sure to lubricate during installation procedures.

A "dri-film" style of light oil should be applied where Light Oil is called out (goes on wet and then dries). Lubricants of this type are available that do not attract dust and other debris.

Use of improper lubricants can attract dirt or other contaminants which could result in wear or damage to components. Avoid lubricants that can leave stains.

Some lubricants referenced in the schedule are available from The Braun Corporation (part numbers provided where specified).

Inspection, lubrication and maintenance procedures should be repeated at 3 month intervals following the scheduled 6 month maintenance. These intervals are a general guideline and will vary according to frequency of use and conditions. Exposure to severe conditions (weather, environment, contamination, heavy usage, etc.) may require inspection and maintenance procedures to be performed more often than specified.

Discontinue use immediately if maintenance and lubrication procedures are not properly performed, or if there is any sign of wear, damage, improper operation or any abnormal condition. Contact your sales representative or call The Braun Corporation at 1-800-THE LIFT®. One of our national Product Support representatives will direct you to an authorized service technician who will inspect your conversion.

### WARNING

**Maintenance and lubrication procedures must be performed as specified by an authorized service technician. Failure to do so may result in serious bodily injury and/or property damage.**

## Maintenance and Lubrication Schedule

<b>3 Months</b>	<b>Manual Ramp</b>	
	Outboard ramp extension hinge and fasteners	Clean and lubricate with Light Oil. Resecure or replace fasteners as needed
	Inspect ramp inboard pivot points (bolts screws and bushings/bearings) for positive securement, wear or damage	Clean and lubricate with Light Oil. Tighten, replace or correct as needed
	Inspect ramp fold pickup bearing for positive securement, alignment, wear or other damage	Replace or correct as needed. If bearing retaining screw is not secure or is removed for service, apply Blue #242 Thread Locker Loctite to retaining screw and tighten.
	Inspect ramp fold arm for positive securement, alignment, wear or other damage	Tighten, replace or correct as needed
	Inspect ramp fold arm bearing slot for excessive wear or damage	Replace if needed
	Inspect ramp floor mounting hardware for securement (loose or missing)	Resecure, replace or correct as needed
	<b>General Items</b>	
	Lower slide door track	Inspect for debris/obstructions and clean (vacuum or blow out debris using compressor)
	Wheelchair and occupant restraint belts and tie down track	Inspect for any defects such as cuts, fraying or any malfunction of belt, buckle or securement hardware. Clean dirt and debris from tie down track. Replace immediately if damaged. Refer to inspection and maintenance instructions supplied by belt manufacturer.
Inspect removable seat bases for proper engagement of latching mechanisms	Replace or correct as needed	

# MAINTENANCE and SERVICE

## Maintenance and Lubrication Schedule

<b>6 Months</b>	<p><b>Manual Ramp</b></p> <p style="text-align: right; border: 1px solid black; padding: 2px;">Perform all procedures listed in previous section also</p> <p>Remove interior cover and inspect:</p> <ul style="list-style-type: none"> <li>Top pivot (wall mounting) bracket mounting bolts for securement (loose or missing)</li> <li>Main (spring) housing mounting bolts for securement (loose or missing)</li> <li>Ramp fold arm securement (collar and mounting screws)</li> <li>Torsion spring securement hairpin cotter, external snap ring(s) or key (loose or missing)</li> </ul> <p><b>Inspect Power Source:</b> Vehicle battery, 50 ampere fuse, vehicle engine compartment fuse block and center console fuse block.</p> <p><b>Swing Out Ramp</b></p> <p>Inspect:</p> <ul style="list-style-type: none"> <li>Latch for proper operation (apply Light Oil)</li> <li>Latch mounting hardware for positive securement (loose or missing mounting hardware)</li> <li>Latch pin for positive securement, wear, misalignment, or other damage</li> <li>Missing or damaged ramp top pivot bracket securement cotter pin (hairpin cotter or "R" clip)</li> <li>Top and/or bottom ramp pivot points (axles and/or bearing surfaces) for deformation, wear or other damage</li> <li>Bottom ramp pivot pin (axle) plastic flanged bearing damaged or missing.</li> <li>Latch release rod for positive securement, alignment, wear, or other damage</li> </ul>	<p>Resecure, replace damaged parts or otherwise correct as needed. See applicable Manual Ramp exploded views on pages 19A-20B.</p> <p>Resecure, repair or replace</p> <p>Realign, resecure, tighten, lubricate, replace damaged parts or otherwise correct as needed.</p>
	<p><b>Consecutive 3 Month Intervals</b></p>	<p>Repeat all previously listed inspection, lubrication and maintenance procedures at 3 month intervals.</p>

## Troubleshooting Diagnosis Chart

### **⚠ WARNING**

Troubleshooting and repair procedures must be performed as specified by an authorized service technician only. Failure to do so may result in serious bodily injury and/or property damage.

Operation should be discontinued immediately if a conversion problem occurs. Repairs should not be attempted by the consumer. Contact the sales representative or call The Braun Corporation at 1-800-THE LIFT®. One of our national Product Support representatives will direct you to an authorized service technician who will inspect your vehicle.

The cause of the problem can be determined by locating the function and related symptom in the Troubleshooting Diagnosis

Charts. The specific cause and remedy can then be determined by process of elimination. Wiring Diagrams are provided to aid in troubleshooting.

A Repair Parts section with exploded views and corresponding parts lists is also provided. Correct the problem if possible. If the problem continues, contact The Braun Corporation.

FUNCTION	SYMPTOM	POSSIBLE CAUSE	REMEDY
<b>1.00 DOOR (OPEN)</b>	<b>1.10 Faulty Open Operation</b>	1.11 Misalignment, deformation, wear or other damaged to lower slide door track 1.12 Misalignment, deformation, wear or other damage to door, lower door extension, or door jamb components 1.13 Obstruction in lower door track 1.14 Mechanical binding	Realign, tighten, replace damaged parts or otherwise correct as needed Realign, tighten, replace damaged parts or otherwise correct as needed Remove obstruction Correct
	<b>1.20 Door Does Not Open Fully</b>	1.21 See 1.13 1.22 Door doesn't engage OEM full open position hold latch	Correct

# TROUBLESHOOTING

FUNCTION	SYMPTOM	POSSIBLE CAUSE	REMEDY
----------	---------	----------------	--------

<b>2.00 RAMP DEPLOY</b>	<b>2.10 No Deploy Operation</b>	2.11 Loose, damaged or missing fold arm securement collar/coupling and/or screws	Tighten, replace or otherwise correct as needed
	<b>2.20 Ramp Contacts Door</b>	2.21 Door not fully open	Open door or see 1.20
	<b>2.30 Faulty Deploy Operation</b>	2.31 Misalignment or damage to: <ul style="list-style-type: none"> <li>• Ramp fold bearing</li> <li>• Ramp fold arm</li> <li>• Ramp fold arm bearing slot</li> <li>• Ramp pivot points or hinge(s)</li> </ul> 2.32 Mechanical binding 2.33 Lack of lubrication	Realign, tighten, replace damaged parts or otherwise correct as needed  Correct Lubricate - See Maintenance and Lubrication Schedule
	<b>2.40 Faulty Ramp Extension Unfold (Deploy)</b>	2.41 Lack of lubrication  2.42 Ramp extension hinge damage	Lubricate - See Maintenance and Lubrication Schedule  Correct or replace as needed

<b>3.00 FOLDOUT RAMP STOW</b>	<b>3.10 No Stow Operation</b>	3.11 See 2.10	
	<b>3.20 Faulty Stow Operation</b>	4.21 Fold arm latch catch (support/stop) out of adjustment, loose or otherwise damaged 4.22 See 2.10, 2.30 and 2.40	Adjust tighten or otherwise correct as needed

<b>4.00 DOOR (CLOSE)</b>	<b>4.10 Faulty Operation</b>	4.11 See 1.10	
	<b>4.20 Door Does Not Close Fully</b>	4.21 See 1.10  4.22 Ramp obstructing door	Adjust ramp latch catch (support/stop) for more travel or otherwise correct as needed

## TROUBLESHOOTING

FUNCTION	SYMPTOM	POSSIBLE CAUSE	REMEDY
<b>5.00 SWING OUT RAMP SYSTEM (if equipped)</b>	<b>5.10 No Release Operation</b>	5.11 Release rod broken, disconnected or otherwise damaged 5.12 Faulty swing out ramp latch (will not disengage)	Replace, attach or otherwise correct  Replace latch
	<b>5.20 Faulty Release Operation</b>	5.21 Loose, worn or otherwise damaged swing out ramp latch 5.22 Missing, loose, worn, bent, misaligned or otherwise damaged swing out ramp latch pin 5.23 Mechanical binding 5.24 Lack of lubrication	Tighten, replace or otherwise correct as needed Tighten, replace or otherwise correct as needed  Correct as needed Lubricate with Light Oil
	<b>5.30 Faulty Rotation Operation</b>	5.31 Missing plastic flanged bearing (washer) at bottom pivot point (axle) 5.32 Misalignment, deformation, wear or other damage to top and/or bottom pivot points (axles and/or bearing surfaces) 5.33 Mechanical binding	Replace  Correct as needed  Correct as needed
	<b>5.40 No Latching Operation</b>	5.41 Faulty swing out ramp latch (will not engage) 5.42 See 5.20	Replace latch
	<b>5.50 Faulty Latching Operation</b>	5.51 See 5.20 and 5.41	
	<b>6.00 NO POWER</b>	<b>6.10 No Power to Conversion Systems (Circuit Problem)</b>	6.11 Poor ground connection 6.12 Battery terminals dirty 6.13 Battery damaged 6.14 Battery discharged 6.15 12 volt source (check fuses for 12 volts)
<b>7.00 BACKUP ALARM</b>	<b>7.10 No Operation</b>	7.11 See 6.00 7.12 Faulty alarm 7.13 Backup alarm harness disconnected or damaged	Replace alarm Connect, repair or replace

# TROUBLESHOOTING

FUNCTION	SYMPTOM	POSSIBLE CAUSE	REMEDY
<b>8.00 PARK INTERLOCK</b>	<b>8.10 No Interlock Operation</b>	8.11 See 6.00 8.12 Park interlock (door jamb) switch harness disconnected or damaged 8.13 Park interlock (door jamb) switch out of adjustment or damaged	Connect, repair or replace  Adjust or replace
	<b>8.20 Can't Shift Out of Park</b>	8.21 Door not closed 8.22 See 8.12 and 8.13	Close door
<b>9.00 ENTRANCE LIGHTS</b>	<b>9.10 No ON Operation</b>	9.11 See 6.00 9.12 Door not open 9.13 Faulty light 9.14 Entrance light harness disconnected or damaged	Open door Replace Connect, repair or replace
	<b>9.20 No OFF Operation</b>	9.21 Door not closed 9.22 See 6.00 and 9.14	Close door

# BELOW FLOOR OBSTRUCTIONS

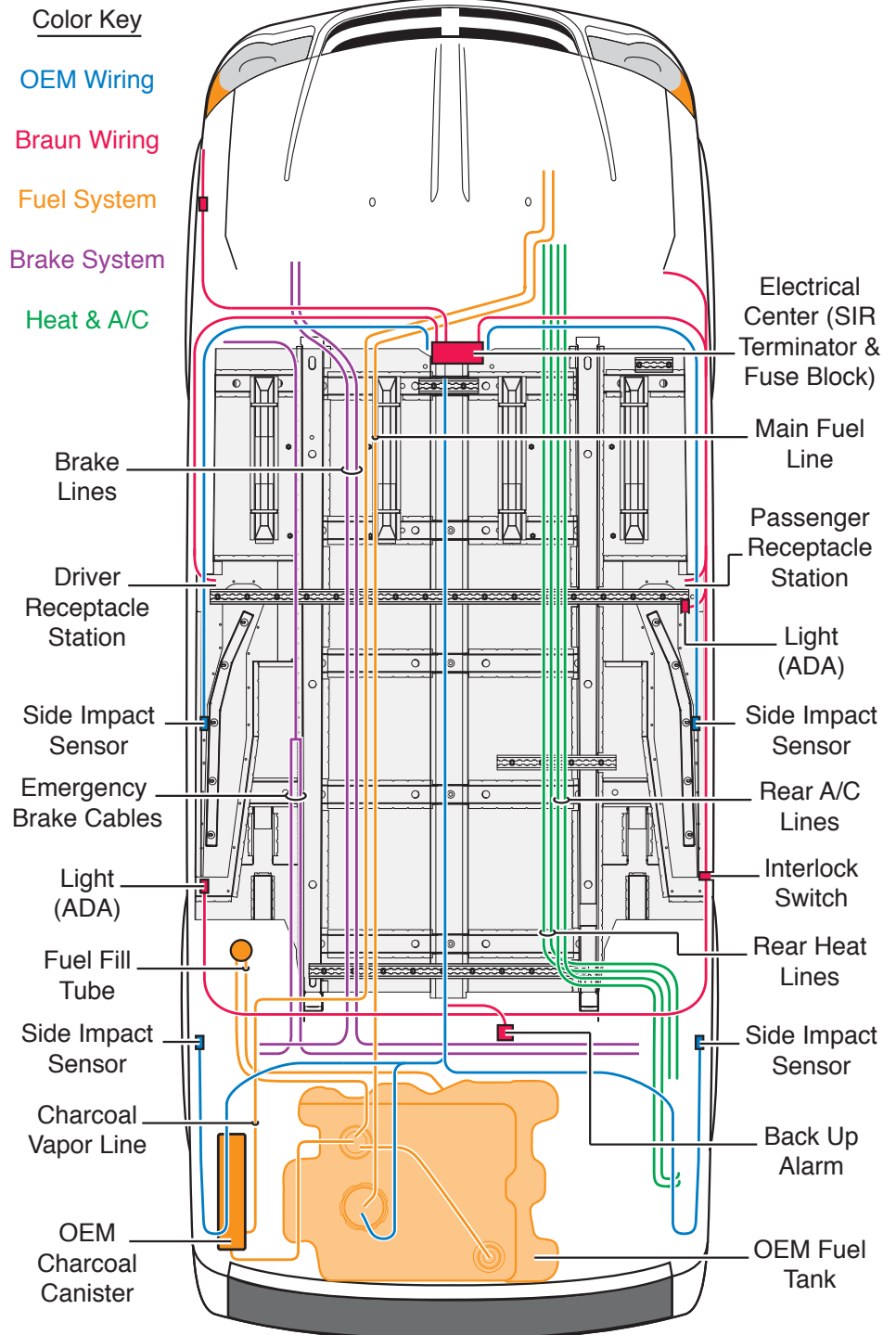
## Below Floor Obstruction Detail & Guidelines

When installing aftermarket equipment in a conversion, obstructions below the floor must be avoided. Obstructions include wiring, fuel system, brake lines, etc. Installers must be aware of these obstructions.

Refer to this illustration when installing aftermarket equipment to avoid contacting or damaging vital components under the floor.

Drilling or cutting into such obstructions may result in potential hazards as well as property damage.

Note: Some wiring harnesses shown may not be present. Avoid all harness locations.



**⚠ WARNING**

Check for obstructions such as wires, gas lines, exhaust, etc. before drilling or cutting through floor. Failure to do so may result in serious bodily injury and/or property damage.

# AUXILIARY POWER SUPPLY

## Auxiliary Power Supply

**Auxiliary Power Supply:** Do not connect auxiliary devices directly to the vehicle battery. Doing so may result in damage to electrical system and/or electronic components.

Two fuse blocks are provided

**CAUTION**

Do not connect auxiliary devices to vehicle battery. Doing so may result in damage to electrical system and/or electronic components.

as an auxiliary power source for dealer-installed auxiliary electrical device(s). See details and specifications below. The fuse blocks are located at the bottom of the center dash console.

**Below Floor Obstructions:** When installing aftermarket equipment in a conversion, obstructions below the floor must be avoided. Obstructions include wiring, fuel system, brake lines, etc. Installers must be aware of these obstructions.

Refer to the illustration on previous page to avoid contacting or damaging vital components under the floor.

**WARNING**



Risk of electrical fire! Install and electrically terminate auxiliary electrical device as specified by device manufacturer.

## Fuse Blocks

**Fuse Blocks:** Two fuse blocks are provided for use as an auxiliary power source (one Ignition fuse block and one Battery fuse block).

The Battery fuse block provides power at all times (independent of the vehicle ignition). The Ignition fuse block supplies power only when the vehicle ignition is on.

The installer is responsible for supplying the correct gauge wire and fuse for the particular device to be attached to the fuse block (as specified by the manufacturer of the device).

**Ignition Fuse Block:** The total maximum load must not exceed 30 amperes.

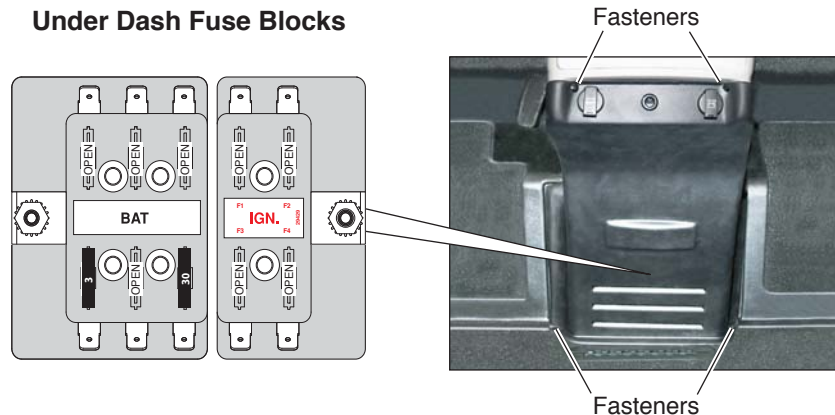
**Battery Fuse Block:** The total maximum load must not exceed 40 amperes.

Note: If installing an auxiliary electrical device that requires a power source that exceeds the specified maximum loads, an alternative power source must be provided.

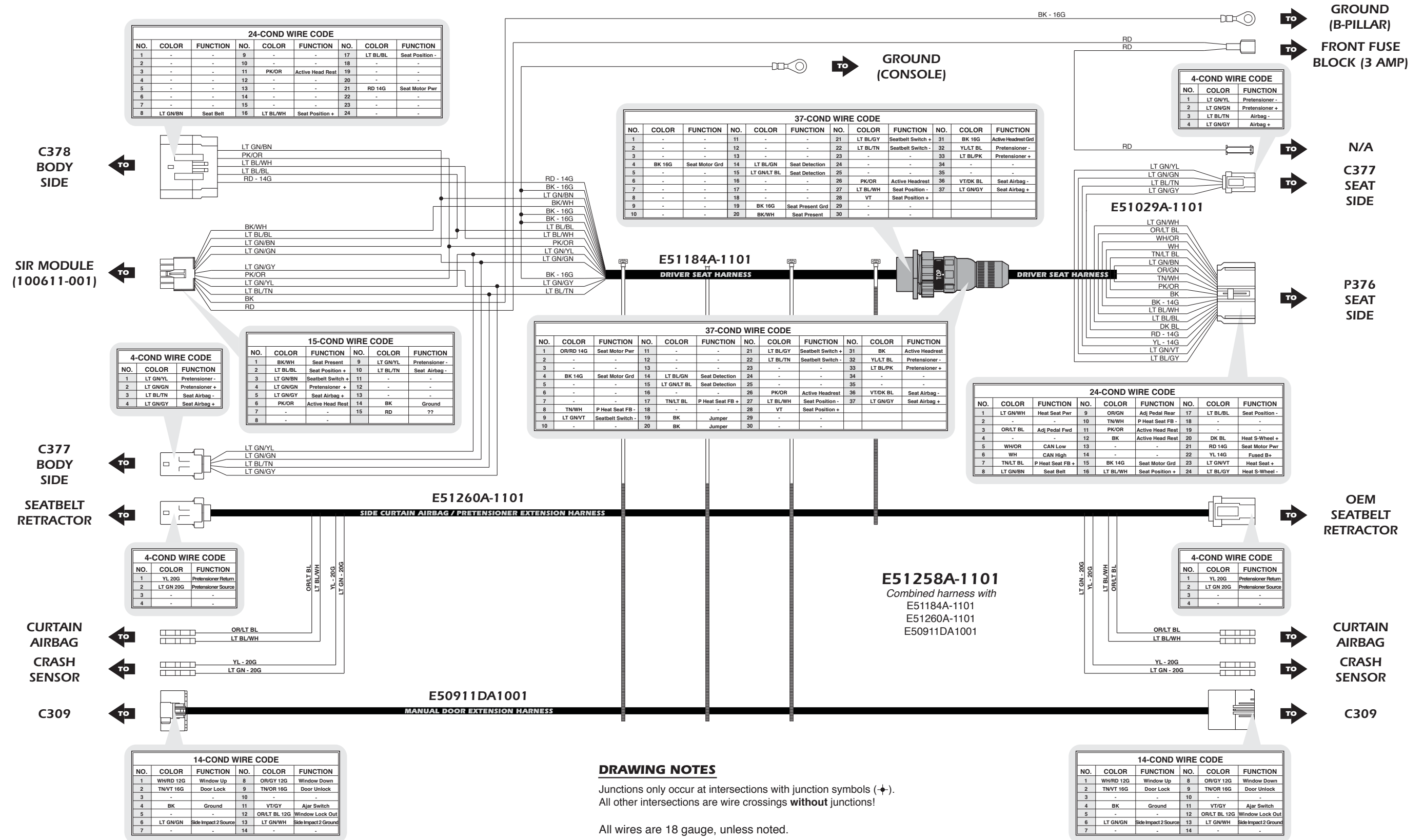
**Fuse Block Access:** The fuse blocks are located at the bottom of the center console. Remove bottom console panel (2 fasteners per side).

Note: The fuse blocks are part of an electrical assembly. Two grounding studs are also provided.

Under Dash Fuse Blocks

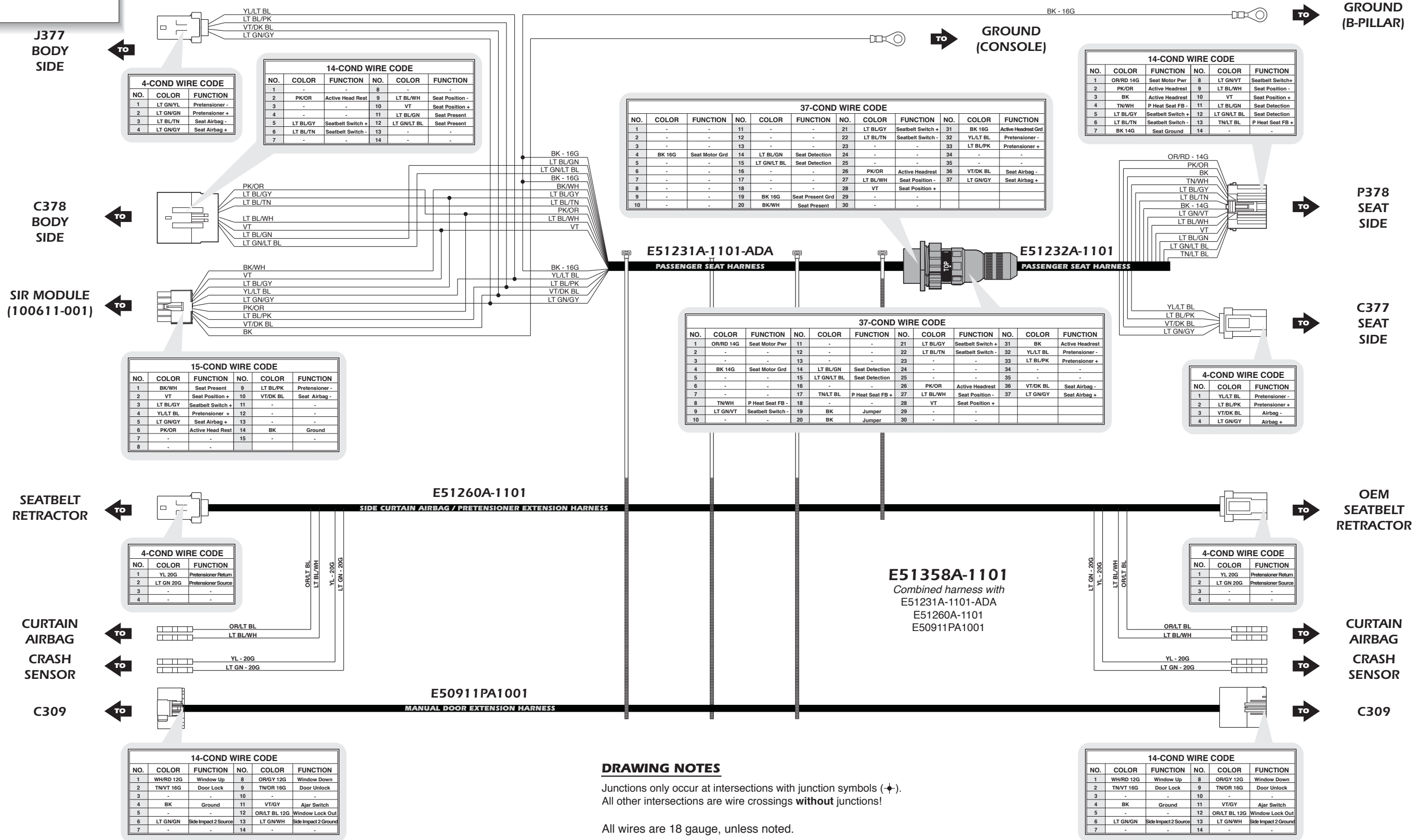


# Wiring Diagram - 2011 & Up Dodge Minivan Conversion - Public Use - Driver Seat



Unfold for:  
Wiring Diagram  
2011 & Up Dodge  
Public Use - Driver Seat

# Wiring Diagram - 2011 & Up Dodge Minivan Conversion - Public Use - Passenger Seat



### DRAWING NOTES

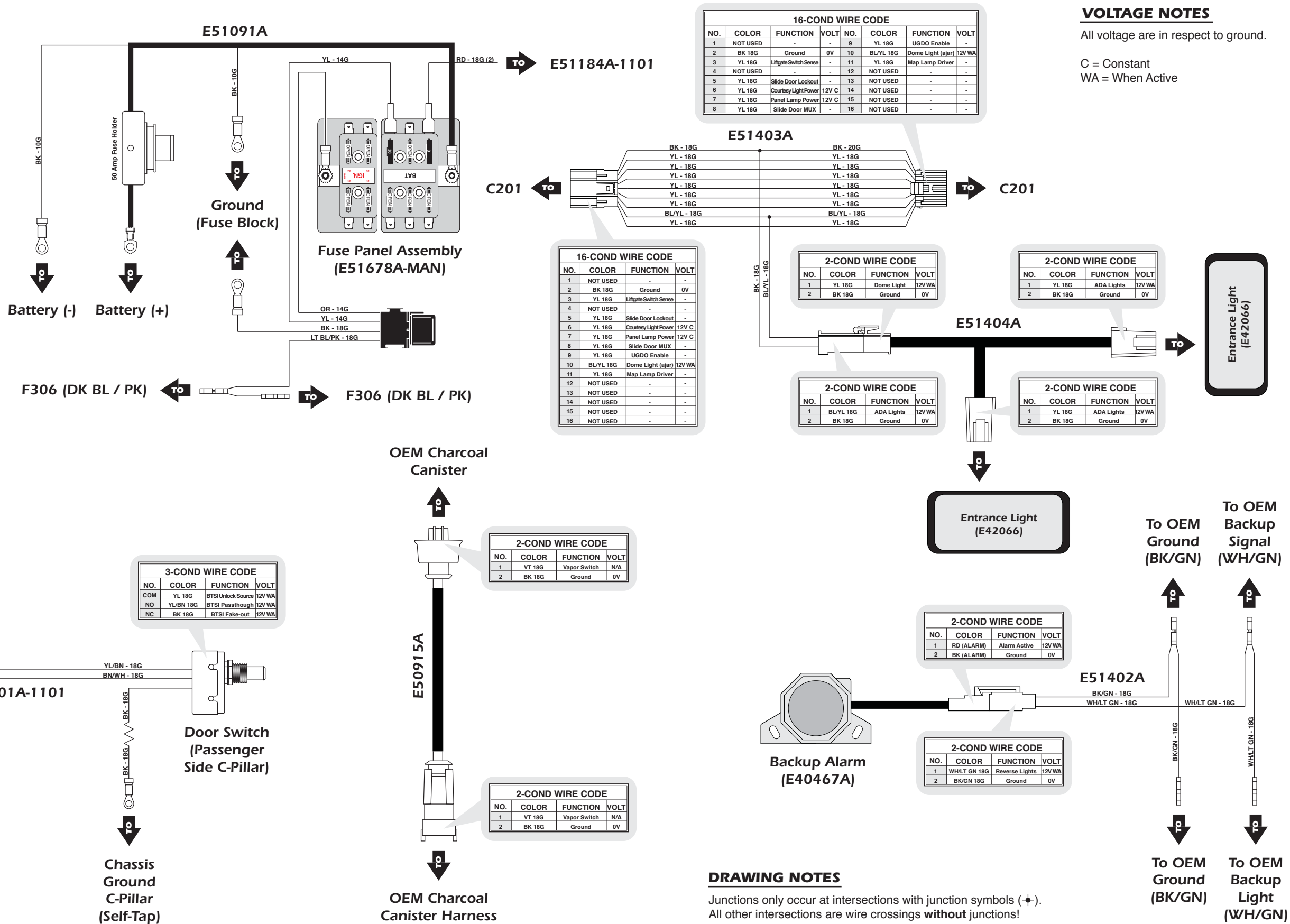
Junctions only occur at intersections with junction symbols (⊕).  
All other intersections are wire crossings **without** junctions!

All wires are 18 gauge, unless noted.



# Wiring Diagram - Fuse Panel, Lighting, Alarm, Door Switch & Canister Harness

KEY	
BK	BLACK WIRE
BL	BLUE WIRE
BN	BROWN WIRE
GN	GREEN WIRE
GY	GRAY
OR	ORANGE WIRE
PK	PINK WIRE
VT	VIOLET WIRE
RD	RED WIRE
TN	TAN WIRE
WH	WHITE WIRE
YL	YELLOW WIRE
??G	WIRE GAUGE
DK ??	DARK ?? WIRE
LT ??	LIGHT ?? WIRE



## DRAWING NOTES

Junctions only occur at intersections with junction symbols (⊕).  
All other intersections are wire crossings **without** junctions!



**BLANK for LAYOUT**

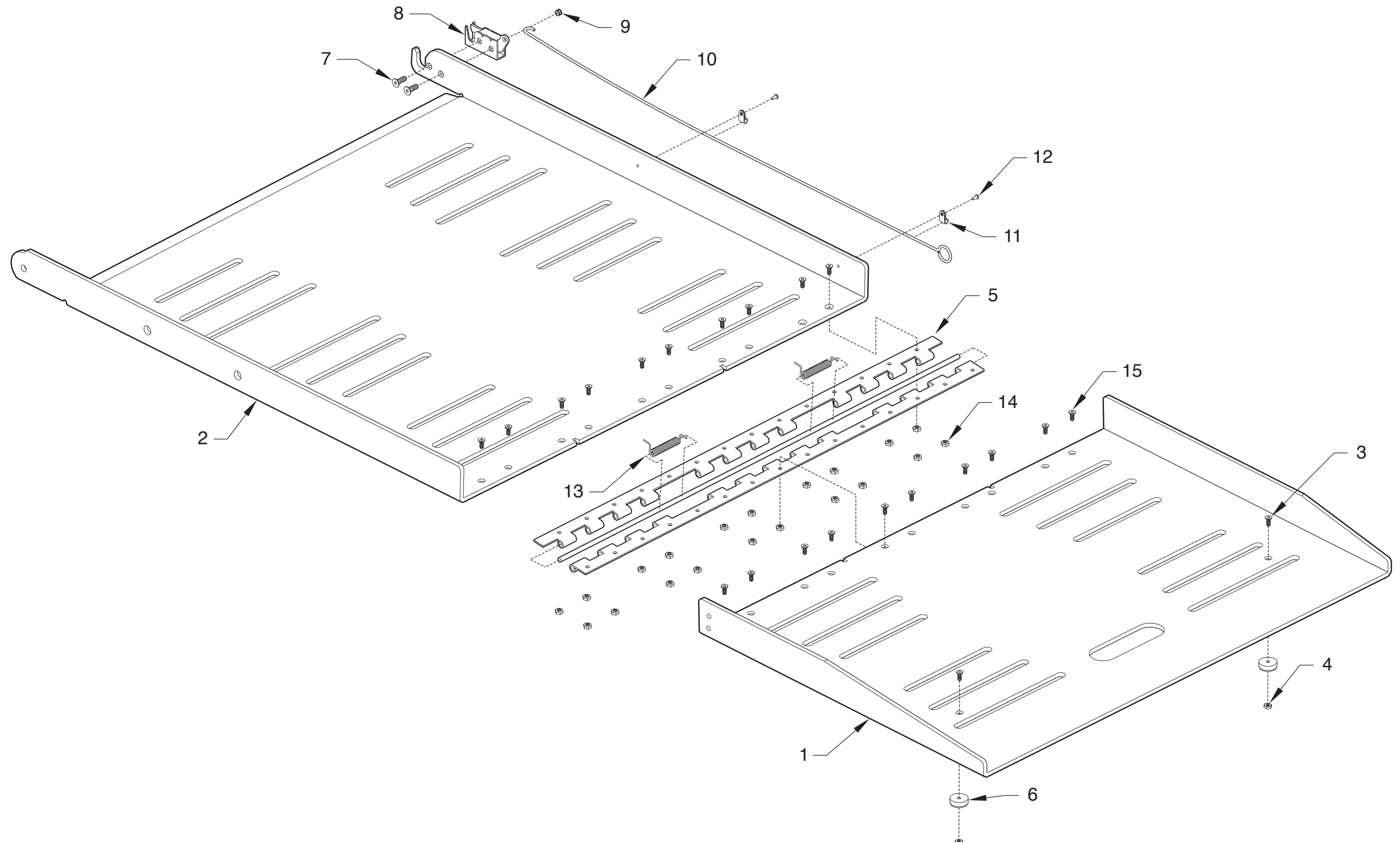
## REPLACEMENT PARTS

### Parts List - Manual Swing Out Ramp - Platform Assembly

Item	Qty.	Description	Part Number
1	1	Ramp, Extension - 30"	E41503??-08
2	1	Ramp, Base - 30" Manual / 2008 RT	E51502??-04
3	2	Screw, #10-32 x 1/2 - Auto Black	17192P
4	2	Nut, #10-32 with Lockwasher - Auto Black	18349
5	1	Hinge, Knuckles Cut Out - 30" Manual Ramp	51554
6	2	Bumper, Rubber Recess - 31/32 OD	10950
7	2	Screw, 1/4-20 x 3/4 - Auto Black	18708
8	1	Latch, Ramp - 29" Swing Out	51652
9	1	Grommet, 5/32 Hole - 7/16 x 1/4 Groove - Rubber	29426
10	1	Latch, Pull Wire - Auto Swing Ramp	E42131-03
11	2	Clamp, 3/16 ID - Nylon Loop - Black	28326
12	2	Rivet, Pop - SD43BS - 1/8" - Auto Black	12954
13	2	Spring, Torsion .406 OD x .065 WD x 1.85 LG	51570
14	20	Nut, 10-32 Hex Center Lock - Auto Black	34290BK
15	20	Screw, #10-32 x 5/8 FHSC - Auto Black - Patched	32954P

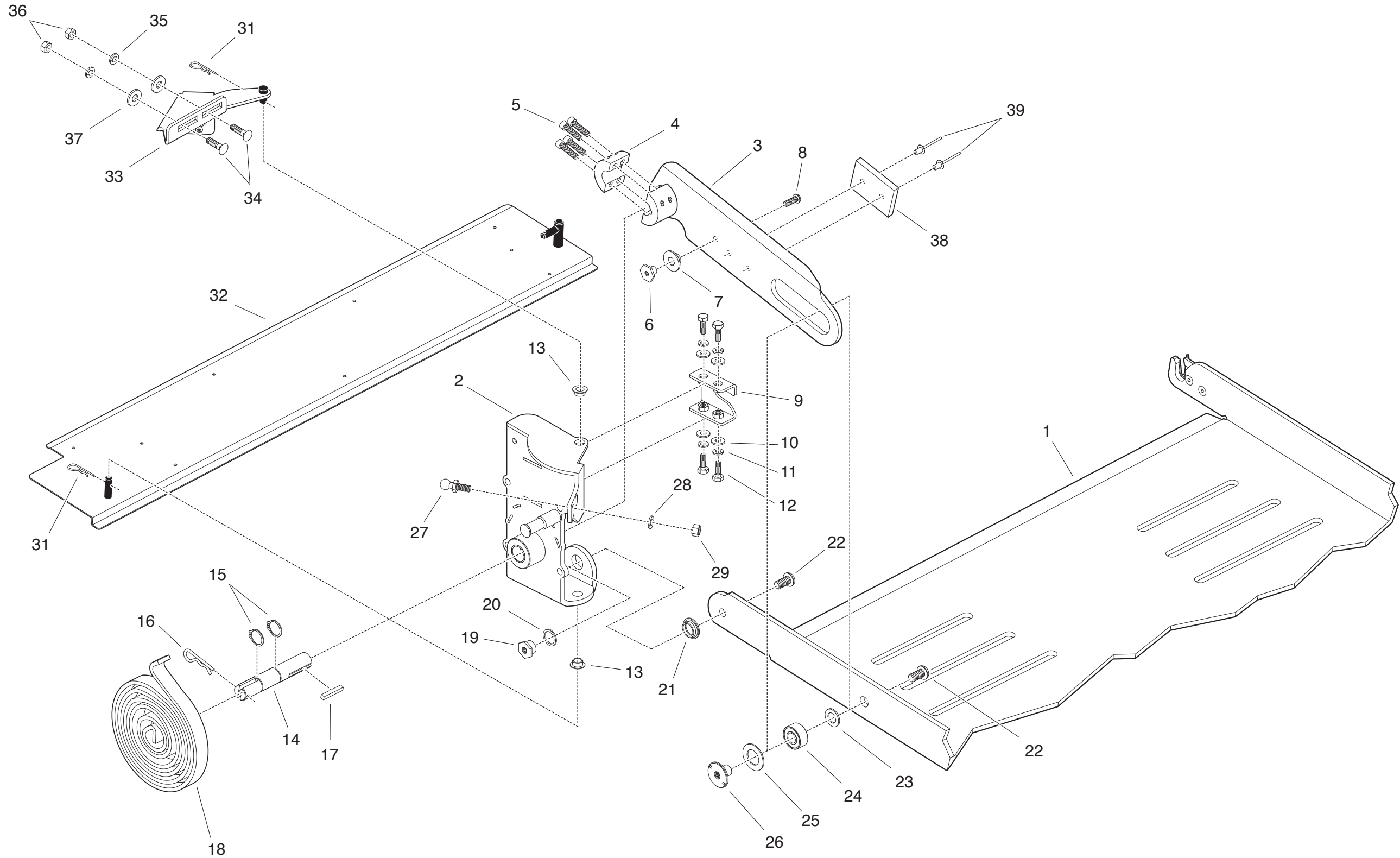
?? represents color.

**Explored View - Manual Swing Out Ramp - Platform Assembly**



Unfold for:  
Explored View  
Manual Swing Out Ramp  
Platform Assembly

# Explored View - Manual Swing Out Ramp - Ramp Threshold, Arm & Spring Assembly



## REPLACEMENT PARTS

### Part List - Manual Swing Out Ramp - Ramp Threshold, Arm & Spring Assembly

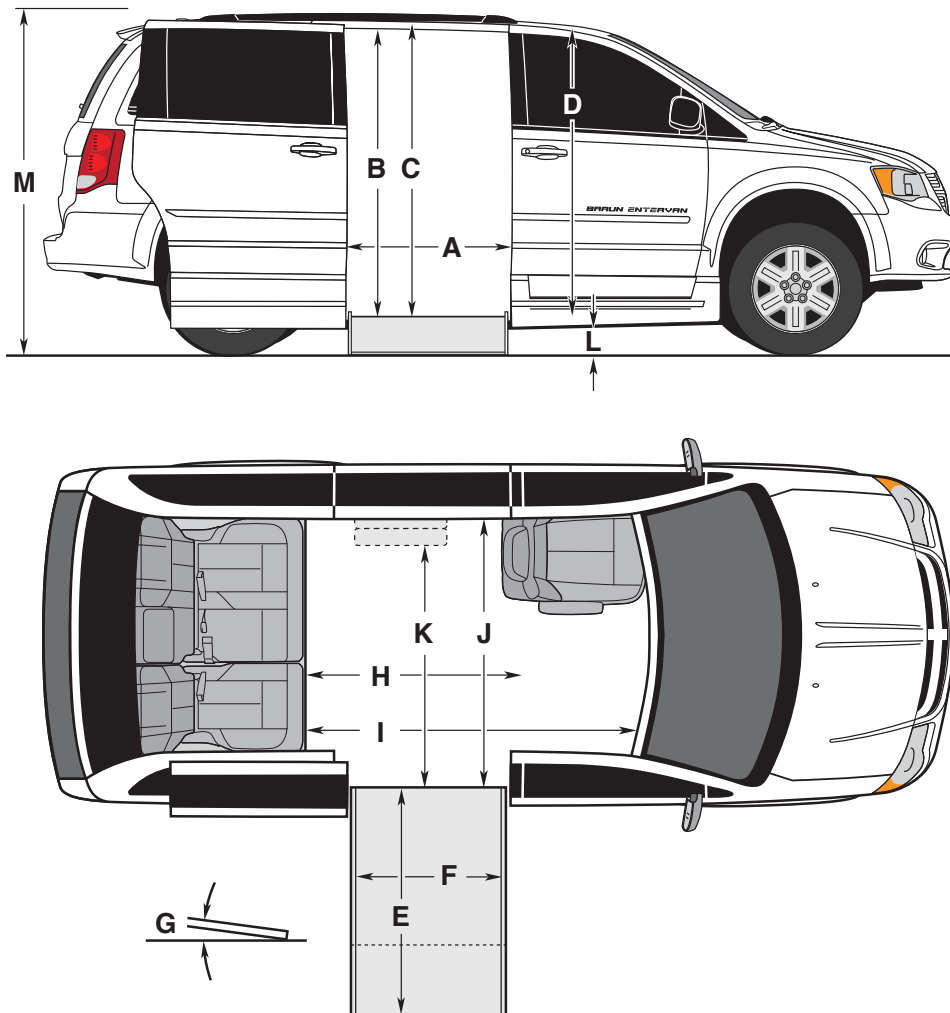
Item	Qty.	Description	Part Number
1	1	Assembly, Ramp Base & Extension - 30" Manual Chrysler Swing	E51519??A3004
2	1	Weldment, Main Ramp Housing - Manual	E41515WBK-04
3	1	Weldment, Arm - Ramp Drive - 30" Manual	E41505WBK-03
4	1	Collar, Split - 3/4" Shaft Ramp Motor Inner - Black	52565-2905BK
5	4	Screw, 1/4-20 x 1" - Socket Head Cap	24221
6	1	Bolt, Latch Support - 29" Ramp	51541-2905
7	1	Pin, Ramp Support - 29" Ramp	51815-2905
8	1	Bolt - 1/4-20 x 3/4" BHCS Nylock	25371
9	1	Weldment, Bracket - Ramp Latch Catch - Adjustable	E41510WBK
10	4	Washer, 1/4" Flat - Auto Black	10062
11	4	Washer, 1/4" Lock - Auto Black	10067
12	4	Bolt, 1/4-20 x 3/4 - Grade 5 - Hex - Auto Black	10970
13	2	Bearing, Plastic Flange - 3/8 ID x 1/4"	24028
14	1	Shaft, 30" Manual Ramp	E41507
15	2	Ring, 3/4 Snap - Auto Black	18657
16	1	Cotter, Hairpin - 1.938 Length - 0.5 Shaft	18832
17	1	Key, 3/16 x 3/16 x 1-1/4"	11002
18	1	Spring, Power - Clock - Manual Ramp	28258
19	1	Pivot Pin, Bushing - EV Ramp - 2905	52571-2905
20	1	Washer, 0.63 x 0.8 x 0.06 Nylon 10	83584
21	1	Bearing, Flange - 5/8" x 1/4" - 10FDU04	28435
22	2	Bolt, 3/8-16 x 3/4" FLBHSCS - Grade 8	25171
23	1	Washer, 0.519 ID x 0.876 OD x 0.074	12621
24	1	Bearing, 1/2 ID x 1-1/8 OD - Ball	21371
25	1	Washer, UHMW 1.500 OD x 0.76 ID x 0.062	29680
26	1	Retainer, Bearing	21451-03
27	1	Ball Stud, 13mm - 5/16-18 Male (Gas Spring)	12611
28	1	Washer, 5/16" Lock - Auto Black	10068
29	1	Nut, 5/16-18 Hex - Auto Black	10058
30*	0.0001	Loctite, Blue #242 - General Purpose	18822
31	2	Clip, Hairpin - 5/16 Diameter Shaft	84382
32	1	Weldment, Ramp Threshold - Manual / Manual	E51255W??
33	1	Assembly, Bracket - C-Pillar Mount - Manual Ramp - 2008 RT	E51257A-08
34	2	Bolt, Carriage 5/16-18 x 1"	15572
35	2	Washer, 5/16" Lock - Auto Black	10068
36	2	Nut, 5/16-18 Hex - Auto Black	10058
37	2	Washer, 5/16 Flat	10063
38	1	Spacer, Ramp Arm - Manual - Swing	E50964
39	2	Rivet, Pop - SD64BS - 3/16" - 0.13 / 0.25 - Auto Black	11513

\* Item not shown

?? represents color.

# DIMENSIONS

## Dimensions - 2011 & Up Dodge Conversion - Public Use



All dimensions are for reference only.

### Foldout Ramp

Door Opening Usable Width (Slide Door)	<b>A</b>	31-1/2"
Door Opening Usable Height (Slide Door)	<b>B</b>	56-1/4"
Interior Height at Center of Van	<b>C</b>	61"
Interior Height at Driver and Passenger Position	<b>D</b>	60"
Ramp Length	<b>E</b>	52"
Ramp Width (Usable Clear Opening)	<b>F</b>	30"
Ramp Angle (Unloaded)	<b>G</b>	12.5°
Interior Floor Length (Behind Front Seats)	<b>H</b>	57"
Overall Interior Floor Length (Flat Area)	<b>I</b>	87-1/2"
Interior Width at B Pillars	<b>J</b>	62"
Width - Ramp to Optional 2-Passenger Seat (Folded)	<b>K</b>	49-3/4"
<sup>1</sup> Ground Clearance (Unloaded) - <sup>2</sup> Loaded @ 1200 lbs	<b>L</b>	<sup>1</sup> 6-1/4" - <sup>2</sup> 5"
Overall Vehicle Height (Unloaded)	<b>M</b>	74"

Due to manufacturing tolerances both with the OEM vehicle and the conversion components, all dimensions may vary slightly from those shown.

**"Providing Access to the World"®**



**Over 300 Braun  
Dealers Worldwide**

 **THE BRAUN  
CORPORATION**  
"Providing Access to the World"



---

International Corporate Hdqrs: P.O. Box 310 Winamac, IN 46996 USA  
1-800-THE LIFT® (574) 946-6153 FAX: (574) 946-4670



**36925**  
**August 2011**

International Corporate Hdqrs: P.O. Box 310 Winamac, IN 46996 USA  
1-800-THE LIFT® (574) 946-6153 FAX: (574) 946-4670  
braunmobility.com™ Patent #6,825,628 B2 entervan.com™

*All illustrations, descriptions and specifications in this manual are based on the latest product information available at the time of publication. The Braun Corporation reserves the right to make changes at any time without notice.*