

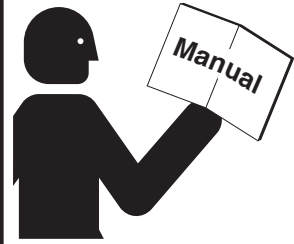
Maintenance and Service Manual

RAMPVAN[®] Wheelchair-Accessible Lowered Floor Conversion featuring 2004 - 2010 Toyota Minivans



Because Life is a Moving Experience[®]

⚠ WARNING



Read manual before servicing. Failure to do so may result in serious bodily injury and/or property damage.

Braun Rampvan[®]
featuring Toyota Minivans

INTRODUCTION

Introduction

The Braun Rampvan® lowered floor conversion is designed to provide years of pleasure and mobility independence. Familiarity with proper operation and maintenance procedures will help ensure safe, troublefree operation.

Consumer and commercial Rampvans are addressed in this manual. Safety precautions, maintenance and troubleshooting details are provided. A Repair Parts section with exploded views and corresponding parts lists are also provided.

Refer to the information applicable for the conversion you are servicing and disregard the information that does not apply.

A detailed warranty section is included. Refer to the Return Authorization Procedure when filling a warranty claim or ordering parts.

Contact The Braun Corporation at 1-800-THE LIFT® if any of this information is not understood.

⚠ WARNING

Maintenance, lubrication, troubleshooting and service procedures must be performed as specified by an authorized service technician. Failure to do so may result in serious bodily injury and/or property damage.

Rampvan® Operation Quick Reference Guide

Rampvan Operation Overview

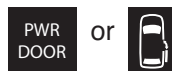
This overview provides a simplified explanation of Rampvan operation. Read the entire owner's (operator's) manual for complete details. Contact The Braun Corporation at 1-800-THE LIFT® if any of this information is not understood.

Power Operation

Rampvan power functions are managed by the One-Touch electronic control system. The control system can be activated using the Toyota remote keyless entry transmitter, any one of the interior mounted control switches or the optional magnetic entry.

Interior Mounted Switches

Interior mounted switches display one of these graphics.



Keyless Entry Operation

Toyota Remote Keyless Entry Transmitter

Press and release this switch.



One-Touch Control Activation

Rampvan power door, kneel functions and power ramp are activated by pressing and releasing any control switch.

Open Functions: When activating the Open functions, the power door opens, the kneel system lowers the rear of the vehicle and the ramp deploys.

Close Functions: When activating the Close functions, the ramp stows, the kneel system raises the rear of the vehicle and the power door closes.

Manual Operation

In event of power or equipment failure the door, ramp and kneel system can be manually operated. Read the operator's manual for further details.

Safety Precautions	2	2007 Power Door, Infloor Rampvan and Kneel Electrical Schematic	23B, 24B
Towing	2	2007 Power Door, Foldout Rampvan and Kneel Wiring Diagram	25A, 26A
Maintenance and Service Requirements	3	2007 Power Door, Foldout Rampvan and Kneel Electrical Schematic	25B, 26B
Maintenance and Lubrication Schedule	4-7	2007 Seat and Airbag Wiring Diagram	27A, 28A
Troubleshooting Diagnosis Chart	8-13	2007 Seat and Airbag Electrical Schematic	27B, 28B
Below Floor Obstructions	14, 15	2008 - 2010 Power Door, Infloor Rampvan and Kneel Wiring Diagram	29A, 30A
Auxiliary Power Supply	16	2008 - 2010 Power Door, Foldout Rampvan and Kneel Wiring Diagram	29B, 30B
Wiring Diagrams and Electrical Schematics		Specifications	31
Pre-2007 Power Door, Infloor Rampvan and Kneel Wiring Diagram	17A, 18A	Repair Parts	
Pre-2007 Power Door, Infloor Rampvan and Kneel Electrical Schematic	17B, 18B	Infloor Ramp Assembly	32, 33A, 34A
Pre-2007 Power Door, Foldout Rampvan and Kneel Wiring Diagram	19A, 20A	Pre-2007 Foldout Ramp Assembly	33B, 34B, 35
Pre-2007 Power Door, Foldout Rampvan and Kneel Electrical Schematic	19B, 20B	2007 Foldout Ramp Assembly	36, 37A, 38A
Pre-2007 Seat and Airbag Wiring Diagram	21A, 22A	Pre-2007 Kneel Actuator Assembly	38B, 39
Pre-2007 Seat and Airbag Electrical Schematic	21B, 22B	2007 Kneel Actuator Assembly	40, 41
2007 Power Door, Infloor Rampvan and Kneel Wiring Diagram	23A, 24A	Dimensions	42

SAFETY PRECAUTIONS

Safety Precautions

⚠️ WARNING

Read this manual, the Rampvan® operator's manual and supplements before performing operation, maintenance or service procedures. Failure to do so may result in serious bodily injury and/or property damage.

- ⚠️ WARNING** Maintenance and service procedures must be performed only by authorized service personnel.
- ⚠️ WARNING** Perform maintenance and lubrication procedures exactly as outlined in the Maintenance and Lubrication Schedule contained in this manual.
- ⚠️ WARNING** Perform troubleshooting and service procedures as outlined in this manual and/or service bulletins supplied with replacement parts.
- ⚠️ WARNING** Replacement parts must be Braun authorized replacements.
- ⚠️ WARNING** Do not attempt to interface aftermarket control systems without authorization from The Braun Corporation.

- ⚠️ WARNING** Do not use accessory devices not authorized by The Braun Corporation.
- ⚠️ WARNING** Keep clear of area in which the vehicle kneels (lowers).
- ⚠️ WARNING** Keep clear of area in which ramp operates.
- ⚠️ WARNING** Never modify (alter) a Braun Corporation Rampvan®.
- ⚠️ WARNING** Do not install a raised top on an Rampvan®.
- ⚠️ WARNING** Use of a Rampvan® for towing is prohibited.
- ⚠️ WARNING** Failure to follow these safety precautions may result in serious bodily injury and/or property damage.

Towing

Towing with a Rampvan®

Use of this lowered floor conversion vehicle for towing is prohibited.

If your Rampvan Needs Towed

If case of service, The Braun Corporation recommends that this lowered floor conversion vehicle be transported on a trailer rather than towed with one set of wheels suspended and the other set of wheels remaining in road contact.



Trailer Tow the Rampvan®

Maintenance and Service Requirements

Braun Rampvans® must be maintained and serviced by a Braun authorized service representative who has attended and been certified by The Braun Corporation Sales and Service School for Braun Mobility Products.

Read and become familiar with the operating procedures outlined in the Rampvan® operator's manual and the maintenance and troubleshooting information contained in this manual before beginning operation, maintenance or service procedures. Contact The Braun Corporation at 1-800-THE LIFT® if any of this information is not understood.

One-Touch Control System: Rampvan® power functions are managed by the One-Touch electronic control system. The control system can be activated using the Toyota remote keyless entry transmitter, any of the interior-mounted control switches, or the optional magnetic entry.

Braun Corporation Aftermarket Control Systems Policy: The Braun Corporation manufactures dedicated control systems for its products. These control systems have been designed and tested for use in conjunction with

specific Braun products. Braun control systems are the only control systems authorized for use with Braun products.

Do not attempt to interface aftermarket control systems without authorization from The Braun Corporation. To do so may result in serious bodily injury and/or property damage.

MAINTENANCE and SERVICE

Maintenance and Lubrication Schedule

Normal vehicle maintenance must be performed as outlined in the Toyota-supplied owner's manual. This maintenance is not the responsibility of The Braun Corporation. Refer to the Warranty section of this manual for details regarding The Braun Corporation Rampvan® Warranty.

The maintenance and lubrication procedures outlined in this schedule must be performed at the recommended scheduled intervals by a Braun authorized service representative.

Infloor Ramp: Keeping the infloor ramp and ramp cassette area clean is the most effective preventive maintenance practice to exercise. Dirt, mud, snow, ice and other foreign objects entering the cassette could result in potential ramp problems.

Clean specified components and the surrounding area before applying lubricants. When replacing lubricated components, be sure to lubricate during installation procedures.

A "dri-film" style of light oil should be applied where *Light Oil is called out (goes on wet and then dries). Lubricants of this type are available that do not attract dust and other debris. Use of improper lubricants can attract dirt or other contaminants which could result in wear or damage to components. Avoid lubricants that can leave stains.

Some lubricants referenced in the schedule are available from The Braun Corporation (part numbers provided where specified).

All listed inspection, lubrication and maintenance procedures should be repeated at "3 month" intervals following the scheduled "6 month" maintenance. These intervals are a general guideline and will vary according to frequency of use and conditions. Exposure to severe conditions (weather, environment, contamination, heavy usage, etc.) may require inspection and maintenance procedures to be performed more often than specified.

WARNING

Maintenance and lubrication procedures must be performed as specified by an authorized service technician. Failure to do so may result in serious bodily injury and/or property damage.

Discontinue Rampvan® use immediately if maintenance and lubrication procedures are not properly performed, or if there is any sign of wear, damage, improper operation or any abnormal condition. Contact your sales representative or call The Braun Corporation at 1-800-THE LIFT®. One of our national Product Support representatives will direct you to an authorized service technician who will inspect your Rampvan®.

Maintenance and Lubrication Schedule

3 Months	<p>Foldout Ramp: Foldout ramps vary in design. Disregard references to components not present.</p>	
	Outboard ramp extension hinge and fasteners	Clean and lubricate with *Light Oil. Resecure or replace fasteners as needed
	Inspect ramp inboard pivot points (bolts/screws and bushings/bearings) for positive securement, wear or damage	Clean and lubricate with *Light Oil. Tighten, replace or correct as needed
	Inspect ramp fold pickup bearing for positive securement, alignment, wear or other damage	Replace or correct as needed. If bearing retaining screw is not secure or is removed for service, apply Blue #242 Thread Locker Loctite to retaining screw and tighten.
	Inspect ramp fold arm for positive securement, alignment, wear or other damage	Tighten, replace or correct as needed
	Inspect ramp fold arm bearing slot for excessive wear or damage	Replace if needed
	Inspect ramp extension chain for proper alignment, securement or other defects	Realign, resecure, replace or otherwise correct as needed
	Inspect ramp floor mounting hardware for securement (loose or missing)	Resecure, replace or correct as needed
	<p>Infloor Ramp</p>	
	Inspect infloor ramp platform and cassette for alignment, obstructions, cleanliness, wear or other damage	Realign, remove obstruction, clean, replace or otherwise correct as needed. Use air compressor to blow out debris.
	Inspect drive belt idler pulley for securement (loose pulley will cause drive system to slip)	Resecure, replace or adjust as needed
	<p>General Items</p>	
	Lower power slide door track	Inspect for obstructions and clean (vacuum or blow out debris using compressor)
Wheelchair and occupant restraint belts and tie down track	Inspect for any defects such as cuts, fraying or any malfunction of belt, buckle or securement hardware. Clean dirt and debris from tie down track. Replace immediately if damaged.	
Inspect removable seat bases for proper engagement of latching mechanisms	Replace or correct as needed	

MAINTENANCE and SERVICE

Maintenance and Lubrication Schedule

6 Months	Perform all procedures listed in previous section also	
	<p>Power Fold Ramps:</p> <ul style="list-style-type: none"> • Ramp flap (extension) chain 	Lubricate with Anti-Seize (14 oz. caulk tube available per Braun part no. 24710)
	<p>Remove ramp housing cover/rear vertical panel and inspect:</p> <ul style="list-style-type: none"> • Top mount bracket bolts for securement (loose or missing) • Motor mounting bolts for securement (loose or missing) • Ramp fold arm securement (collar and mounting screws) • Microswitches securement and adjustment • Microswitch wires and terminals for securement or damage • Magnetic switch (applicable for 2007 only) 	<p>Resecure, adjust microswitches, replace damaged parts or otherwise correct as needed.</p> <p>Note: See Pre-2007 Foldout Ramp and 2007 Foldout Ramp Exploded views on pages 31B, 32B, 35A and 36A.</p>
	<p>Power Infloor Ramps: Deploy ramp platform from cassette and inspect:</p> <ul style="list-style-type: none"> • Drive belt adjustment (slippage) and idler pulley for securement and alignment • Motor mounting bolts for securement (loose or missing) • Microswitches securement and adjustment • Microswitch wires and terminals for securement or damage 	Resecure, adjust, align, replace damaged parts or otherwise correct as needed. Note: See Infloor Ramp Exploded View on pages 31A and 32A.
	<p>Linear Bearing Blocks</p>	Lubricate with light penetrating oil. Remove floor transition flap trim to access. Insert oil in top of blocks using a flex nozzle.
	<p>Manual Fold Ramps:</p> <ul style="list-style-type: none"> • Ramp flap (extension) chain 	Lubricate with Anti-Seize (14 oz. caulk tube available per Braun part no. 24710)
<p>Remove ramp housing cover/rear vertical panel and inspect:</p> <ul style="list-style-type: none"> • Top mount bracket bolts for securement (loose or missing) • Spring housing mounting bolts for securement (loose or missing) • Ramp fold arm securement (collar and mounting screws) 	Resecure, replace damaged parts or otherwise correct as needed.	
<p>Inspect power source: OEM battery, 50 am-pere fuse, OEM engine compartment fuse block and driver side under dash-mounted fuse block.</p>	Resecure, repair or replace	
Continued on next page		

Maintenance and Lubrication Schedule

<p>6 Months</p>	<p>Continued from previous page</p> <p>Inspect kneel actuator assembly for:</p> <ul style="list-style-type: none"> • Actuator mounting pin securement (micro-switch activation block) • Inspect chain for misalignment, wear or damage • Inspect chain master-links for securement • Inspect chain idler (pulley) for securement, wear, damage or misalignment • Inspect electrical harnesses for positive connections, proper routing, wear or other damage • Kneel microswitches <p>Kneel electrical override</p> <p>Kneel assembly chain</p>	<p>Realign, resecure, replace damaged parts or otherwise correct as needed. Note: See Kneel Actuator Assembly exploded view on page 37.</p> <p>Check to make sure switches are not worn, broken, loose or out of adjustment.</p> <p>Check operation</p> <p>Lubricate with Anti-Seize (14 oz. caulk tube available per Braun part no. 24710)</p>
<p>Consecutive 3 Month Intervals</p>	<p>Repeat all previously listed inspection, lubrication and maintenance procedures at 3 month intervals.</p>	

TROUBLESHOOTING

Troubleshooting Diagnosis Chart

⚠ WARNING

Troubleshooting and repair procedures must be performed as specified by an authorized service technician only. Failure to do so may result in serious bodily injury and/or property damage.

If a problem occurs with your Rampvan[®], discontinue operation immediately! Do not attempt repairs yourself. Contact your sales representative or call The Braun Corporation at 1-800-THE LIFT. One of our national Product Support representatives will direct you to an authorized service technician who will inspect your Rampvan[®].

The cause of the problem can be determined by locating the function and related symptom in the Troubleshooting Diagnosis

Charts. The specific cause and remedy can then be determined by process of elimination. Electrical Schematics and Wiring Diagrams are provided to aid in troubleshooting.

A Repair Parts section with exploded views and corresponding parts lists is also provided. Correct the problem if possible. If the problem continues, contact The Braun Corporation.

FUNCTION	SYMPTOM	POSSIBLE CAUSE	REMEDY
----------	---------	----------------	--------

1.00 NO OPERATION	1.10 No Power To Rampvan[®] Systems (Circuit Problem)	1.11 Poor ground connection 1.12 Battery terminals dirty 1.13 Battery damaged 1.14 Battery discharged 1.15 12 volt source (check fuses for 12 volts) 1.16 Circuit breaker tripped or damaged	Clean and tighten Clean and tighten Replace Charge battery Check for blown fuse, loose terminals or broken wire or cable Reset or Replace
	1.20 Power to Rampvan[®] Systems But No Operation	1.21 Transmission not in Park 1.22 OEM Slide Door Off switch pressed to "IN" position 1.23 Slide door handles have been manually operated 1.24 Loose connection 1.25 Broken wire 1.26 Wire terminal 1.27 Control switch damaged 1.28 Braun electronic controller	Engage transmission in Park Press switch and return to OUT position Close passenger slide door using keyless entry, interior mounted switch or optional magnetic entry Clean and tighten Repair or replace Crimp tightly to wire Replace Run serial diagnostic test and/or reset by unplugging 6-pin connector from the controller for 30 seconds.

TROUBLESHOOTING

FUNCTION	SYMPTOM	POSSIBLE CAUSE	REMEDY
2.00 KNEEL SYSTEM (LOWER)	2.10 No Lower Operation	2.11 See 1.00 2.12 Kneel On/Off switch is in OFF position. 2.13 Actuator harness disconnected or otherwise damaged 2.14 Actuator damaged. Note: Actuator can be checked with kneel override switch (passenger side C-Pillar). 2.15 Chain disconnected or otherwise damaged	Press switch to ON position Connect, repair or replace Press the kneel electrical override switch to test actuator (passenger side C-pillar). Replace if damaged Connect, repair or replace
	2.20 Faulty Kneel (Lower) Operation	2.21 Mechanical binding 2.22 Misalignment or damage to kneel system components. Inspect kneel actuator assembly for: <ul style="list-style-type: none"> • Actuator mounting pin securement (loose or missing) • Inspect chain for wear, misalignment, or other damage • Inspect chain pulley for securement, wear, misalignment or damage 	Check and correct Connect, replace or otherwise correct as needed
3.00 POWER DOOR (OPEN)	3.10 No Open Operation (Motor Does Not Run)	3.11 See 1.00 3.12 Door microswitch(es) damaged 3.13 Door operator motor harness disconnected or damaged 3.14 Door operator motor damaged	See Braun Service Center See Braun Service Center See Braun Service Center
	3.20 Motor Runs But Door Does No Move	3.21 Misaligned or otherwise damaged drive cable or door track 3.22 Door motor clutch failure	See Toyota Service Center See Toyota Service Center
	3.30 Faulty Open Operation	3.31 Obstruction in door path 3.32 Mechanical binding	Remove obstruction Check and correct
	3.40 Door Does Not Open Fully	3.41 Door Open microswitch out of adjustment or otherwise damaged 3.42 See 3.30	See Braun Service Center

TROUBLESHOOTING

FUNCTION	SYMPTOM	POSSIBLE CAUSE	REMEDY
----------	---------	----------------	--------

4.00 FOLDOUT RAMP DEPLOY	4.10 No Unfold (Deploy) Operation	4.11 See 1.00 and 3.41 4.12 Ramp motor harness disconnected or damaged 4.13 Loose, damaged or missing fold arm securement collar/coupling and/or screws 4.14 Ramp Unfolded (Deployed) microswitch out of adjustment or damaged 4.15 Ramp motor damaged	Connect, repair or replace Tighten, replace or otherwise correct as needed Adjust or replace. Pre-2007 Ramp: Switch adjustment not available Replace motor
	4.20 Ramp Contacts Door	4.21 Door not fully open	See Braun Service Center
	4.30 Faulty Unfold (Deploy) Operation	4.31 Ramp Unfolded (Deployed) microswitch harness disconnected or damaged 4.32 Misalignment or damage to: • Ramp fold bearing • Ramp fold arm • Ramp fold arm bearing slot • Ramp pivot points or hinge(s) 4.33 Mechanical binding 4.34 Fold/Unfold assist spring broken, disconnected or otherwise damaged (manual ramps only) 4.35 See 3.41 and 4.14	Connect, repair or replace Realign, tighten, replace damaged parts or otherwise correct as needed Check and correct Connect or replace spring
	4.40 Faulty Ramp Extension Unfold (Deploy)	4.41 Ramp extension chain broken, detached, misaligned or otherwise damaged 4.42 Lack of lubrication 4.43 Ramp hinge damage	Replace, attach, realign or otherwise correct Lubricate - See Maintenance and Lubrication Schedule Correct or replace as needed

5.00 FOLDOUT RAMP STOW	5.10 No Fold (Stow) Operation	5.11 See 1.00 5.12 Ramp Folded (Stowed) microswitch out of adjustment or damaged 5.13 See 3.41, 4.12, 4.13 and 4.15	Adjust or replace
	5.20 Faulty Fold (Stow) Operation	5.21 Ramp Folded (Stowed) microswitch harness disconnected or damaged 5.22 Fold arm support/stop out of adjustment 5.23 See 3.41, 4.13, 4.14, 4.32, 4.33, 4.42 and 4.43	Connect, repair or replace Adjust support/stop for more travel

FUNCTION	SYMPTOM	POSSIBLE CAUSE	REMEDY
6.00 INFLOOR RAMP DEPLOY	6.10 No Out (Deploy) Operation	6.11 See 1.00 and 3.41 6.12 Ramp motor harness disconnected or damaged 6.13 Loose, damaged or missing belt, drive pulley or belt securement components 6.14 Ramp Out (Deploy) microswitch out of adjustment or damaged 6.15 Ramp motor damaged	Connect, repair or replace Tighten, replace or otherwise correct as needed Adjust or replace Replace motor
	6.20 Ramp Contacts Door	6.21 Door not fully open	See Braun Service Center
	6.30 Faulty Out (Deploy) Operation	6.31 Ramp Out (Deploy) microswitch harness disconnected or damaged 6.32 Misalignment or damage to: <ul style="list-style-type: none"> • Loose or missing ramp mounting hardware • Loose or missing linear bearing block mounting hardware • Loose or damaged linear slide tube(s) • Linear slide tube bearing(s) loose or damaged 6.33 Carriage height out of adjustment (slide components dragging on internal frame) 6.34 Lateral alignment roller(s) loose, damaged or missing 6.35 Mechanical binding 6.36 See 3.41, 6.13 and 6.14	Connect, repair or replace Realign, tighten, replace damaged parts or otherwise correct as needed Adjust carriage height adjustment screw (clockwise to raise carriage and counter clockwise to lower) Tighten, replace or otherwise correct as needed. Rear outboard roller is adjustable Check and correct
7.00 INFLOOR RAMP STOW	7.10 No In (Stow) Operation	7.11 See 1.00 7.12 Ramp In (Stow) microswitch out of adjustment or damaged 7.13 See 3.41, 6.12, 6.13 and 6.15	Adjust or replace
	7.20 Faulty In (Stow) Operation	7.21 Ramp In (Stow) microswitch harness disconnected or damaged 7.23 See 3.41, 6.13, 6.14, 6.32, 6.33, 6.34 and 6.35	Connect, repair or replace

TROUBLESHOOTING

FUNCTION	SYMPTOM	POSSIBLE CAUSE	REMEDY
8.00 POWER DOOR (CLOSE)	8.10 No Close Operation	8.11 See 3.10, 4.12, 5.12 and 7.12	
	8.20 Motor Runs - Door Does Not Move	8.21 See 3.20	
	8.30 Faulty Operation	8.31 See 3.30	
	8.40 Door Does Not Close Fully	8.41 See 3.30	
	8.50 Door Contacts Ramp When Closing	Foldout Ramps: 8.51 See 4.40, 5.12 and 5.20 Infloor Ramps: 8.52 See 6.32, 6.33, 6.34, 6.35, 6.36 and 7.12	
9.00 KNEEL SYSTEM (RAISE)	9.10 No Raise Operation	9.11 See 1.00, 2.12, 2.13, 2.14, 2.15 and 2.20	
	9.20 Faulty Operation	9.21 See 2.20	
10.00 REMOTE CONTROL	10.10 No Operation	10.11 See 1.20 10.12 See Toyota vehicle owner's manual	
11.00 KNEEL ELECTRICAL OVERRIDE	11.10 No Operation	11.11 See 1.00, 2.13, 2.14 and 2.15 11.12 Kneel electrical override switch damaged	Replace switch
	11.20 Faulty Operation	11.21 See 2.20	

TROUBLESHOOTING

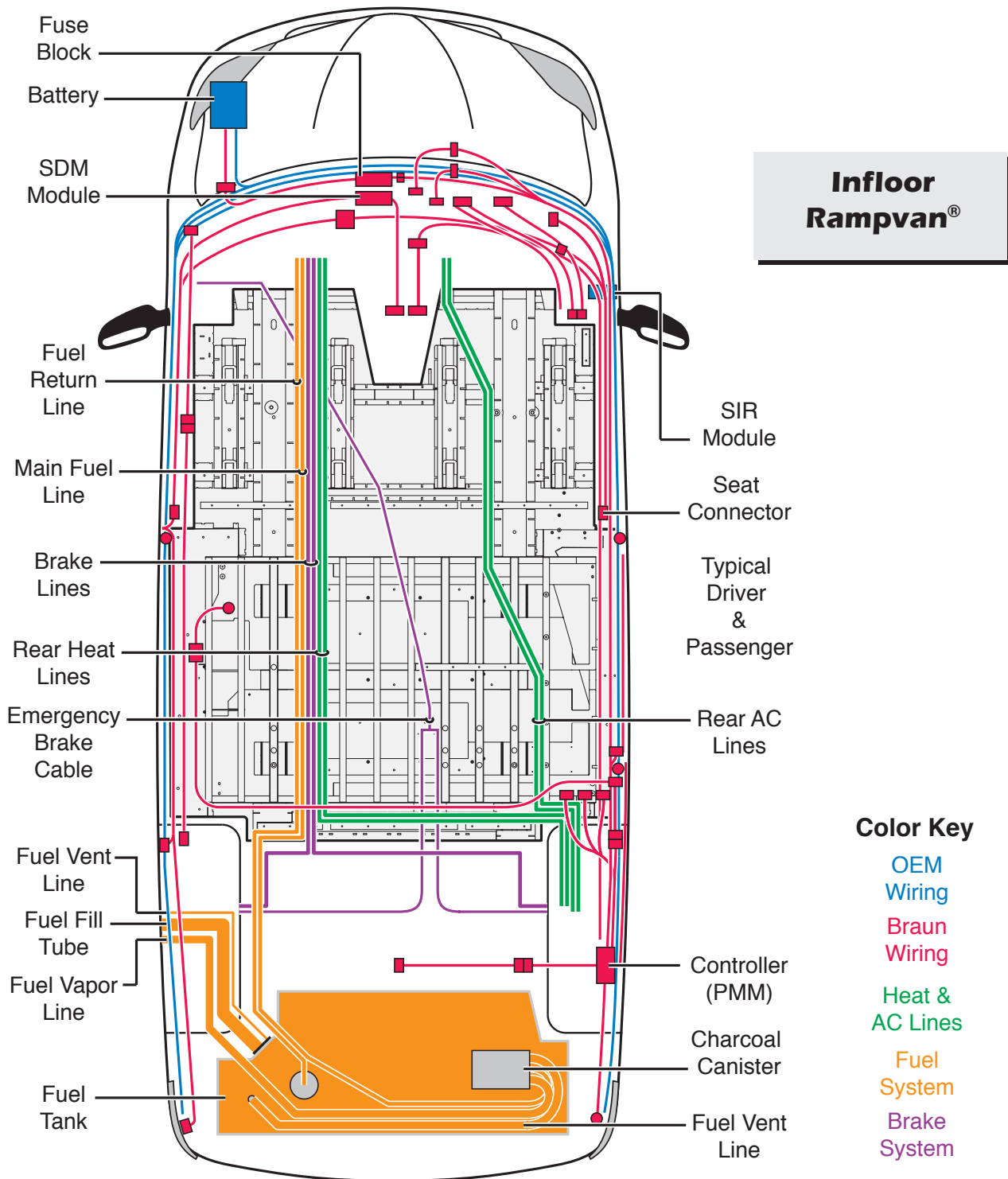
FUNCTION	SYMPTOM	POSSIBLE CAUSE	REMEDY
12.00 KNEEL MECHANICAL OVERRIDE	12.10 No Operation	12.10 Kneel motor release nut missing from actuator motor shaft	Replace nut

BELOW FLOOR OBSTRUCTIONS

When installing an electrical tie-down, power seat or other auxiliary electrical device in an Rampvan®, obstructions below the floor

must be avoided. Obstructions include wiring, fuel system, brake lines, etc. Installers must be aware of these obstructions.

Refer to the applicable illustration when installing aftermarket equipment to avoid contacting or damaging vital components under the floor.



BELOW FLOOR OBSTRUCTIONS

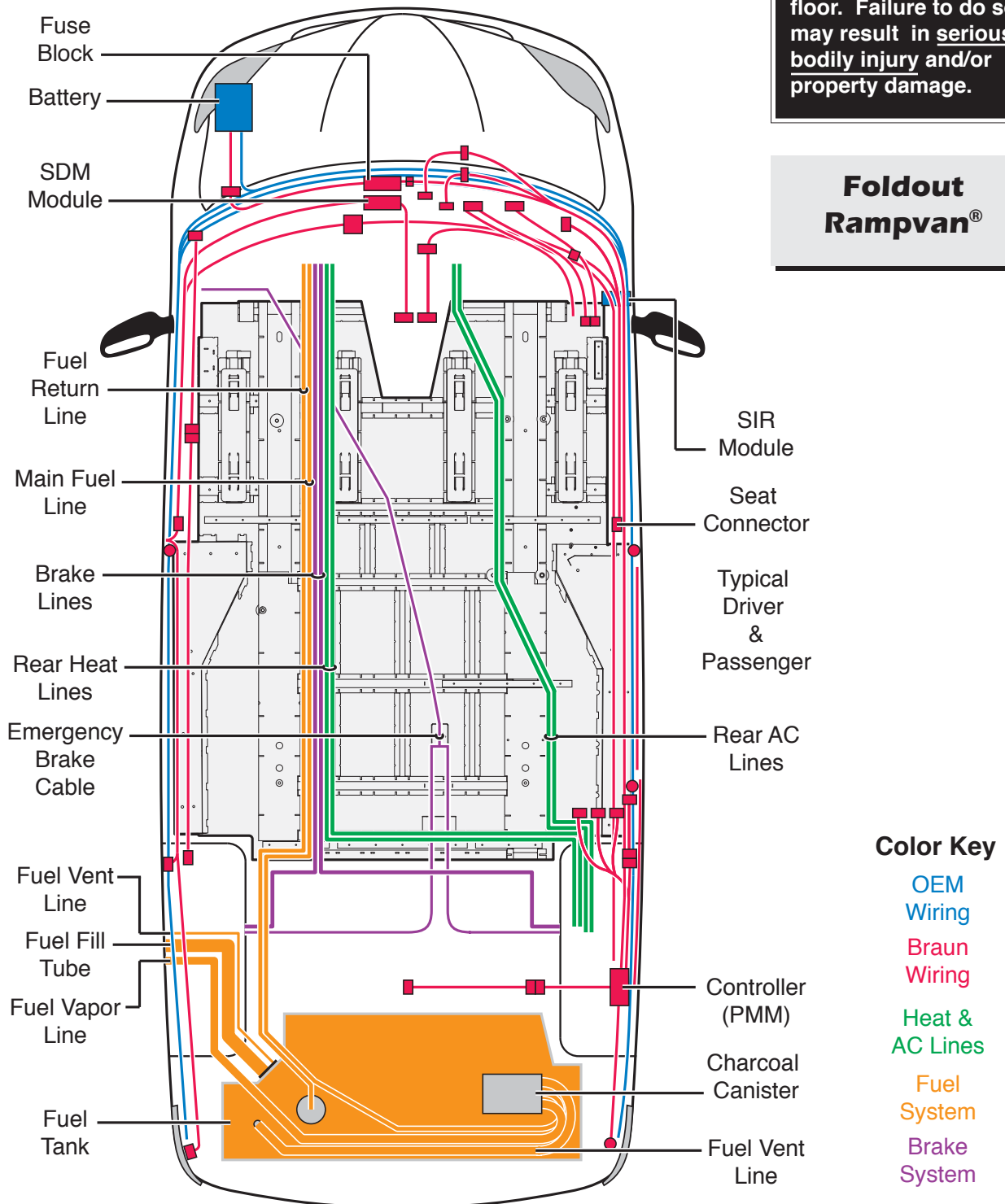
Drilling or cutting into such obstructions may result in potential hazards as well as property damage.

Note: Some wiring harnesses shown may not be present. Avoid all harness locations.

⚠ WARNING

Check for obstructions such as wires, gas lines, exhaust, etc. before drilling or cutting through floor. Failure to do so may result in serious bodily injury and/or property damage.

Foldout Rampvan®



AUXILIARY POWER SUPPLY

⚠ CAUTION

Do not connect auxiliary devices to vehicle battery. Doing so may result in damage to electrical system and/or electronic components.

Do not connect auxiliary devices directly to the vehicle battery. Doing so may result in damage to electrical system and/or electronic components.

Two fuse blocks are provided as an auxiliary power source for

dealer-installed auxiliary electrical device(s). Fuse block details and specifications are provided below. The fuse blocks are located on the driver side of the dash center console.

Below Floor Obstructions:

When installing aftermarket equipment in an Rampvan[®], obstructions below the floor must be avoided. Obstructions include wiring, fuel system, brake lines, etc. Installers must be aware of these obstructions.

Refer to the illustrations on pages 14 and 15 to avoid contacting or damaging vital components under the floor.

⚠ WARNING



Risk of electrical fire! Install and electrically terminate Auxiliary electrical device as specified by device manufacturer.

Fuse Blocks:

Two fuse blocks are provided for use as an auxiliary power source (one Ignition fuse block and one Battery fuse block).

The Battery fuse block provides power at all times (independent of the vehicle ignition). The Ignition fuse block supplies power when the vehicle ignition is on only.

Each fuse block can accommodate up to four ATO[®] type fuses.

The installer is responsible for supplying the correct gauge wire and fuse for the particular device to be attached to the fuse block (as specified by the manufacturer of the device).

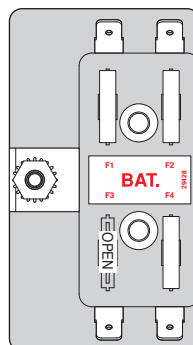
Note: If installing an auxiliary electrical device that requires more than a 50 ampere power source, an alternative power source must be provided.

Note: The total maximum load for each block must not exceed 50 amperes.

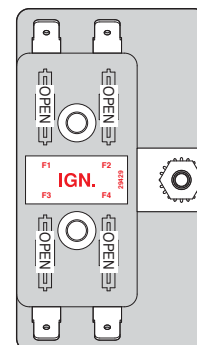
The fuse block assembly is located under the driver side dashboard.

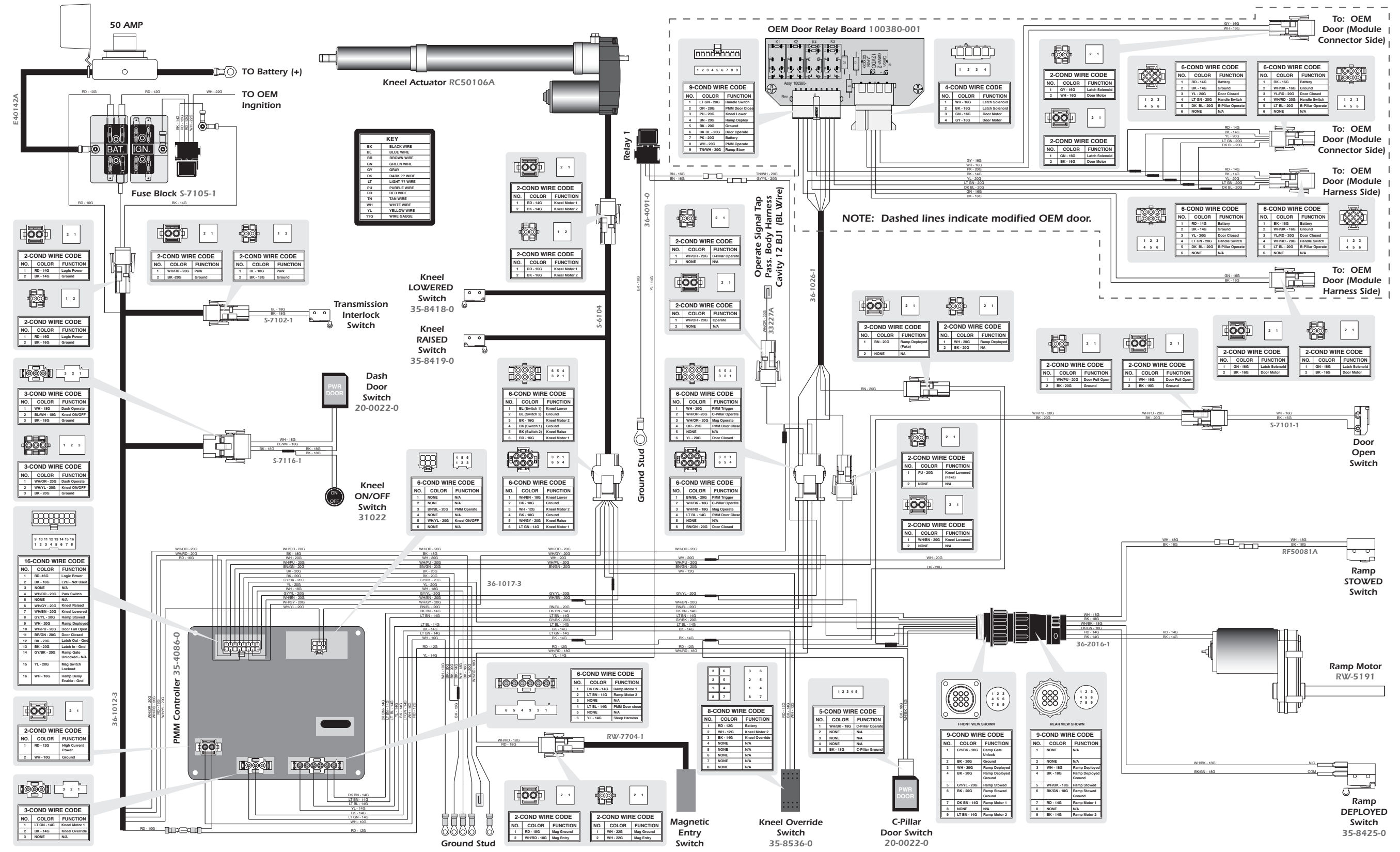
Note: See below floor obstructions illustrations on pages 14 and 15.

Battery Fuse Block



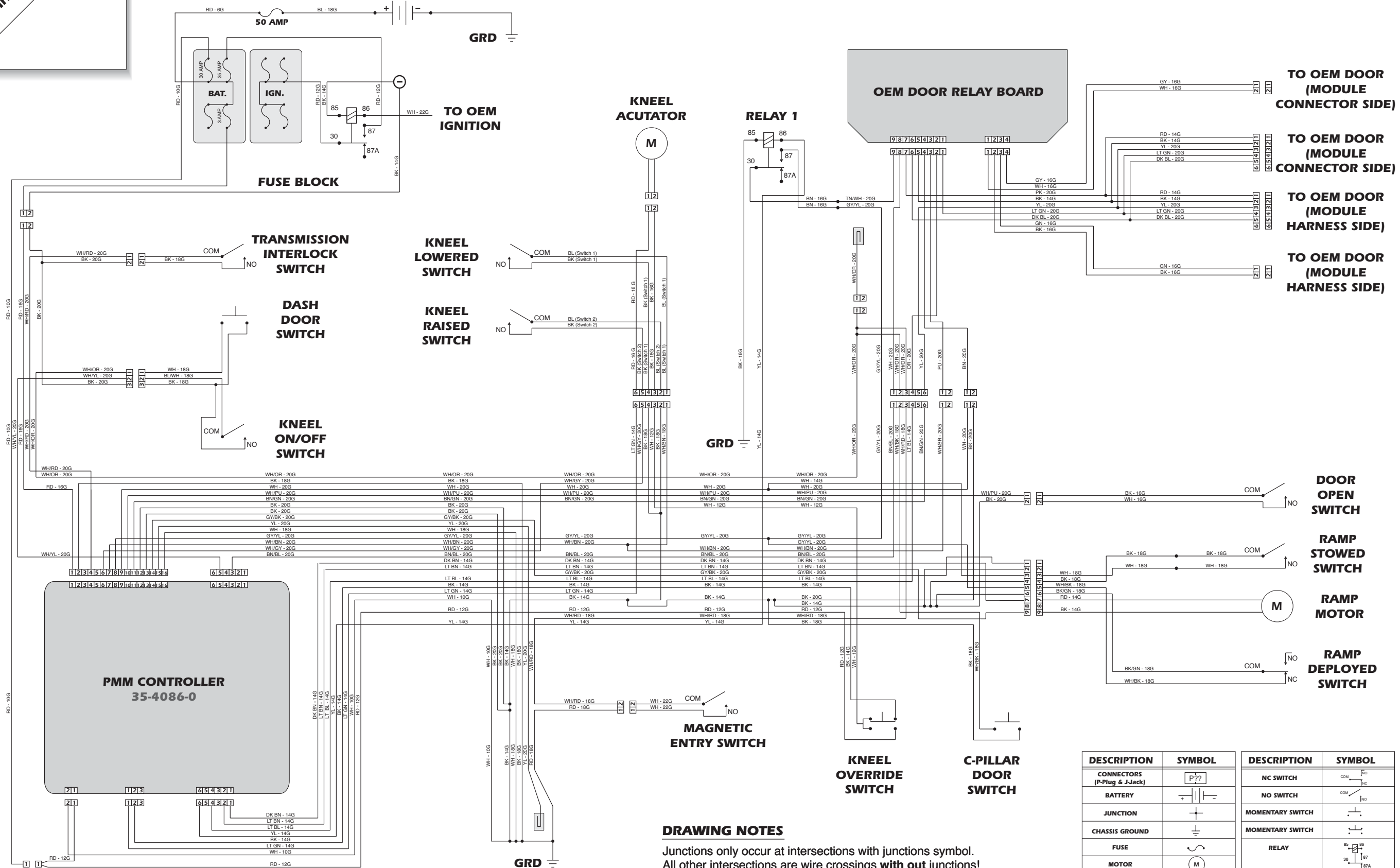
Ignition Fuse Block





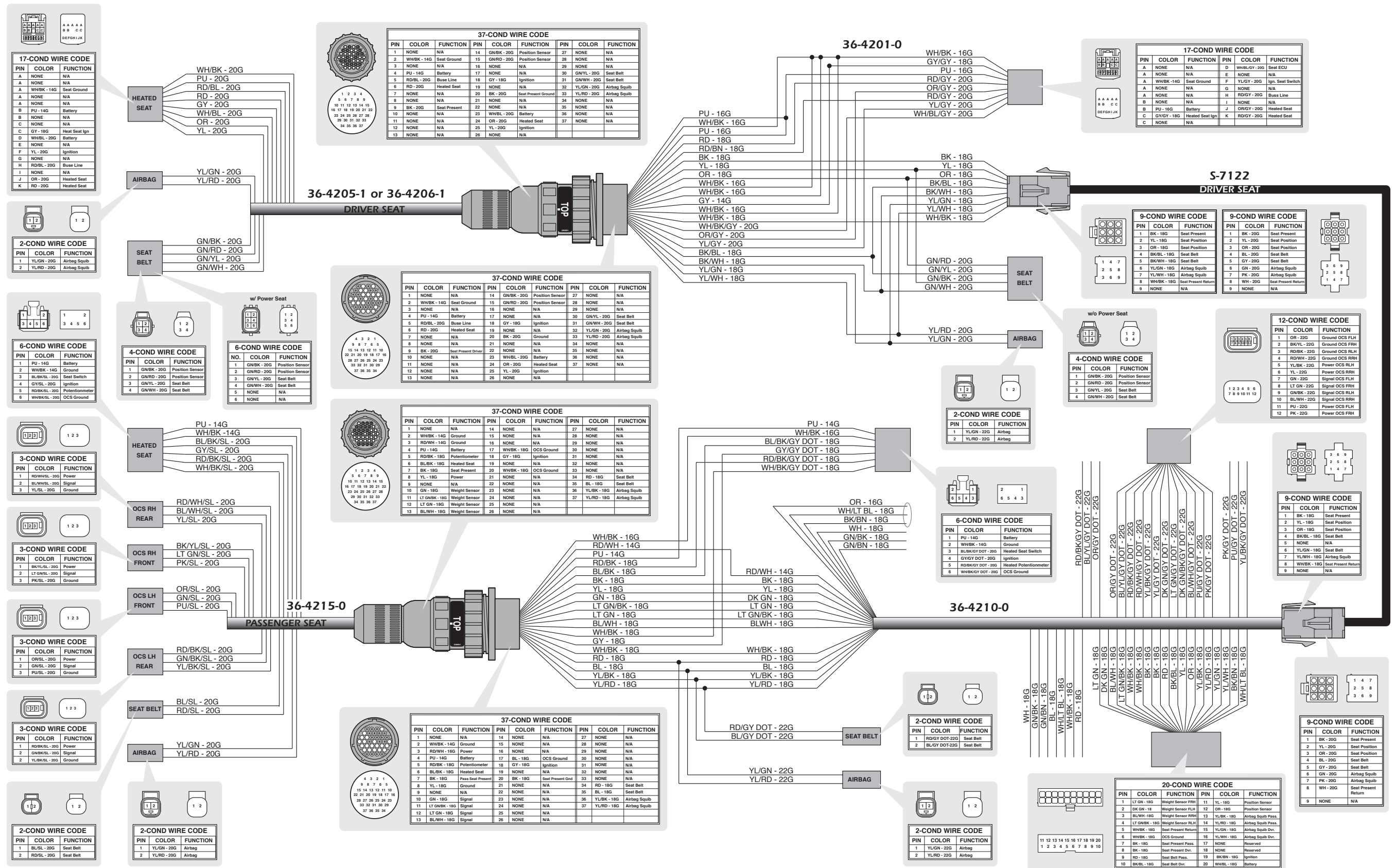
Unfold for:
Pre-2007 Power Door,
Foldout Ramp and Kneel
Wiring Diagram

Pre-2007 Power Door, Foldout Ramp and Kneel Electrical Schematic



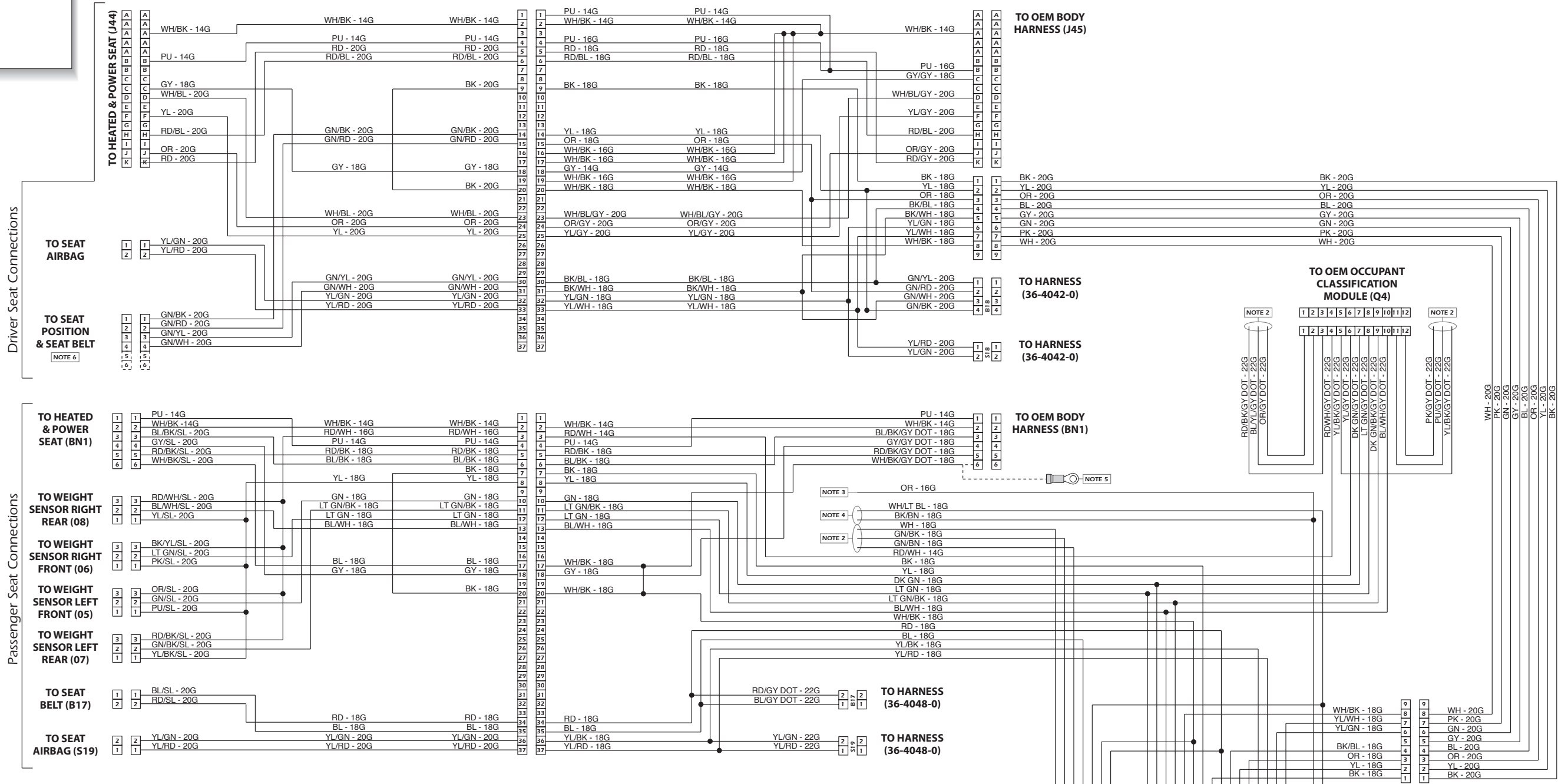
DRAWING NOTES
Junctions only occur at intersections with junctions symbol.
All other intersections are wire crossings **with out** junctions!

DESCRIPTION	SYMBOL	DESCRIPTION	SYMBOL
CONNECTORS (P-Plug & J-Jack)		NC SWITCH	
BATTERY		NO SWITCH	
JUNCTION		MOMENTARY SWITCH	
CHASSIS GROUND		MOMENTARY SWITCH	
FUSE		RELAY	
MOTOR			



Unfold for:
Pre-2007 Seat and
Airbag Wiring Diagram

Pre-2007 Seat and Airbag Electrical Schematic



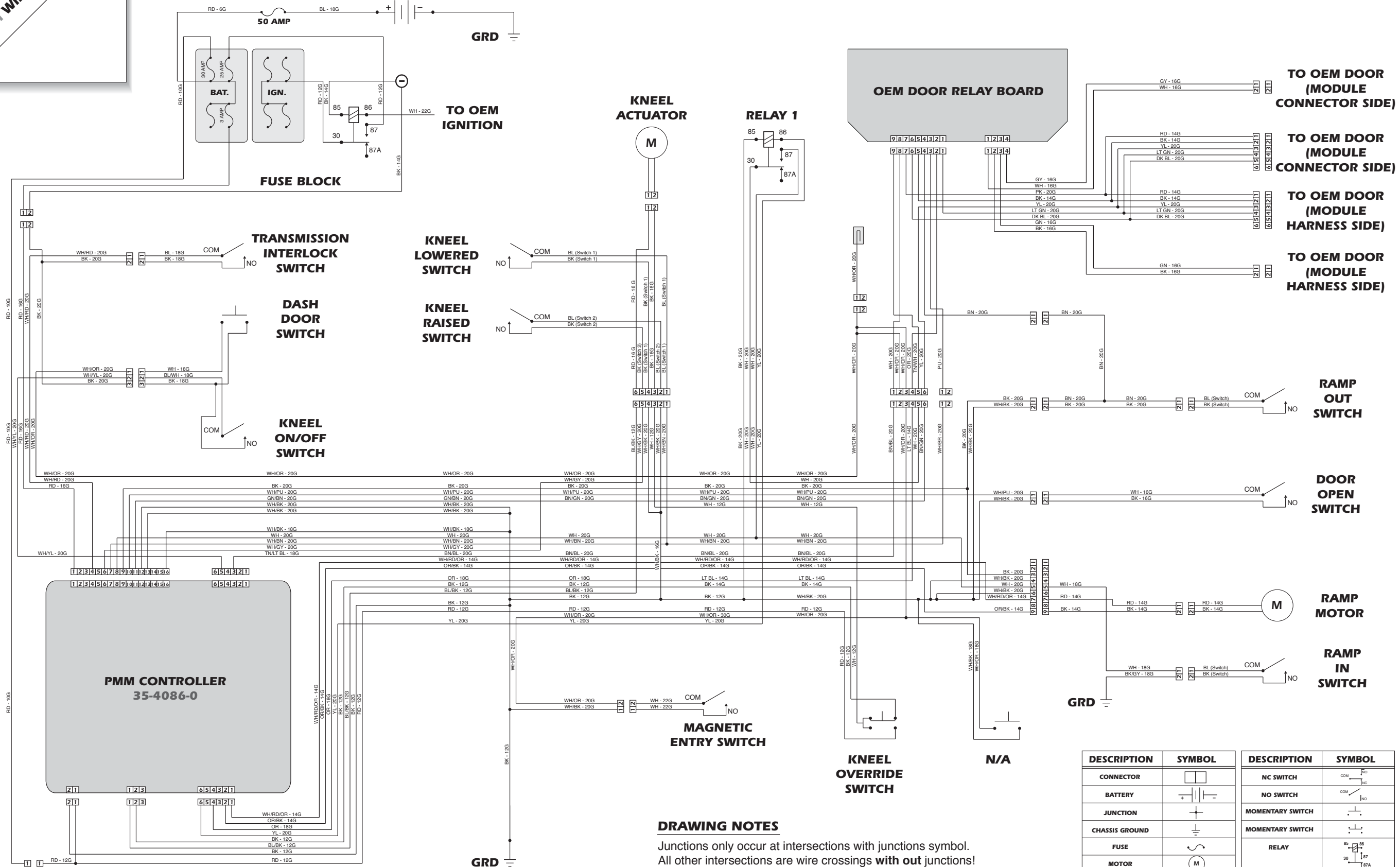
DRAWING NOTES

- Junctions only occur at intersections with junctions symbol. All other intersections are wire crossings with out junctions!
- Wires are cut and heat shrunk together.
- Soldered into cruise control ignition (PINK wire) or cigarette lighter.
- Wires are soldered together in harness.
- Hardwire to B-pillar bolt for manual passenger seat only!
- Connector is 4-pin for manual seat & 6-pin for power seat. Pin location does not change!

KEY			
BK	BLACK WIRE	LT	LIGHT ?? WIRE
BL	BLUE WIRE	PU	PURPLE WIRE
BR	BROWN WIRE	RD	RED WIRE
GN	GREEN WIRE	TN	TAN WIRE
GY	GRAY WIRE	WH	WHITE WIRE
GY DOT	GRAY DOT WIRE	YL	YELLOW WIRE
DK	DARK ?? WIRE	??G	WIRE GAUGE

Unfold for:
2007 Power Door,
Infloor Ramp and
Kneel Wiring Diagram

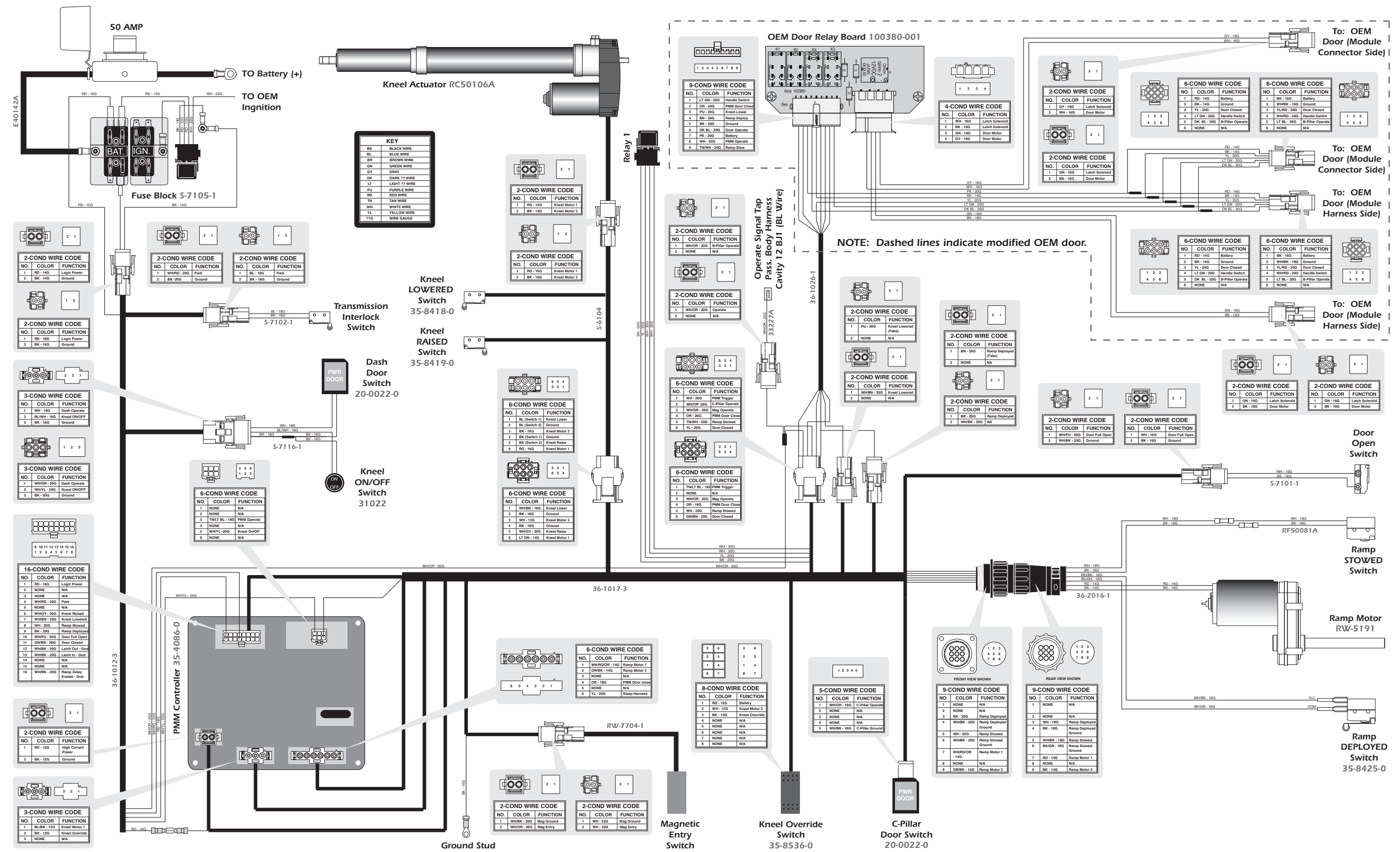
2007 Power Door, Infloor Ramp and Kneel Electrical Schematic



DRAWING NOTES

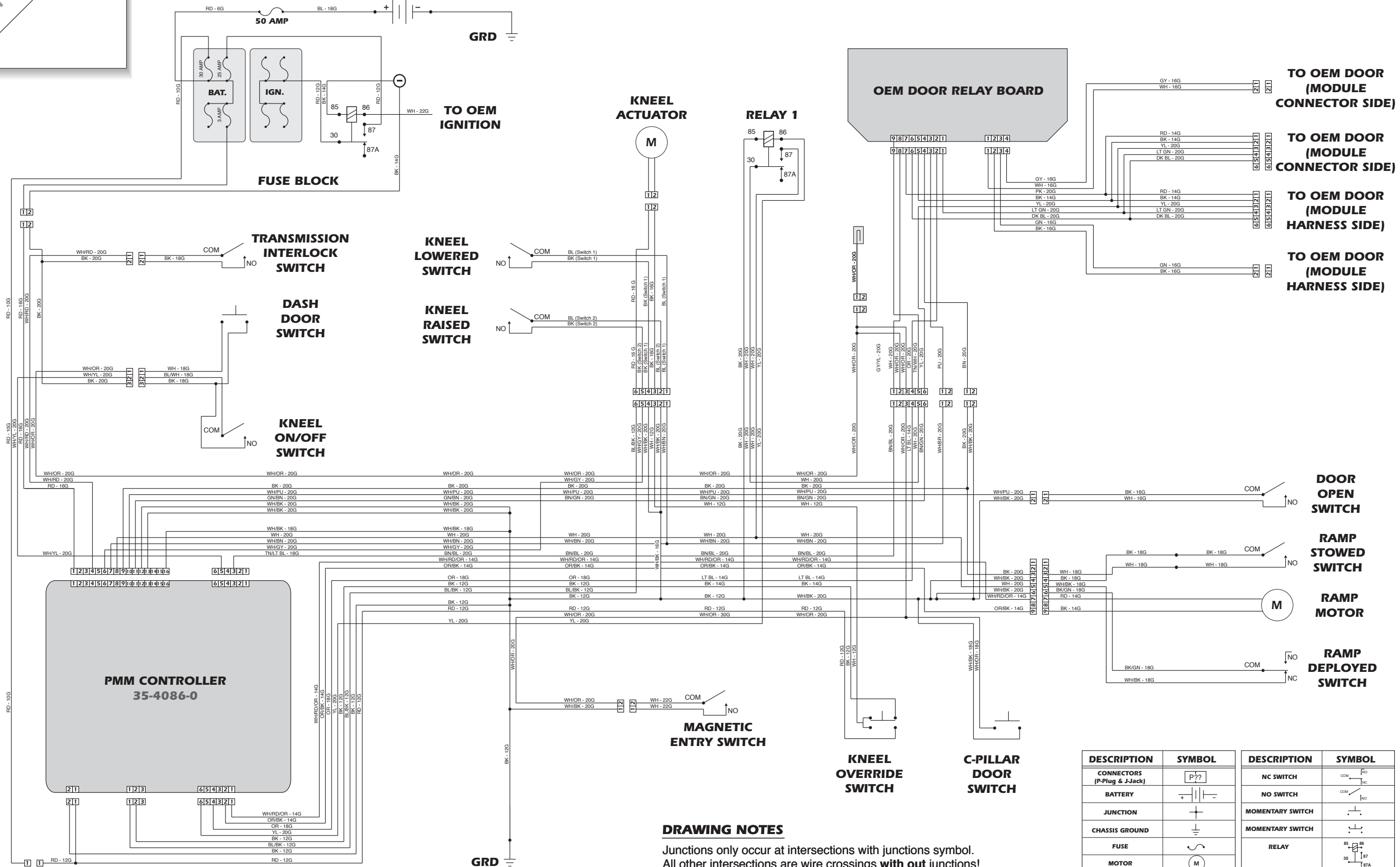
Junctions only occur at intersections with junctions symbol.
All other intersections are wire crossings **with out** junctions!

DESCRIPTION	SYMBOL	DESCRIPTION	SYMBOL
CONNECTOR		NC SWITCH	
BATTERY		NO SWITCH	
JUNCTION		MOMENTARY SWITCH	
CHASSIS GROUND		MOMENTARY SWITCH	
FUSE		RELAY	
MOTOR			



Unfold for:
2007 Power Door,
Foldout Ramp and
Kneel Wiring Diagram

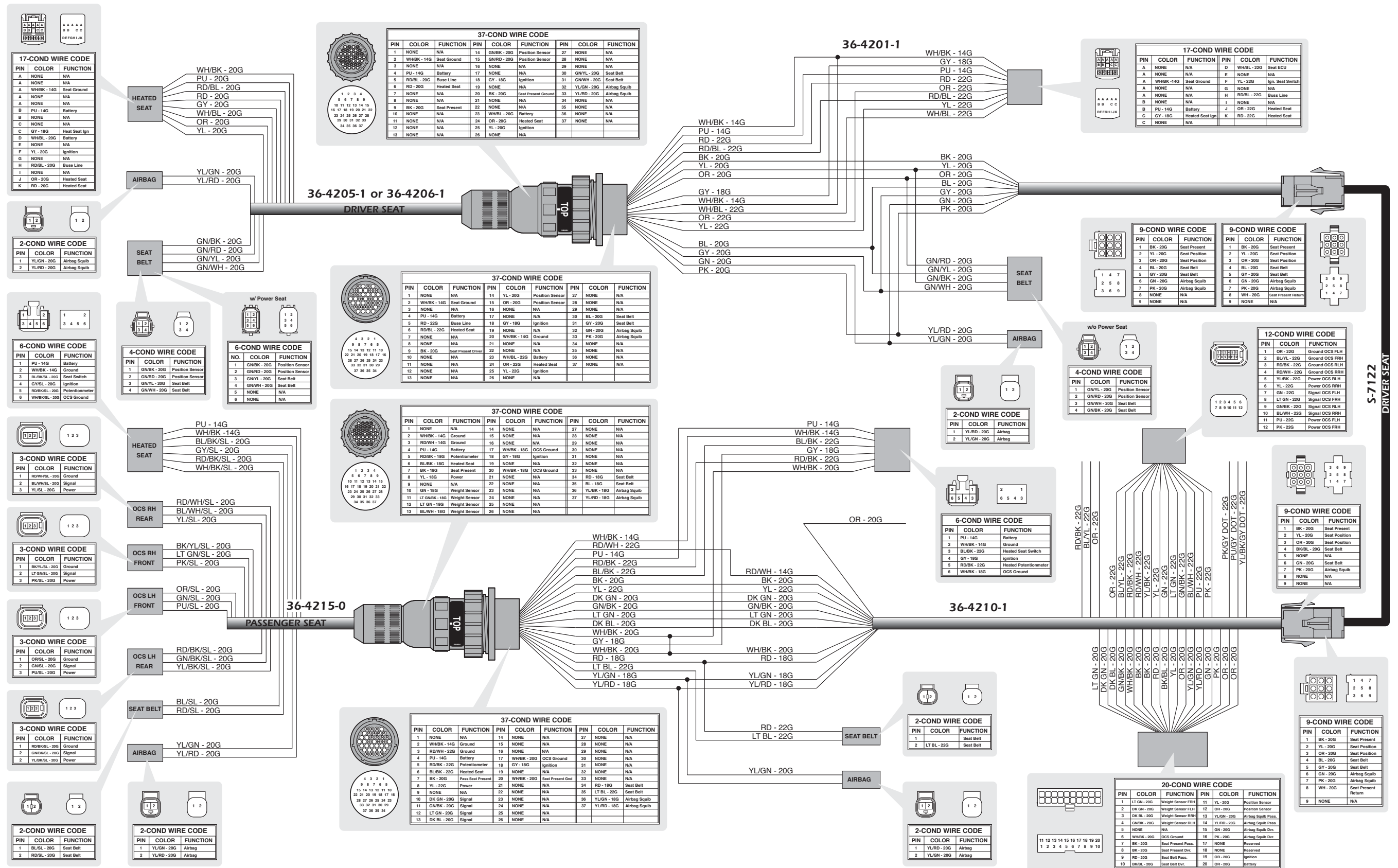
2007 Power Door, Foldout Ramp and Kneel Electrical Schematic



DRAWING NOTES

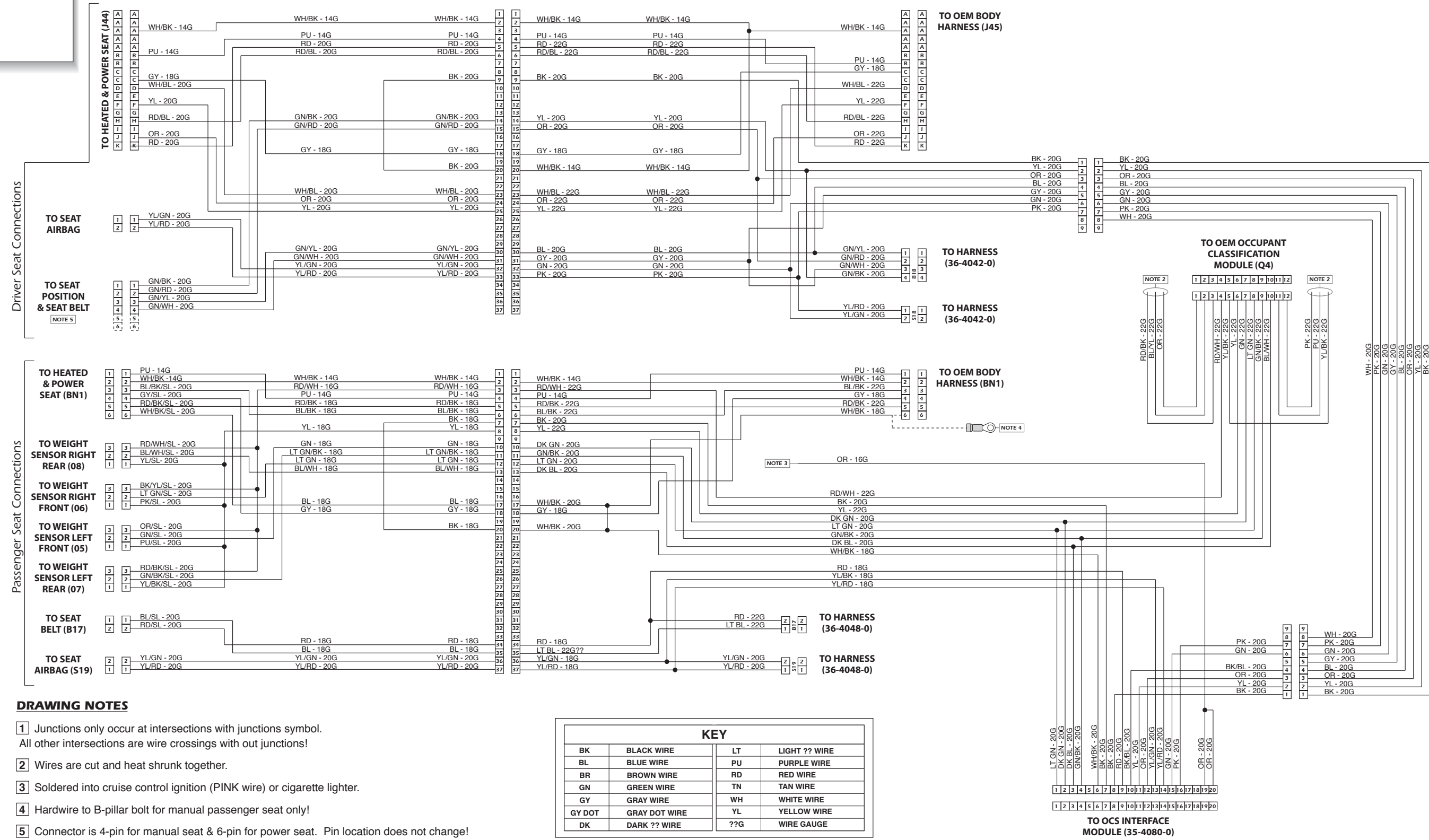
Junctions only occur at intersections with junctions symbol.
All other intersections are wire crossings **with out** junctions!

DESCRIPTION	SYMBOL	DESCRIPTION	SYMBOL
CONNECTORS (P-Plug & J-Jack)		NC SWITCH	
BATTERY		NO SWITCH	
JUNCTION		MOMENTARY SWITCH	
CHASSIS GROUND		MOMENTARY SWITCH	
FUSE		RELAY	
MOTOR			

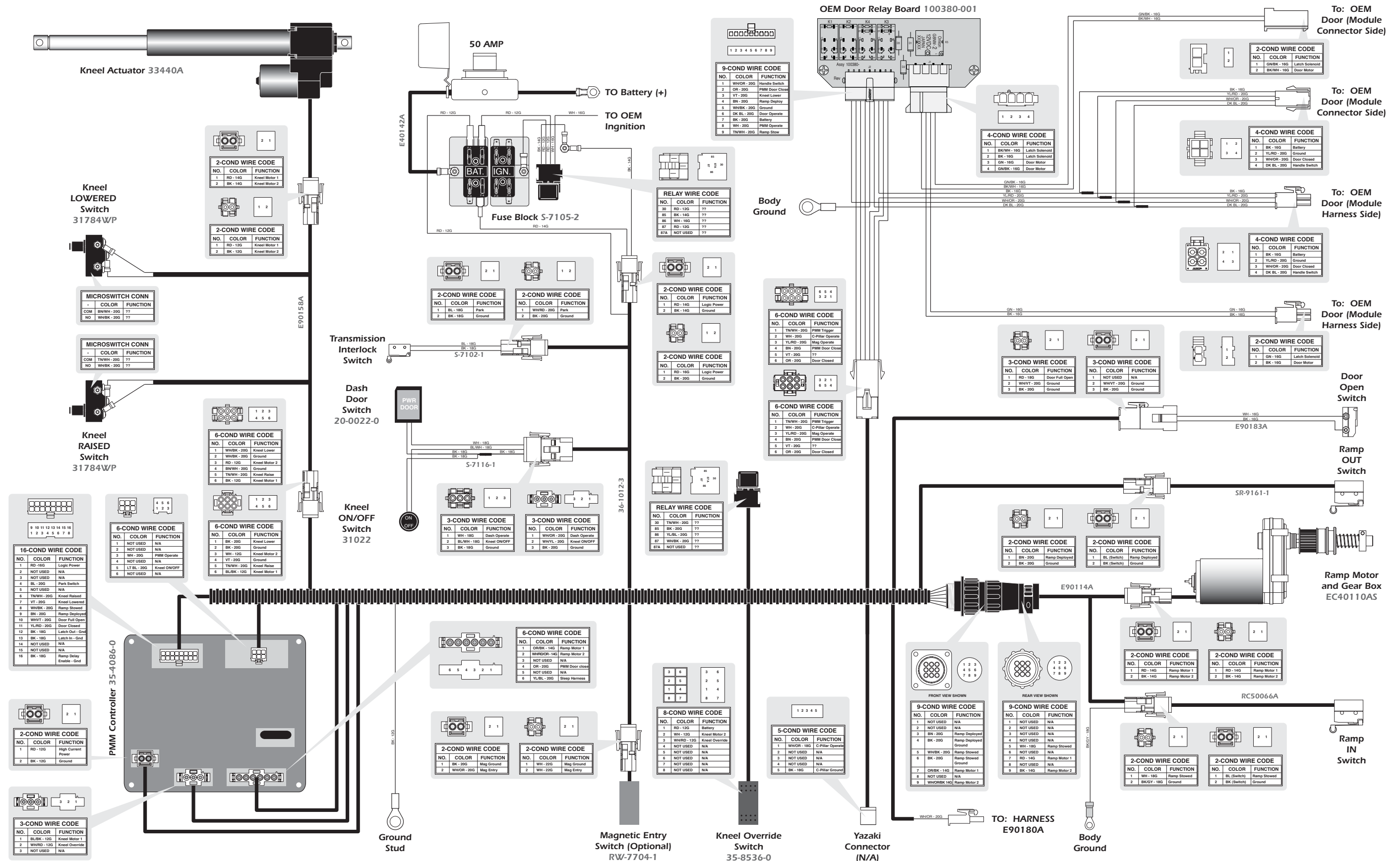


Unfold for:
2007 Seat and
Airbag Wiring Diagram

2007 Seat and Airbag Electrical Schematic



2008 - 2010 Power Door, Infloor Ramp and Kneel Wiring Diagram



General Specifications - Foldout and Infloor Rampvans®

The following specifications are basic to the Toyota Rampvan® conversion (as equipped):

- Power source is 12 Volt DC battery with negative ground.
- Electronic System Controller for power door and power ramp.
 - Obstruction Sensing
- Electromechanical Kneeling System incorporating:
 - Heavy-duty weatherproof linear actuator with manual override
 - Industrial four-leaf roller chain
 - Electrical Override
 - Mechanical Override

Vehicle Weights - Foldout and Infloor Rampvans®

Vehicle Description	Vehicle Weight
OEM Toyota Sienna LE	4270 Pounds
OEM Toyota Sienna XLE	4266 Pounds
OEM Toyota Sienna Limited	4266 Pounds
Toyota Sienna Infloor Rampvan®	4532 Pounds
Toyota Sienna Fold Out Rampvan®	4452 Pounds

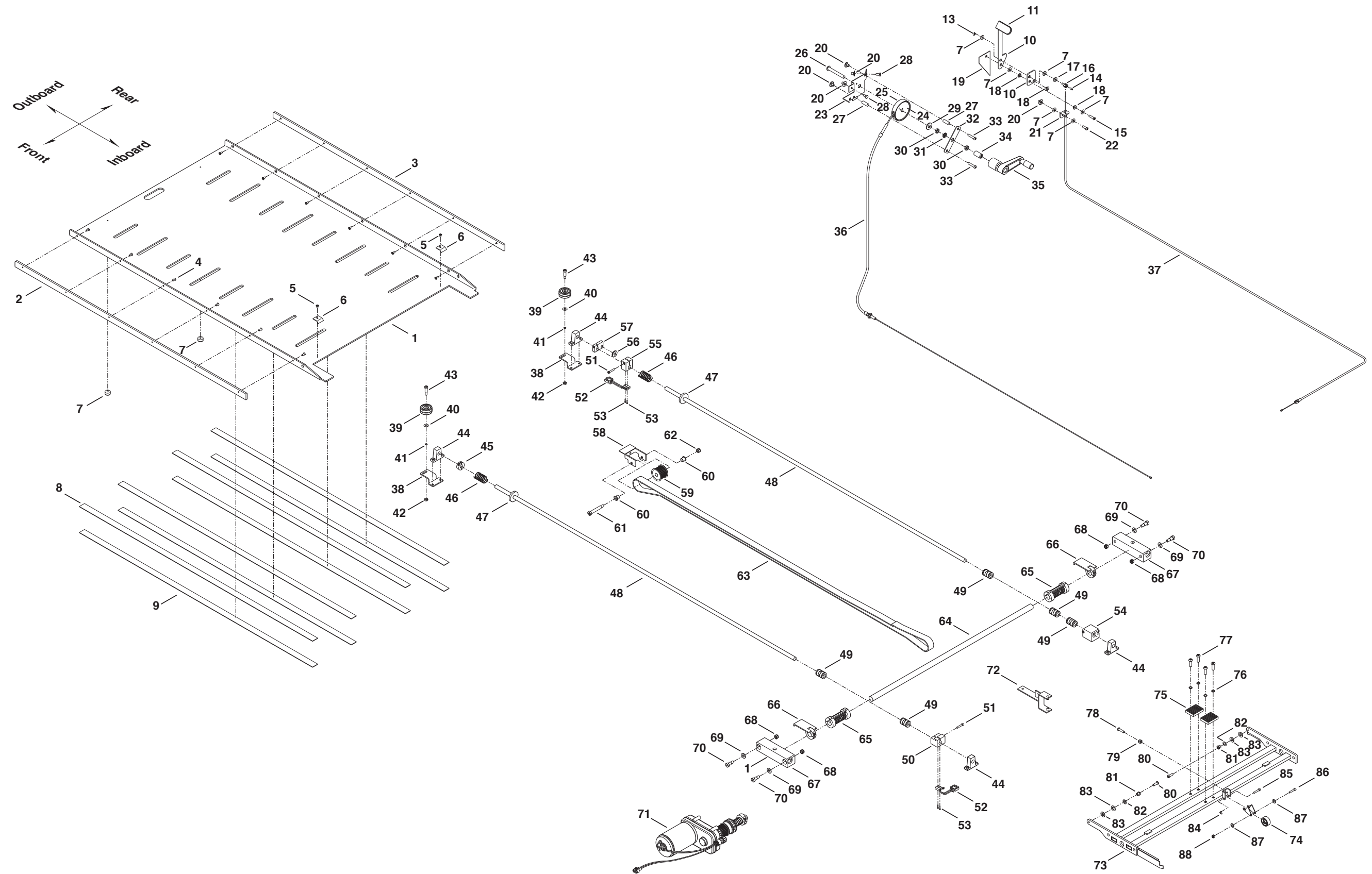
Operation Cycle Times - Foldout and Infloor Rampvans®

Operation Cycle Times	Fold Out Rampvan®	Infloor Rampvan®
Kneel (Down) Actuator Run Time	18.5 Seconds	18.5 Seconds
Kneel (Down) Time only	8.5 Seconds	8.5 Seconds
Kneel (Up) Actuator Run Time	17 Seconds	17 Seconds
Kneel (Up) Time only	6.5 Seconds	6.5 Seconds
Door Open Time	5.5 Seconds	5.5 Seconds
Ramp Motor Run Time (Deploy)	4 Seconds	5.5 Seconds
Ramp Deploy Time (Total)	4.8 Seconds	5.5 Seconds
Ramp Stow Time	5.7 Seconds	5 Seconds
Door Close Time	6 Seconds	6 Seconds

REPLACEMENT PARTS

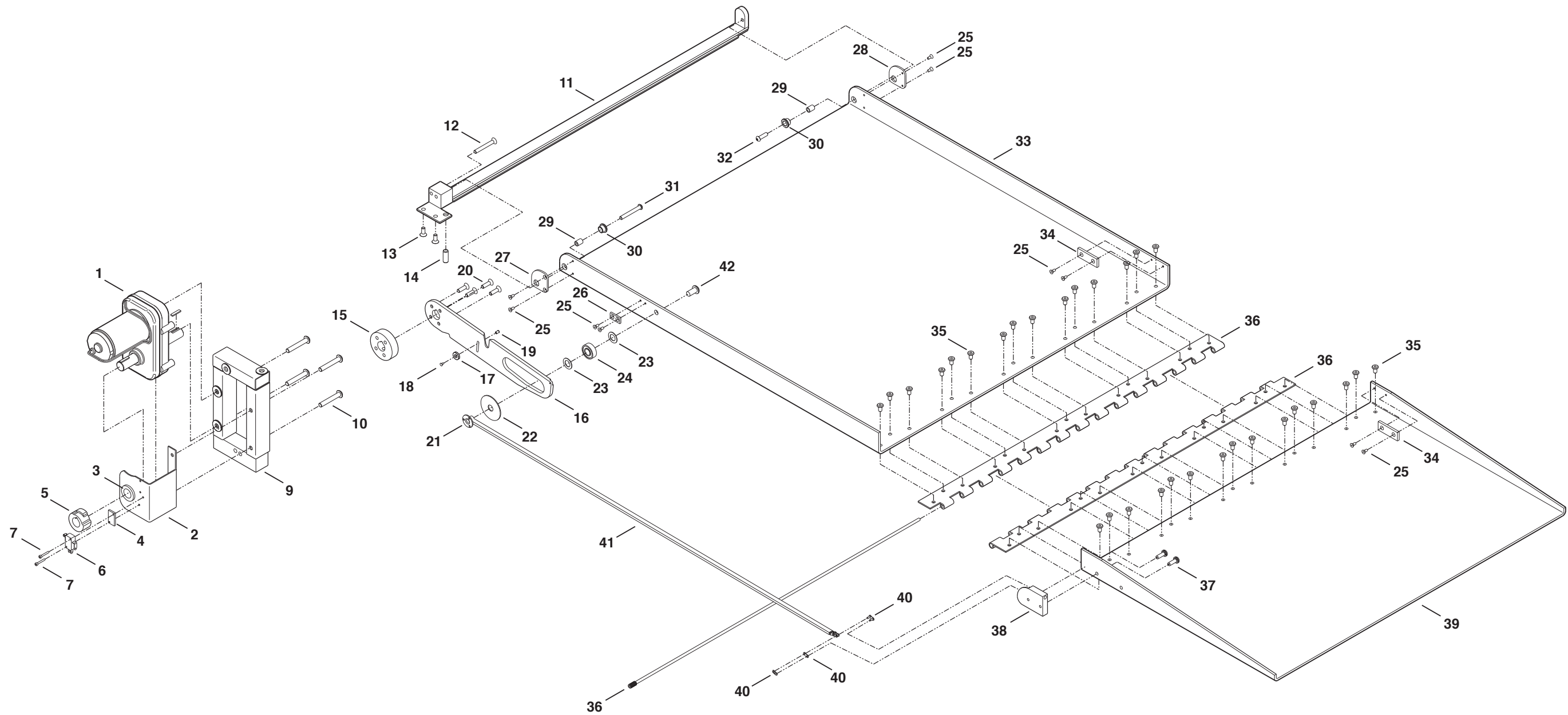
Infloor Ramp

Item	Qty.	Description	Part Number	Item	Qty.	Description	Part Number
1	1	05 Infloor Ramp	RC50032??	45	1	Collar-One PC Clamp-3/4 ID-1 1/2 OD	EC40130
2	1	Infloor Ramp Side Stiffener-Front	RC50033??	46	2	Switch-15 lb/in Compression Spring	73-7611-0
3	1	Infloor Ramp Side Stiffener-Rear	RC50034??	47	3	Washer-Felt 1-1/2" ODx 1/2" ID .25 Thick	61-4023-
4	12	Screw-10-32 x 7/16, Infloor Ramp	40-8065-0	48	2	Thomson Shaft-1/2" Infloor Ramp	61-4010-0
5	2	Screw-#10-32 x 1/4" BHCS	28455	49	5	Super Smart Ball Bearing Bushing	13-1070-0
6	2	Wear Plate-Ramp Platform/Toyota	EC90031	50	1	Infloor IN Switch Bracket	SR-9290
7	2	Bumper-Rubber-Threaded-8-32	61-6640-0	51	2	Screw-10-32 x 1" SHCS	40-1090-0
8	4	Tape-Double Sided/3M 1/2 "45 ML Thick	81-2010-0	52	2	Switch-Cherry Limit-Sealed-DC2C-A4RC	35-8419-0
9	4	Nylon Strip-Black MDS 1" Wide .0316	61-4028-0	53	4	Screw-#2-56 x 1/2 RD HD SS	17961
10	1	Man. Release Clutch Arm Reinforcement	S-9190	54	1	Block-Manual Release CMM Cable	SR-9318
11	1	Cap-.125 x 1" x 5" Vinyl-Infloor/Yellow	47-4041-0	55	1	Infloor OUT Switch Bracket	SR-9289
12	6	Washer-Flat 218-020 SS	41-9690-0	56	1	Washer-5/16 Flat	10063
13	1	Cotter Pin-1/16" x 3/4"	41-4204-0	57	1	Emergency Crank Cable Bracket	SR-9285
14	1	Screw-10-32 x 3/8 Set	84015-000	58	1	Adjuster Driven Pulley	SR-9221
15	1	Screw-BHSC 6mm-1.0 x 25mm SS	40-2892-0	59	1	Pulley-Driven	SR-9251
16	1	Cable Terminal- Brass #10-32 Fitting	15-1049-0	60	2	Bushing-Bronze Flange-3/8" ID, 1/2" OD	EC40135
17	1	Bearing-Thrust 1/4" ID	13-3026-0	61	1	Bolt-Shoulder/3/8" DIA. x 2"	40-1080-0
18	3	Bushing-Flange 1/4" ID x 3/16 L.	13-3005-0	62	1	Nut-5/16-18 Hex Lock	11387
19	1	Stiffener-Ramp Disengage Lever/Infloor	S-9355	63	1	Belt-Flexible/Infloor/Beltdrive x 114"	EC40111R114
20	5	Nut-Weld-1/4-20x3/4ODx1/2x5/16 H/SS	30865	64	1	Torsion Shaft	SR-9203
21	1	Emergency Clutch Cable Brkt	R-9286	65	2	Torsion Spring Assy.	SR-9120
22	1	Screw-1/4-20 x 3/4" BHSCS 18-8 SS	81068-000	66	2	Shaft Flapper Assy.	SR-9115
23	1	Housing-Manual Release Toyota	S-9322	67	2	Linear Bearing Block/Blk. Delrin Plastic	RC50210
24	1	Pulley-Manual Release	SR-9310	68	4	Nut-5/16-18 Nylock Plated	25639
25	1	Ring-Cable Guide	R-9305	69	4	Bearing-Thrust 3/8Shftx1/16Thk,INFR	61-4030-0
26	1	Screw-Socket/Button Head 3/8"-16 x 3" ZI	40-2978-0	70	4	Bolt-Shoulder 3/8 x 5/8 LG	40-1081-0
27	2	Standoff-Manual Release-IFR	S-9325	71	1	Assy-Gearmotor/Infloor/Beltdrive	EC40110A
28	2	Bolt-1/4-20 x 1/2 Hex	10000	72	1	Clutch Release Actuator-Sub. Assembly	SR-9141
29	1	Washer-3/8" Flat/Auto-Bk	10064	73	1	Carrier Sub Assembly	RC50188W
30	2	Nut-3/8-16 Jam	12464	74	1	Roller	RC50068
31	1	Bushing-Bronze .377 x 503 x.25	13-1015-0	75	2	Belt Clamp-Modified	SR-9260
32	1	Retainer-Manual Release Pulley	S-9321	76	4	Washer-5/16" External Tooth	16368
33	2	Bolt-1/4-20 x 1 1/4" BHSC Gr 8	28276	77	4	Screw-5/16"-18 x 1" BHCS	40-2900-0
34	1	Adaptor/E-Release Infloor	SR-9352	78	1	Bolt-1/4-20 x 1 1/2 SHCS	32032
35	1	Assy-IFR E-Release Crank Handle	RC50228A	79	1	Nut-1/4-20 Hex	10057
36	1	E-Release Manual Crank Cable Assy.	S-9185	80	2	Screw-1/4-20 x 3/4 BHSCS 18-8 SS	81068-000
37	1	Cable Assembly w/Sheath	15-9950-0	81	2	Bushing - Bronze Flange-1/4" ID, 3/8" OD	30293
38	2	Bracket-Ramp Roller	S-9343	82	2	Shim-3/8" ID x .031"Thk, Infloor Ramp	40-1085-0
39	2	Wheel-Cushion Tread Rubber-Infloor	61-4018-0	83	4	Bearing-Thrust 3/8Shft x 1/16 Thk,INFR	61-4030-0
40	2	Washer-Flat 218-020 SS	41-9690-0	84	1	Pin-Cotter 1/16 x 3/4 (AU)	13713
41	2	Shim-SS .015 Thick .234 ID .303 OD	40-8706-0	85	1	Pin-Clevis 3/16 x 1 1/4" Steel	32039
42	2	Nut-Stover 1/4"-20 USS	40-2025-0	86	1	Screw-10-32 x 1.25" SHCS	40-1092-0
43	2	Bolt-Shldr. 312 .75 1/4-20 SKT	18073	87	2	Washer-#10 Flat/Auto Bk	11541
44	4	Shaft Support Block-Infloor Ramp	61-4015-0	88	1	Nut-Hex 10-32 Nylock	40-2509-0



Unfold for:
Infloor Ramp
Exploded View

Pre-2007 Foldout Ramp Exploded View



REPLACEMENT PARTS

Pre-2007 Foldout Ramp

Item	Qty.	Description	Part Number
1	1	Ramp Motor-Sqr-w/Harness-Toy & RS Chrys	RW-5191
2	1	Switch Holder Assy-Small Motor	RW-5161
3	1	Bushing-Flange-3/4" ID/IGUS	EC40134
4	1	Spacer-Cam Limit Switch	RW-5647
5	1	Cam-Limit Switch	59-0050-0
6	1	Switch-Lever Limit D44L-R1RA	35-8425-0
7	2	Screw-Cap M3-20MM	41-8630-0
8*	2	Locknut-M3 Nylock ZP	27432
9	1	Tower Assembly, Power Sienna	S-5181??
10	4	Screw-5/16-18 x 2" BHSC 316SS	40-2898-0
11	1	Ramp Strap Assembly	R-5189??
12	1	Screw-FHSC 1/4-20 x 2"	40-4259-0
13	2	Screw-1/4"-20 x 5/8" FHSC	40-4230-0
14	1	Pin-Dowel 3/8 x 1-1/4"	41-4310-0
15	1	Shaft Reinforcement	RW-5623
16	1	Arm-Pickup (Grayco)	SR-5707??
17	1	Switch-Magnetic R1125WN-W Magnet	35-8433-0
18	1	Screw-FHSC #4-40 x 1/4" Switch Magnet	40-4107-0
19	1	Standoff-#4-40 x 1/4" Threaded	40-2641-0
20	4	Screw-1/4"-20 x 7/8" FHSC Stainless	40-4246-0
21	1	Nut-Weld-3/8"-16 Round	41-3750-0
22	1	Washer-1/2 Large OD SS	41-9660-0
23	2	Washer-S.S. .516 ID x .875 OD	40-9140-0
24	1	Bearing-1/2ID x 1 1/8 OD-Ball	21371
25	10	Flathead Socket Cap #8-32 x .375	40-4109-0
26	1	Pickup Arm Plastic Spacer	RW-5621
27	1	Swivel Bracket/Left	RW-5619
28	1	Swivel Bracket/Right	RW-5620
29	2	Spacer-Aluminum Ramp Platform	41-8795-0
30	2	Bushing-Bronze FB6-8-3	13-1010-0
31	1	Screw-BHCS Stainless 1/4-20 x 2"	40-2841-0
32	1	Screw-BHCS Stainless 1/4-20 x 7/8"	40-2836-0
33	1	Body, Lower Ramp 2001	RW-5709
34	2	Butt Plate	RW-5710
35	30	Rivet-Ramp Stap 1/4" #8-4 Black	41-7025-0
36	1	Hinge	SR-5626
37	2	Screw-1/4-20 x 3/4 BHSCS 18-8 SS	81068-000
38	1	Chain-Flap Actuator 2002	RW-5712
39	1	Body, Upper Ramp Platform 2001	RW-5711
40	2	Link-Chain #25 Plated/Nickle	25156
41	1	Ramp Chain and Heat Shrink	RW-5713
42	1	Bolt-3/8-16 x 3/4 BHCS SS	81060-000

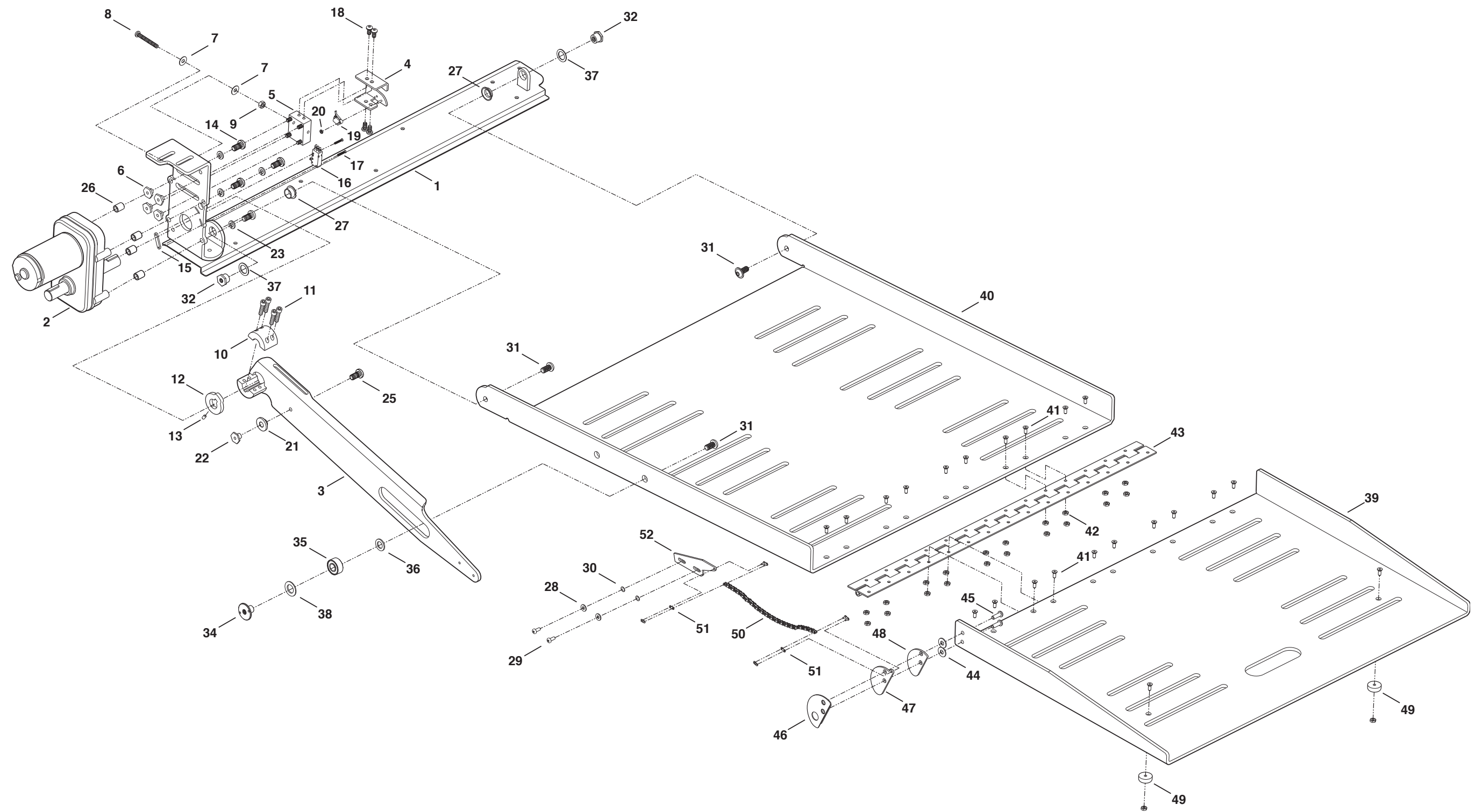
* Item not shown

REPLACEMENT PARTS

2007 Foldout Ramp

Item	Qty.	Description	Part Number
1	1	Wmt-Main Ramp Housing	E90108W??
2	1	Motor-Ramp Assy/KLauber/IMS	RF50068A
3	1	Arm-Drives Ramp-Gear Mtr	E40268W-06BK
4	1	Support-Gear Motor/Folding Ramp	E40479BK
5	1	Stow Switch Slider	E40481
6	4	Nut-Shoulder 3/4" Hex/0.27 H	32385
7	2	Washer-Nylon 1/4IDx11/16x.030	12690
8	1	Screw-1/4-20 x 3" BHSC	29171
9	1	Nut-1/4-20 Hex Lock/Auto-Bk	10775
10	1	Collar-Split-3/4" Shaft/Rmp Mtr/Inner/Bk	52565-2905BK
11	4	Screw-1/4-20 x 1" Soc HD Cap	24221
12	1	Cam-Micro-Switch Adjust-EV	52573-2905
13	1	Screw-#10-32 x 5/16" Set/Auto-Bk	11562
14	4	Bolt-5/16-18 x 3/4-BHSC/Auto-Bk	24440
15	1	Plate-Tapped #4-40 Micro Switch	24998
16	1	Micro Switch-Fir Lvl/Cupped	23184
17	2	Screw-#4-40 x 3/4" Rd. Hd./Auto-Bk	11483
18	4	Bolt-1/4-20 x 1/2 But HD Soc/Auto-Bk	15733
19	1	Assy-Switch-Sealed-Long Lever	33421A
20	1	Nut-#4-40 w/Lockwasher/Auto-Bk	19537
21	1	Pin-Ramp Support-96SC 29" Ramp	51815-2905
22	1	Latch Bolt-Support-29" Ramp	51541-2905
23	4	Washer-5/16" Lock/Auto-Bk	10068
24*	.002	Loctite-Blue/#242 Gen Purpose	18822
25	1	Bolt-1/4-20x3/4" BHCS NYLK/BKZN	25371
26	4	Spacer-.500" O.D. x .328" I.D. x .625" Long	E90121
27	2	Bearing-Flange-5/8" x 1/4"-10FDU04	28435
28	2	Washer-#10 Flat	11541
29	2	Screw-#10-32x1/2 But.HD-HX SK	17193
30	2	Washer-#10 Internal Tooth	11540
31	3	Bolt-3/8-16 x 3/4" FLBHSCS-GD8	25171
32	2	Pivot Pin/Bushing/EV Ramp/2905	52571-2905
33*	1	Harness-Ramp EXT/96A8	52038A-96A8
34	1	Retainer-Bearing	21451-03
35	1	Bearing-1/2ID x 1 1/8OD-Ball	21371
36	1	Washer-.519ID x .876OD x .074	12621
37	2	Washer-.63 x .8 x .06 Nylon{10	83584
38	1	Washer-UHMW 1.500 OD x .76 ID x 0.062	29680
39	1	Ramp-Extension/29.25" Auto/2004 Chrysler	E50262??-05
40	1	Ramp-Base/29.25" Auto/Toyota	E90111???
41	22	Screw-#10-32x1/2 FL HD-HX SKT	17192P
42	22	Nut-#10-32 w/Lockwasher ZC PL	18349
43	1	Hinge-S.S. 2" x 1/4" x 29"	18619W029
44	2	Washer-1/4" Flat	10062
45	2	Bolt-1/4-20 x 1" But HD Soc	25954
46	1	Cam-Fold-Wmt.-Ramp Ext.-O/S	52570W2906
47	1	Cam-Fold-Ramp Ext.-Center	52569-2906
48	1	Cam-Fold-Ramp Ext.-O/S	52567-2906
49	2	Bumper-Rubber Reces.31/32 OD	10950
50	1	Chain-Nickel Plated #35 Roller x 9.38	84314R009.38
51	2	Link-Chain #35	12454
52	1	Bracket-Cable Tensioner/Outer/Black	52568-2906BK

* Item not shown



Unfold for:
2007 Foldout Ramp
 Exploded View

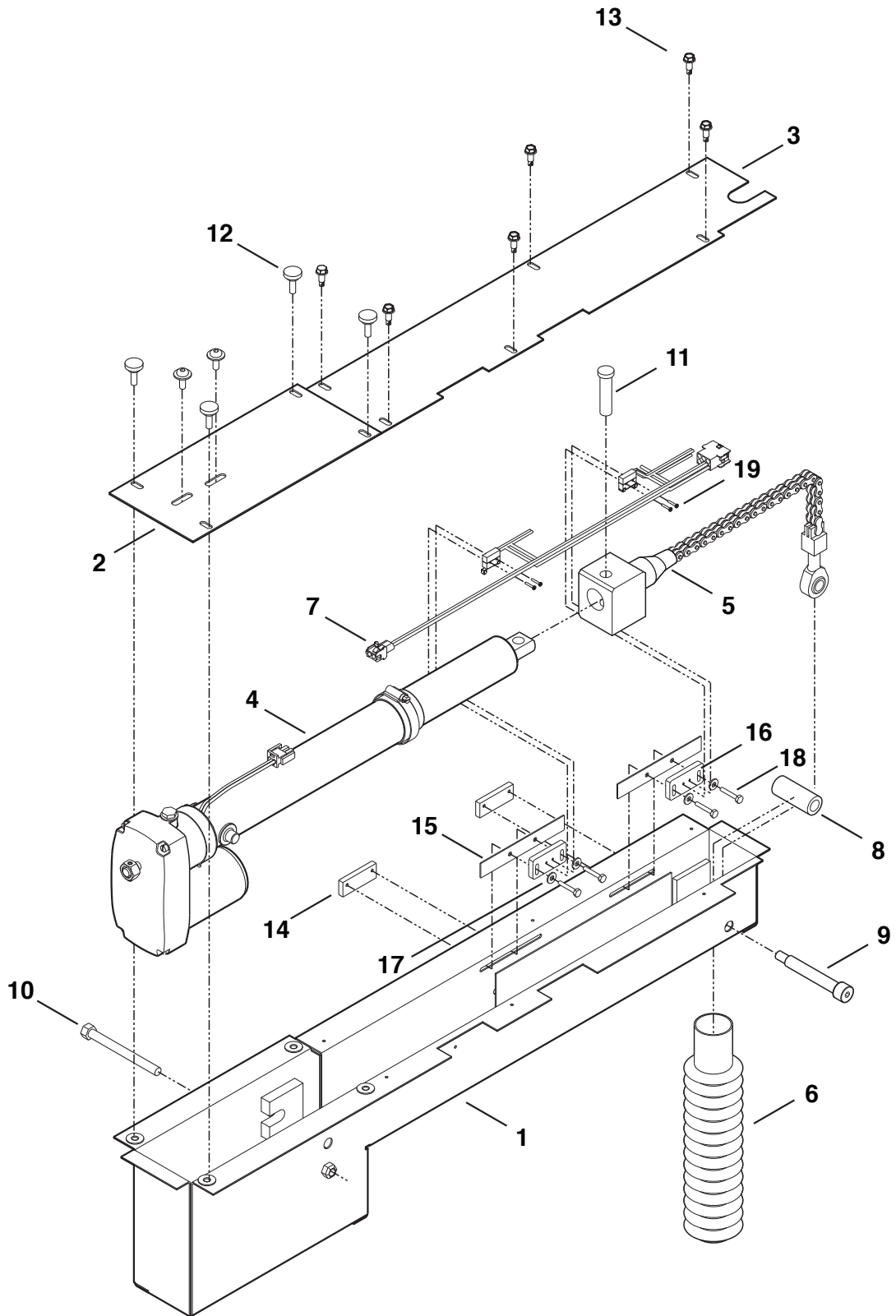
REPLACEMENT PARTS

Pre-2007 Kneel Assembly

Item	Qty.	Description	Part Number
1	1	Kneel Box Assembly	S-6115
2	1	Cover - Assembly Kneel Box Rear	S-6102
3	1	Kneel Box Front Top	S-6228
4	1	Kneel Actuator Assembly	RC50107A
5	1	Block - Aluminum Chain Assembly	S-6110
6	1	Bellow - Chain 1-1/2 ID x 1-5/8 OD	47-0500-0
7	1	Harness-Kneel SW. Wire Sub-Assy.	S-6104
8	1	Pulley - Kneel Chain .875 CRS	S-6234
9	1	Bolt - Shoulder 5/16"-18 Thread 3/8" x 3"	40-1071-0
10	1	Bolt - 3/8-16 x 4" Hex HD. Cap	10031
11	1	Pin - Clevis 1/2 x 2"	41-4070-0
12	4	Screw - Knurled Head Thumb 1/4-20 x 3/4	40-7100-0
13	6	Screw - 1/4-14 x 3/4 Slf - Wshr - Lag	20581
14	2	Plate - Backing Kneel Switch	S-6227
15	2	Plate - Seal Kneel Switch Adjust	S-6238
16	2	Block - Slider Kneel Switch	RC50263
17	4	Washer - #8 Tooth	78018
18	4	Screw - Hex Head 8-32 x 1"	40-4112-0
19	4	Screw - #2-56 x 1/2 Rd Hd SS	17961

REPLACEMENT PARTS

Pre-2007 Kneel Assembly



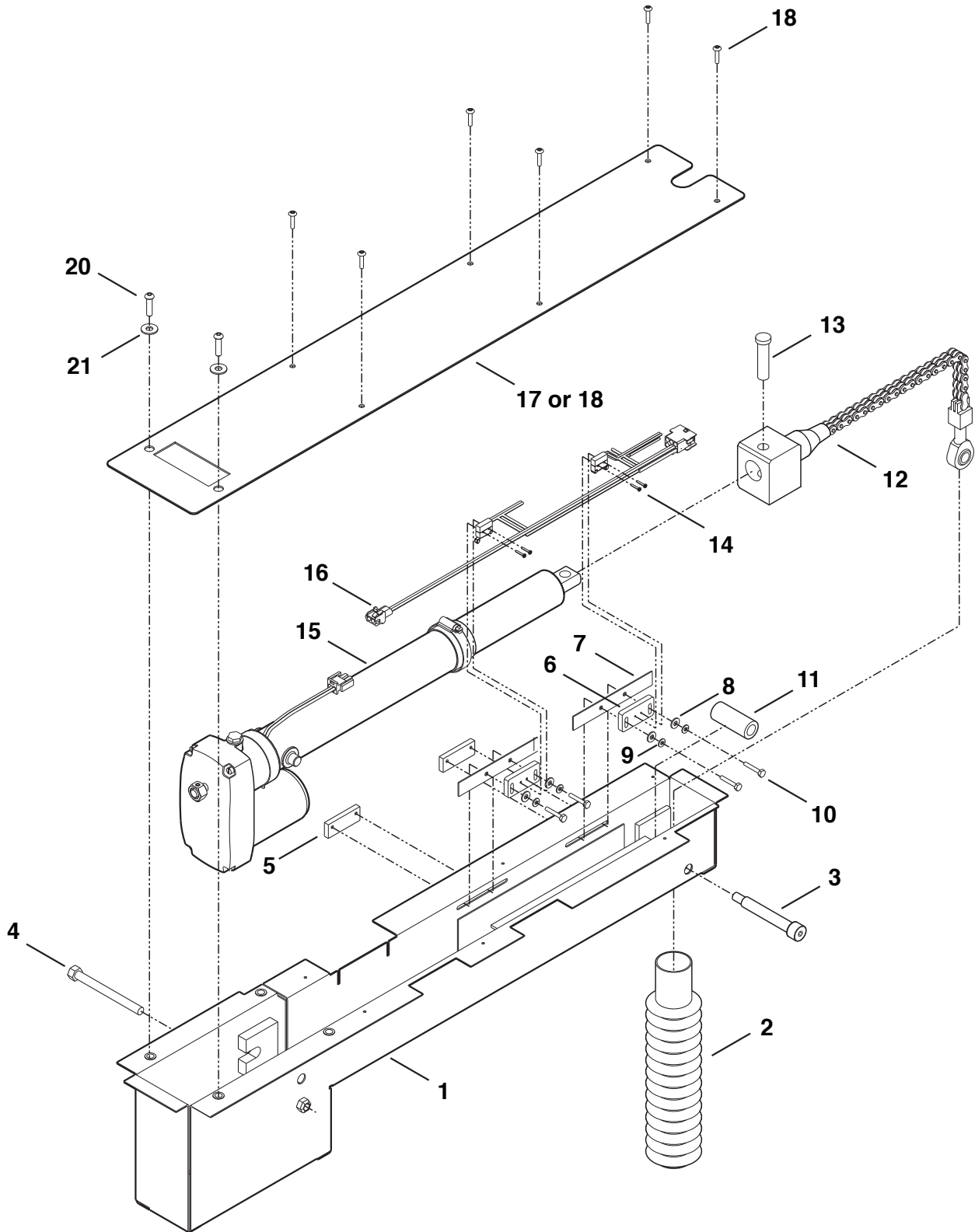
REPLACEMENT PARTS

2007 Kneel Assembly

Item	Qty.	Description	Part Number
1	1	05 RS Kneel Master	RC50260A
2	1	Bellow- Chain 1-1/2 ID x 1-5/8 OD	47-0500-0
3	1	Bolt-Shoulder 1/2" x 3"	40-1071-0
4	1	Bolt-3/8-16 x 4" Hex HD. Cap	10031
5	2	Plate-Backing Kneel Switch	RC50264
6	2	Block-Slider Kneel Switch	RC50263
7	2	Plate-Seal Kneel Switch Adjust	RC50262
8	4	Washer-#10 Flat/Auto-Bk	11541
9	4	Washer-#8 Split Lock	11495
10	4	Screw-Hex Head 8-32 x 1"	40-4112-0
11	1	Pulley-Kneel Chain .875 CRS	RC50265
12	1	Block - Aluminum Chain Assembly	S-6110
13	1	Pin-Clevis 1/2 x 2"	41-4070-0
14	4	Screw-#2-56 x 1/2 RD HD SS	17961
15	1	Kneel Actuator Assembly	RC50107A
16	1	Harness-Kneel SW. Wire Sub-Assy.	S-6104
17	1	Toyota Kneel Cover - Dark Khaki	E90105DK
18	1	Toyota Kneel Cover - Medium Slate	E90105MS
19	6	Screw-1/4-14 x 1 SD-Hex Wshr-Lag	14145
20	2	Bolt-1/4-20 x 3/4" FLBHSCS Gr 8	29326ZP
21	2	Washer-1/4" Flat Auto Black	10062

REPLACEMENT PARTS

2007 Kneel Assembly



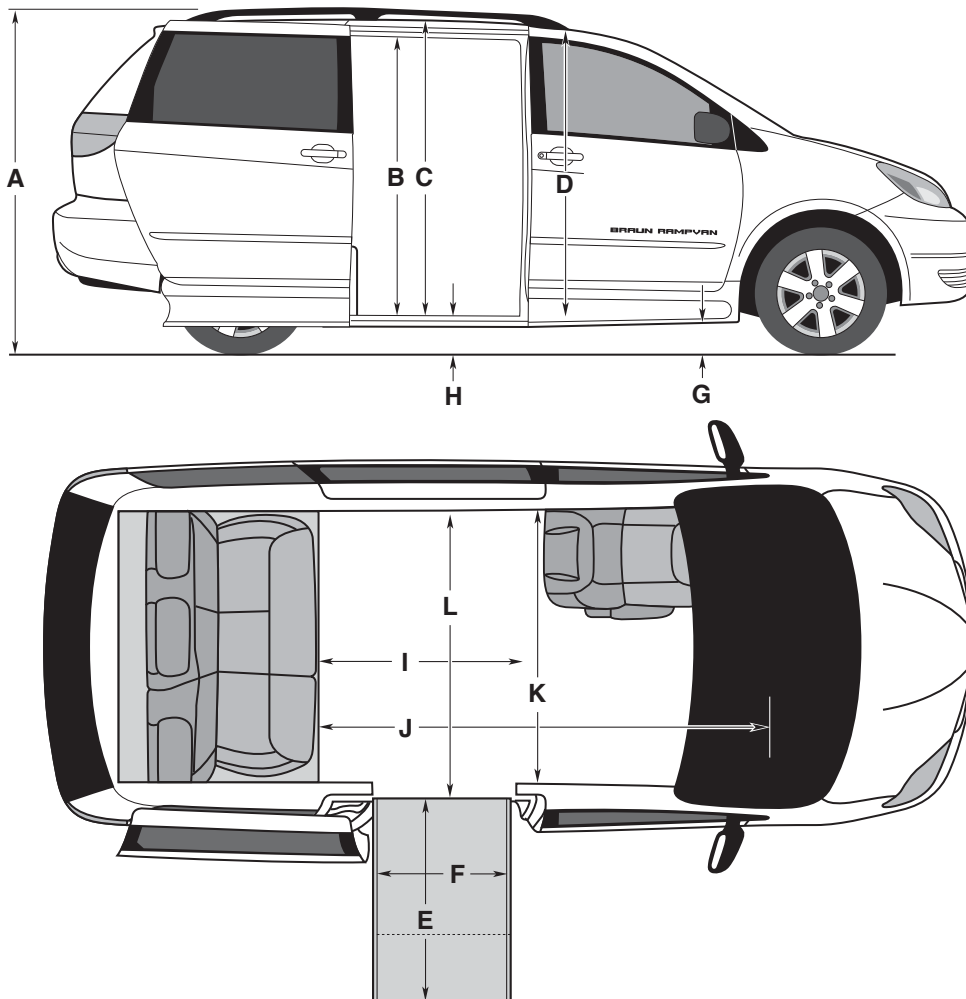
DIMENSIONS

Dimensions - Foldout and Infloor Rampvans®

		Foldout	Infloor
Overall Height	A	70"	70"
Door Opening Usable Height	B	54-1/4"	53-1/2"
Interior Height (Center of Van) ¹	C	59"	58"
Interior Height (Driver/Passenger) ²	D	57"	56-1/4"
Ramp Length	E	53"	52-3/4"
Useable Ramp Width	F	29-1/2"	30"
Ground Clearance	G	6-1/4"	6"
Floor Height at Door	H	11-1/2"	12-1/2"
Center Floor Length	I	47"	47"
Useable Floor Length (Flat Area)	J	82"	82"
Floor Width at B Pillars	K	62"	62"
Interior Width (At Ramp)	L	69"	69"

¹ Interior height dimension is reduced by 3" at this position if equipped with a moon roof.

² Interior height dimension is reduced by 1" at this position if equipped with a moon roof.



"Providing Access to the World"®



**Over 300 Braun
Dealers Worldwide**

 **THE BRAUN
CORPORATION®**
"Providing Access to the World"



International Corporate Hdqrs: P.O. Box 310 Winamac, IN 46996 USA
1-800-THE LIFT® (574) 946-6153 FAX: (574) 946-4670



Because Life is a Moving Experience®

33446 Rev B
February 2011

Patent #6,825,628
Patent #7,798,761



International Corporate Hdqrs: P.O. Box 310 Winamac, IN 46996 USA
1-800-THE LIFT® (574) 946-6153 FAX: (574) 946-4670
braunmobility.com™ entervan.com™

All illustrations, descriptions and specifications in this manual are based on the latest product information available at the time of publication. The Braun Corporation reserves the right to make changes at any time without notice.

Braun Rampvan®
featuring Toyota Minivans